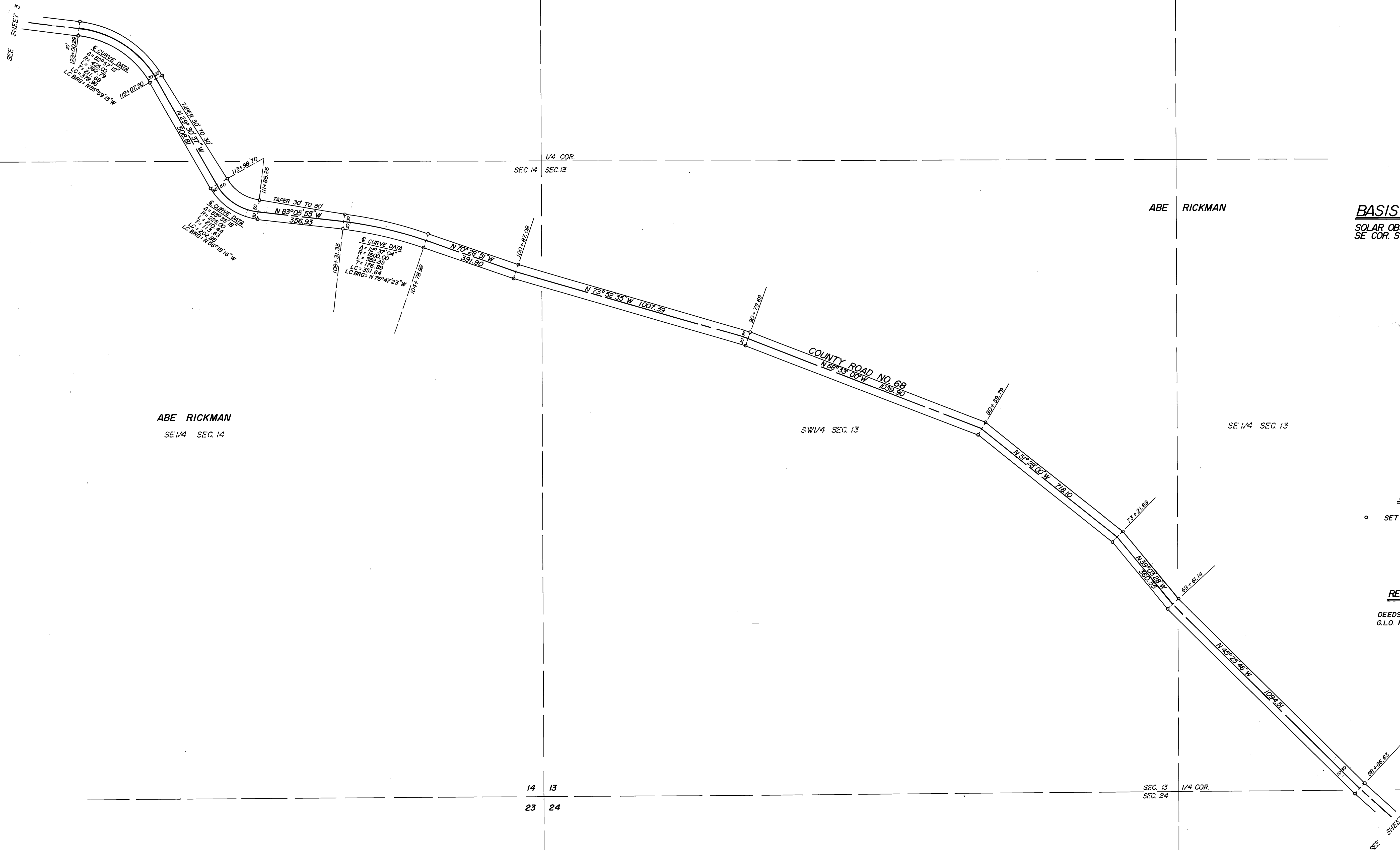


ABE RICKMAN



BASIS OF BEARINGS
SOLAR OBSERVATION AT THE
SE COR. SEC. 24, T. 18S, R. 28E, W.M.

LEGEND

○ SET 5/8" x 30" IRON PIN

REFERENCES

DEEDS BOOK 83 PAGE 101
G.L.O. FIELD NOTES

BAGETT, GRIFFITH & ASSOCIATES

John Day, Oregon

Map of Survey

COUNTY ROAD NO. 68
SITUATED IN SECTIONS 24, 13, 14, 15 & 10
T. 18S, R. 28E, W.M.

GRANT COUNTY, OREGON

SURVEYED FOR GRANT COUNTY ROAD DEPARTMENT

SURVEYED BY R.D.B. & G.L.E. 3/25-4/15/80

Scale: 1" = 200' Drawn by: G.L.E. 4/16-4/18/80