

SURVEYOR'S CERTIFICATE:

I, GARY W. HICKMAN, REGISTERED PROFESSIONAL LAND SURVEYOR NO. 1678 IN THE STATE OF OREGON, HEREBY CERTIFY THAT THIS PLAT AND THE NOTES HEREON ARE A CORRECT REPRESENTATION OF THE SURVEY CENTURY WEST ENGINEERING CORPORATION PERFORMED DURING MAY THROUGH JULY OF 1979 FOR THE U.S. FOREST SERVICE IN ACCORDANCE WITH THE STATUTES OF THE STATE OF OREGON AND THE B.L.M. MANUAL OF SURVEYING INSTRUCTIONS, 1973 ADDITION.

BY GARY W. HICKMAN P.L.S. 1678

LEGEND

- ===== POSTED LINE THIS SURVEY
() 1874 G.L.O. BY GESNER, 1874 Cont. #200.
(") 1959 B.L.M. SURVEY BY WHITE
(M) indicates meters (Using 3280840 ft = 1 meter)

GENERAL NOTES:

- PERSONNEL:
A. PROJECT MANAGER - GARY W. HICKMAN P.L.S. 1678
B. CHIEF OF PARTIES - RON KING
C. PARTY CHIEF - STEVE MILLER
D. PARTY CHIEF - PAUL MORGAN
E. INSTRUMENTMAN - STEVE CARTRIGHT
F. INSTRUMENTMAN - RICK LATEL
G. CALCULATIONS - MIKE TOMPKINS
H. DRAFTING - NICK OATMAN
- INSTRUMENTATION:
A. DISTANCES - MAC 1-H DISTANCE METER
B. ANGULATION - WILD T-16 THEODOLITE
C. CALCULATIONS - WANG 2200 SYSTEM WITH PLOTTER
- FIELD NOTES FOR THIS SURVEY ARE ON FILE AT THE SUPERVISOR'S OFFICE OF THE OCHOCO NATIONAL FOREST, PRINEVILLE OREGON.
- ALL MONUMENTS SET DURING THIS SURVEY ARE THE STANDARD 3" ALUMINUM CAP ON A 2 1/2" ALUMINUM PIPE "BREAKAWAY" WITH A MAGNET IN THE BOTTOM.
- ALL BEARINGS FOR THIS SURVEY ARE BASED UPON S 88 49 00 E BETWEEN MONUMENTS 1 AND 12 AS ESTABLISHED BY THE B.L.M. IN 1959.
- THE MEAN MAGNETIC DECLINATION FOR THIS SURVEY IS 19 AND 1/2 DEGREES EAST.
- ALL BEARINGS TREES SCRIBED DURING THIS SURVEY HAVE A BRASS WASHER MARKED P.L.S. 1678 AND A STANDARD FOREST SERVICE SIGN #54-3 ATTACHED.

FOUND MONUMENTS

CAP MED.
T16S R26E
1/4 S 35
8 L.M.

- #1 FOUND 3" BRASS CAP WITH 2 1/2" IRON PIPE PROTRUDING 2" ABOVE GROUND IN 4' DIAM. M.O.R. 1 1/2' FROM BASE TO TOP, FROM WHICH:
A 8" PINE BEARS N. 56° W. 76.60 FEET WITH HEALED BLAZE.
A 14" PINE BEARS N. 07° E. 91.70 FEET WITH HEALED BLAZE.

CAP MED.
T16S R26E
S 35
52 S1
T16S R26E
1959

- #12 FOUND A 3" BRASS CAP ON A 1" IRON PIPE PROTRUDING 2" ABOVE GROUND, FROM WHICH:
A 28" JUNIPER BEARS S. 76° E. 60.48 FEET MKD. T. 16S. R. 26E. S2 CC BT.
A 14" JUNIPER BEARS S. 50° W. 14.60 FEET MKD. T. 16S. R. 26E. S2 CC BT.

CAP MED.
SC.
T16S R26E
S 35 S36
1959

- #16 FOUND 3" BRASS CAP ON 2 1/2" IRON PIPE IN 3' DIAM. M.O.R. PROTRUDING 6" ABOVE GROUND, FROM WHICH:
A 14" PINE BEARS N. 62° E. 20.50 FEET MKD. T. 16S. R. 26E. S36 SC BT.
A 36" PINE BEARS S. 45° E. 126.50 FEET MKD. WITH HEALED OVER BLAZE.

CAP MED.
T16S R26E
1/4 S1
1959

- #39 FOUND 3" BRASS CAP ON 2 1/2" IRON PIPE IN 2' DIAM. M.O.R. PROTRUDING 1" ABOVE GROUND, FROM WHICH:
A 12" FIR BEARS S. 26° E. 12.20 FEET HEALED OVER BLAZE.
A 9" FIR BEARS S. 58° W. 47.90 FEET WITH HEALED OVER BLAZE.

CAP MED.
T16S R26E
S 35
1959

- #74 FOUND 3" BRASS CAP ON A 2 1/2" IRON PIPE PROTRUDING 6" ABOVE GROUND, FROM WHICH:
A 12" BURNT PINE BEARS N. 45° E. 35.00 FEET WITH VISIBLE SCRIBING.
A 5" BURNT PINE BEARS S. 18° E. 5.61 FEET MKD. T. 16S. R. 27E. S7 BT.

CAP MED.
T16S R26E
S 35
1959

- #86 FOUND BRASS CAP AND 2 1/2" IRON PIPE LEANING AGAINST A BT. (DISTURBED) RESET MONUMENT AT CORRECT POSITION BY INTERSECTING DISTANCES FROM THE 3 BT'S AS ESTABLISHED IN 1960 BY THE B.L.M. FROM WHICH:
A 20" JUNIPER BEARS N. 68° E. 44.88 FEET MKD. T. 16S. R. 26E. S2 BT.
A 22" JUNIPER BEARS S. 7° E. 68.64 FEET MKD. T. 16S. R. 26E. S11 BT.
A 22" JUNIPER BEARS S. 60° W. 165.00 FEET MKD. T. 16S. R. 26E. S10 BT.
NOTE FIND 4TH BT. N12°W 36.70 FT. (DOES NOT FIT B.L.M. NOTES).

CAP MED.
T16S R26E
S 35
1959

- #90 FOUND 3" BRASS CAP ON 2 1/2" IRON PIPE PROTRUDING 6" ABOVE GROUND, FROM WHICH:
A FALLEN AND BURNT 14" PINE BEARS S. 12° W. 99.00 FEET WITH BURNT SCRIBING.
A 14" BURNT PINE BEARS N. 36° W. 89.80 FEET WITH BURNT SCRIBING.
A 14" BURNT FALLEN PINE BEAR S12°W 99.00 FEET WITH VISIBLE SCRIBING.

CAP MED.
T16S R26E
S 35
1959

- #63 FOUND 3" BRASS CAP ON 2 1/2" IRON PIPE IN 6' DIAMETER M.O.R., FROM WHICH:
A 30" JUNIPER BEARS S. 84° E. 336.60 FEET MKD. T. 16S. R. 26E. S. 13 BT.
A 36" PINE BEARS S. 14° W. 289.80 FEET MKD. T. 16S. R. 26E. S14 BT.

CAP MED.
T16S R26E
S 35
1959

- #49 FOUND 3" BRASS CAP ON A 2 1/2" IRON PIPE IN 5' DIAMETER LOOSE M.O.R., FROM WHICH:
A FENCE CORNER BEARS S. 60° W. 2.00 FEET
A 8" JUNIPER BEARS S. 15° W. 61.38 FEET MKD. T. 16S. R. 26E. S13 BT.
A 18" JUNIPER BEARS N. 45° W. 52.80 FEET MKD. T. 16S. R. 26E. S12 BT.

CAP MED.
T16S R26E
S 35
1959

- #41 FOUND 3" BRASS CAP ON A 2 1/2" IRON PIPE IN 2' DIAMETER M.O.R. PROTRUDING 12" ABOVE GROUND, FROM WHICH:
A 14" FIR BEARS N. 68° E. 4.40 FEET MKD. WITH HEALED OVER BLAZE.
A 8" FIR BEARS S. 14° E. 20.60 FEET MKD. WITH HEALED OVER BLAZE.
N-S FENCE LINE LIES 32 FEET WEST OF CORNER.

CAP MED.
T16S R26E
S 35
1959

- #38 FOUND 3" BRASS CAP ON 2 1/2" IRON PIPE IN 2' DIAMETER M.O.R. FROM WHICH:
A 21" PINE BEARS S. 55° W. 33.3 FEET MKD. 1/4 S. 13 BT.
A 31" PINE BEARS N. 32° W. 73.20 FEET WITH GROWN OVER BLAZE.
N-S FENCE LINE LIES 10.00 FEET WEST OF CORNER.

CAP MED.
T16S R26E
S 35
1959

- #30 FOUND 3" BRASS CAP ON 2 1/2" IRON PIPE IN 3' DIAMETER M.O.R., FROM WHICH:
A 24" JUNIPER BEARS S. 57° E. 41.30 FEET MKD. T. 16S. R. 27E. S19 BT.
A 14" JUNIPER BEARS N. 53° E. 153.10 FEET WITH HEALED OVER BLAZE.
N-S FENCE LINE LIES 23.00 FEET WEST OF CORNER.

CAP MED.
T16S R26E
S 35
1959

- #21 FOUND 3" BRASS CAP ON 2 1/2" IRON PIPE IN 2' DIAMETER M.O.R. FROM WHICH:
A 12" DOUBLE JUNIPER BEARS S. 83° W. 98.80 FEET MKD. T. 16S. R. 26E. S24 BT.
A 12" JUNIPER BEARS N. 42° W. 122.50 FEET MKD. T. 16S. R. 26E. S13 BT.
N-S FENCE LINE LIES 10.50 FEET EAST OF CORNER.

CAP MED.
T16S R26E
S 35
1959

- #27 FOUND 3" BRASS CAP ON 2 1/2" IRON PIPE IN 2' DIAMETER M.O.R. FROM WHICH:
A 12" DOUBLE JUNIPER BEARS S. 83° W. 98.80 FEET MKD. T. 16S. R. 26E. S24 BT.
A 12" JUNIPER BEARS N. 42° W. 122.50 FEET MKD. T. 16S. R. 26E. S13 BT.
N-S FENCE LINE LIES 10.50 FEET EAST OF CORNER.

SET MONUMENTS

CAP MED.
T16S R26E
1/4 S1
S12
P.L.S. 1678
1979

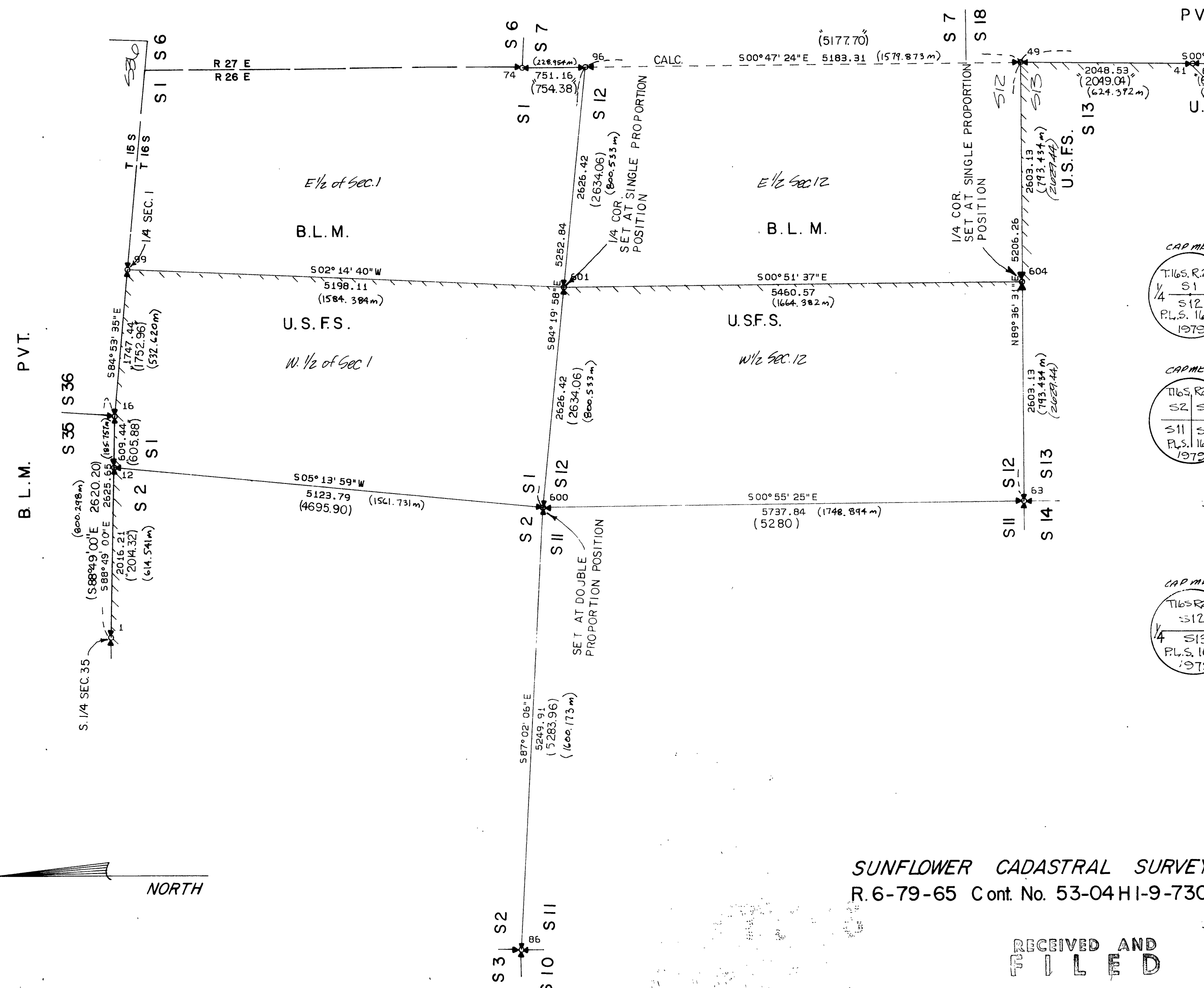
- #601 SET A 3" ALUMINUM CAP ON 2 1/2" ALUMINUM PIPE IN 3' DIAMETER M.O.R. PROTRUDING 8" ABOVE GROUND, FROM WHICH:
A 10" JUNIPER BEARS S. 52° E. 237.10 FEET SCRIBED 1/4 S. 12 B.T.
A 1" IRON ROD BEARS N. 16° E. 93.52 FEET MKD. RM.S1.

CAP MED.
T16S R26E
S2 S1
S11 S12
P.L.S. 1678
1979

- #600 SET 3" ALUM. CAP ON 2 1/2" ALUM. PIPE PROTRUDING 24" ABOVE GROUND IN 3' DIAMETER M.O.R. TO TOP, FROM WHICH:
A 6" JUNIPER BEARS N. 10° E. 77.00 FEET SCRIBED T. 16S. R. 26E. S. 1 B.T.
A 10" JUNIPER BEARS S. 16° E. 30.70 FEET SCRIBED T. 16S. R. 26E. S12 B.T.
A 14" PINE BEARS S. 70° W. 59.00 FEET SCRIBED T. 16S. R. 26E. S11 B.T.
A 8" JUNIPER BEARS N. 49° W. 52.60 FEET SCRIBED T. 16S. R. 26E. S2 B.T.

CAP MED.
T16S R26E
1/4 S12
P.L.S. 1678
1979

- #604 SET 3" ALUM. CAP ON 2 1/2" ALUM. PIPE PROTRUDING 6" ABOVE GROUND IN 3' DIAMETER M.O.R. FROM WHICH:
A 8" FIR BEARS N. 24° E. 36.80 FEET SCRIBED 1/4 S. 12 B.T.
A 9" FIR BEARS S. 34° E. 57.50 FEET SCRIBED 1/4 S. 13 B.T.
A N-S FENCE LINE LIES 42.00 FEET EAST OF CORNER.
A SMALL MOUND OF STONES BEARS S10° E. 30.00 FEET, NO MARKS FOUND, NO STONES AS LARGE AS CALLED FOR IN G.L.O. NOTES.



SUNFLOWER CADASTRAL SURVEY
R. 6-79-65 Cont. No. 53-04 HI-9-7306 N.

RECEIVED AND
FILED

OCT 5 1979

JOHN LIVEIRA, County Clerk
Dennis Lawrence, Deputy

Official Approval Block

Official Approval Block

Design By G.W.H.

Drawn By S.L.P.

Checked By G.W.H.

Approved By

Date 8-13-79

Scale 1" = 1000'

Drawing No.

042.006.49

REVISIONS

No.	By	Appr.	Date

BOUNDARY SURVEY
LOCATED IN T. 16S, R. 26 E. W.M.
GRANT COUNTY, OREGON

FOR: U.S. FOREST SERVICE
OCHOCO NATIONAL FOREST

CENTURY WEST ENGINEERING CORPORATION

SHEET
1 OF 2