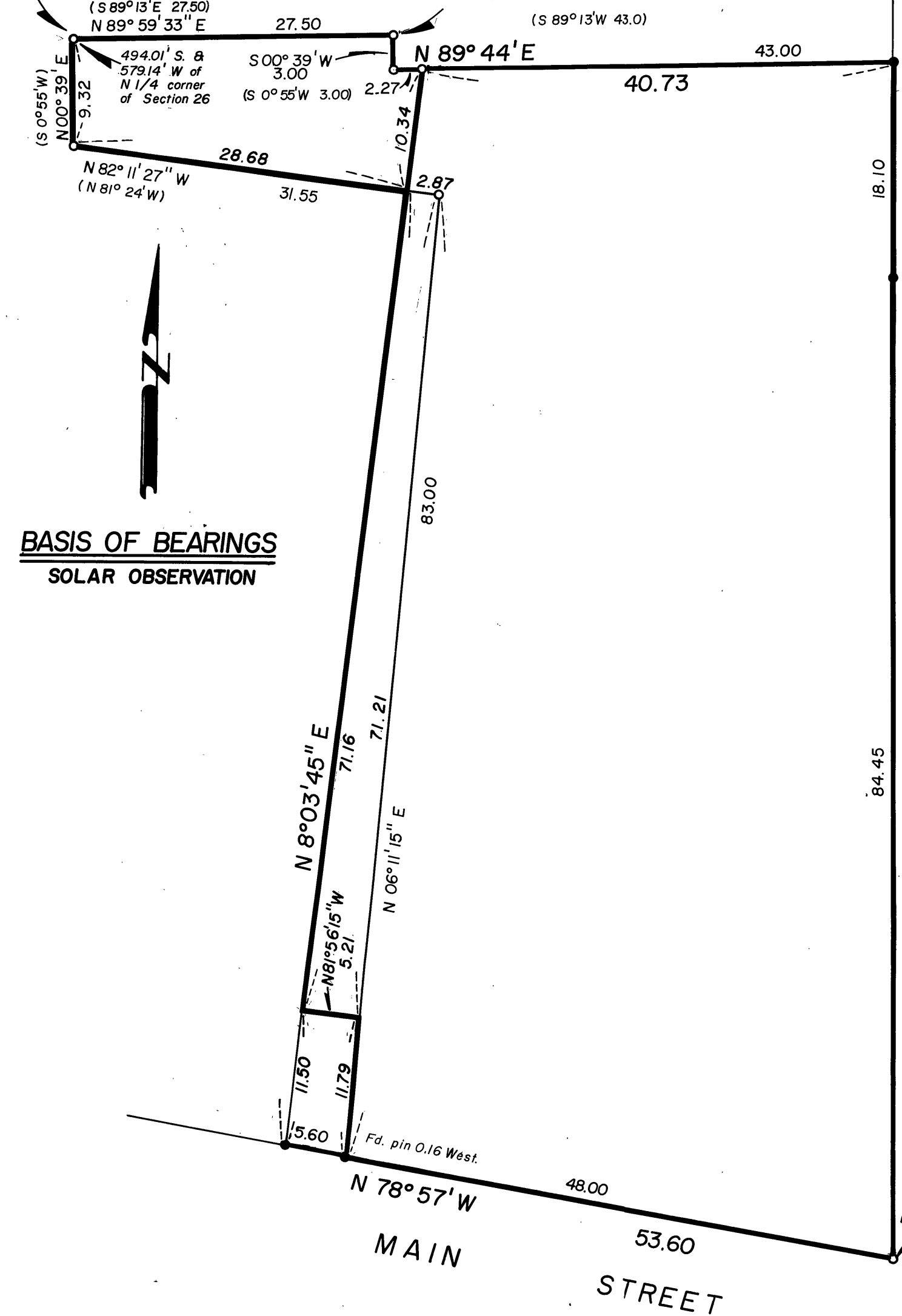


Chiseled 3" 'X' in SW side of concrete pier

Set PK nail & chiseled 2" 'X' in concrete window well



**BASIS OF BEARINGS**  
SOLAR OBSERVATION

**LEGEND**

- Found monument of record
- Set 5/8" x 30" iron pin unless otherwise noted
- ( ) Record Bearing and Distance

**REFERENCES**

Map of Survey 116 A

RECEIVED AND  
**FILED**  
JUL 25 1978  
JOHN LIVEIRA County Clerk  
Deputy

REGISTERED  
PROFESSIONAL  
LAND SURVEYOR

*Robert D. Bagett*  
OREGON  
JULY 12, 1963  
ROBERT D. BAGETT  
598

BAGETT, GRIFFITH & ASSOCIATES John Day, Oregon Map of Survey		
PORTION OF LOT 7, BLOCK E CITY OF JOHN DAY GRANT COUNTY, OREGON		
SURVEYED FOR	LES HERBURGER	
SURVEYED BY	R.D.B. & S.F.J.	6-26-78
Scale: 1" = 100'	Drawn by: K.M.S.	6-27-78