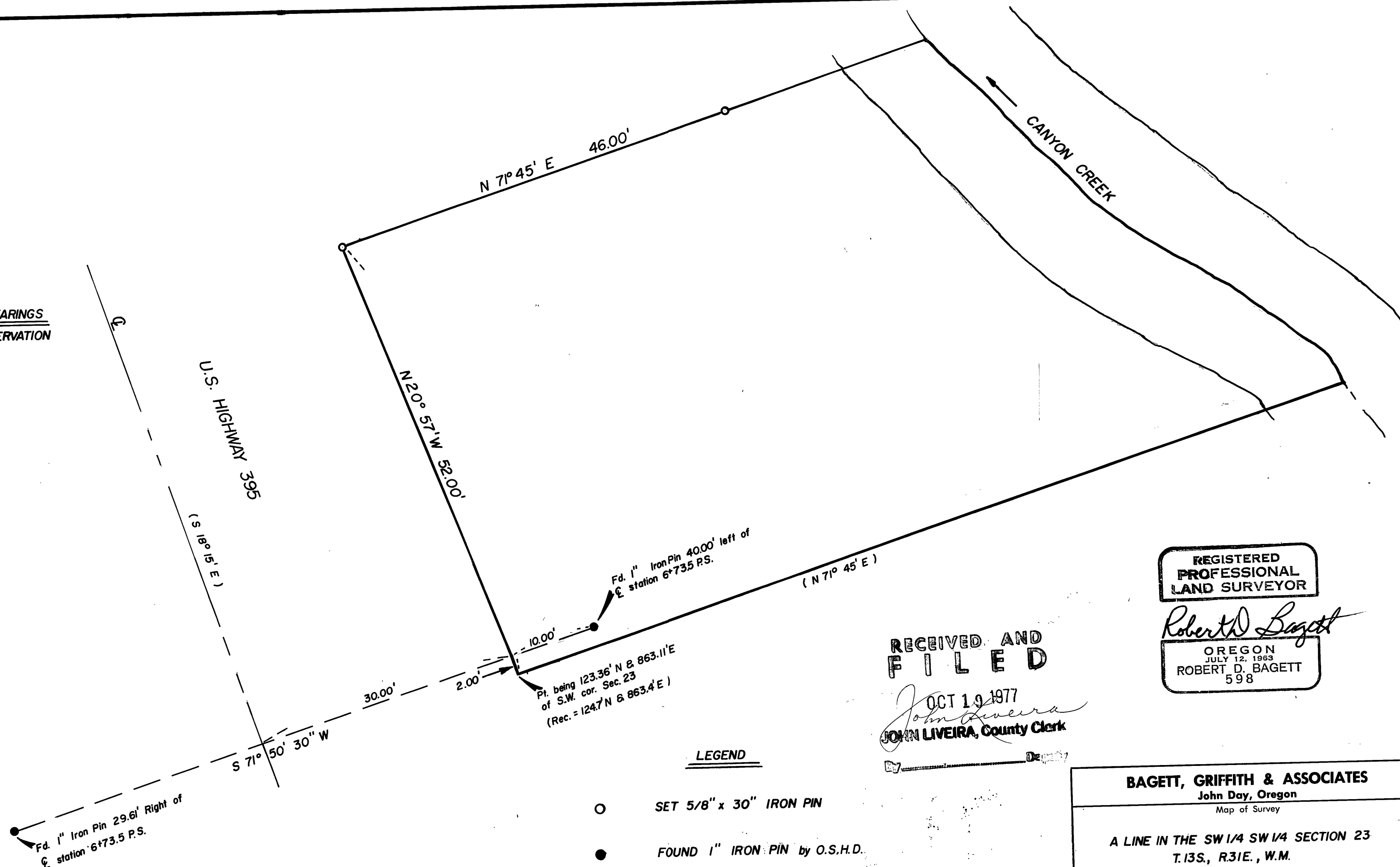




BASIS OF BEARINGS  
SOLAR OBSERVATION



LEGEND

- SET 5/8" x 30" IRON PIN
- FOUND 1" IRON PIN by O.S.H.D.
- ( ) RECORD

RECEIVED AND  
FILED

OCT 19 1977  
JOHN LIVEIRA, County Clerk

REGISTERED  
PROFESSIONAL  
LAND SURVEYOR

*Robert D. Bagett*

OREGON  
JULY 12, 1963  
ROBERT D. BAGETT  
598

**BAGETT, GRIFFITH & ASSOCIATES**

John Day, Oregon

Map of Survey

**A LINE IN THE SW 1/4 SW 1/4 SECTION 23  
T.13S., R.31E., W.M.**

GRANT COUNTY, OREGON

SURVEYED FOR	RANDY MOLES	
SURVEYED BY	R.D.B. - S.L.C.	9-77
Scale: 1"=10'	Drawn by: S.L.C.	9-77

MAP OF SURVEY NO. 461