

RECEIVED AND
FILED

APR 23 1974

JOHN LIVEIRA, County Clerk
By *Barbara L. Lemoine* Deputy

T.13 S. R.29 E.
23 24
26 25

BASIS OF BEARINGS
SOLAR OBSERVATION

S 72° 00' 17" W 915.40'

1277.05'

2636.19' S 0° 07' 57" E
(North. 2640.0')

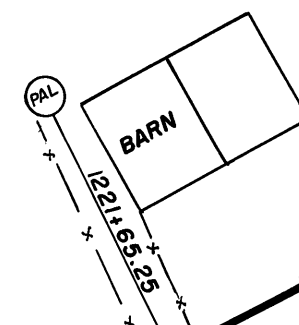
660.00'

DON BOYER
15 ACRES

500' Spiral
S = 10° 00'
d = 0.8

4° C.L.
TA = 23° 19'
Ts = 546.8'
R = 1432.40'

500' Spiral
S = 10° 00'
d = 0.8



DAY

JOHN

REFERENCE MATERIAL

ORE. STATE HIGH. DEPT. DRG. NO. 7B-20-6

HIGHWAY

LEGEND

- Set 5/8" x 30" iron pin
- ⊙ Brass cap (see remonumentation notes)
- ⊙ Access - station and width
- () record bearing and distance
- x — fence

REGISTERED
PROFESSIONAL
LAND SURVEYOR

Robert D. Baggett
OREGON
JULY 12, 1963
ROBERT D. BAGGETT
598

BAGETT, GRIFFITH & ASSOCIATES

John Day, Oregon

Map of Survey

A TRACT OF LAND
SITUATED IN THE NE 1/4
SEC. 26, T.13S., R.29E., W.M.

GRANT COUNTY, OREGON

SURVEYED FOR	DON BOYER	
SURVEYED BY	R.D.B., D.I.G.	April 74
Scale: 1" = 100'	Drawn by: J.S.P.	April 74

SURVEY NO. 337