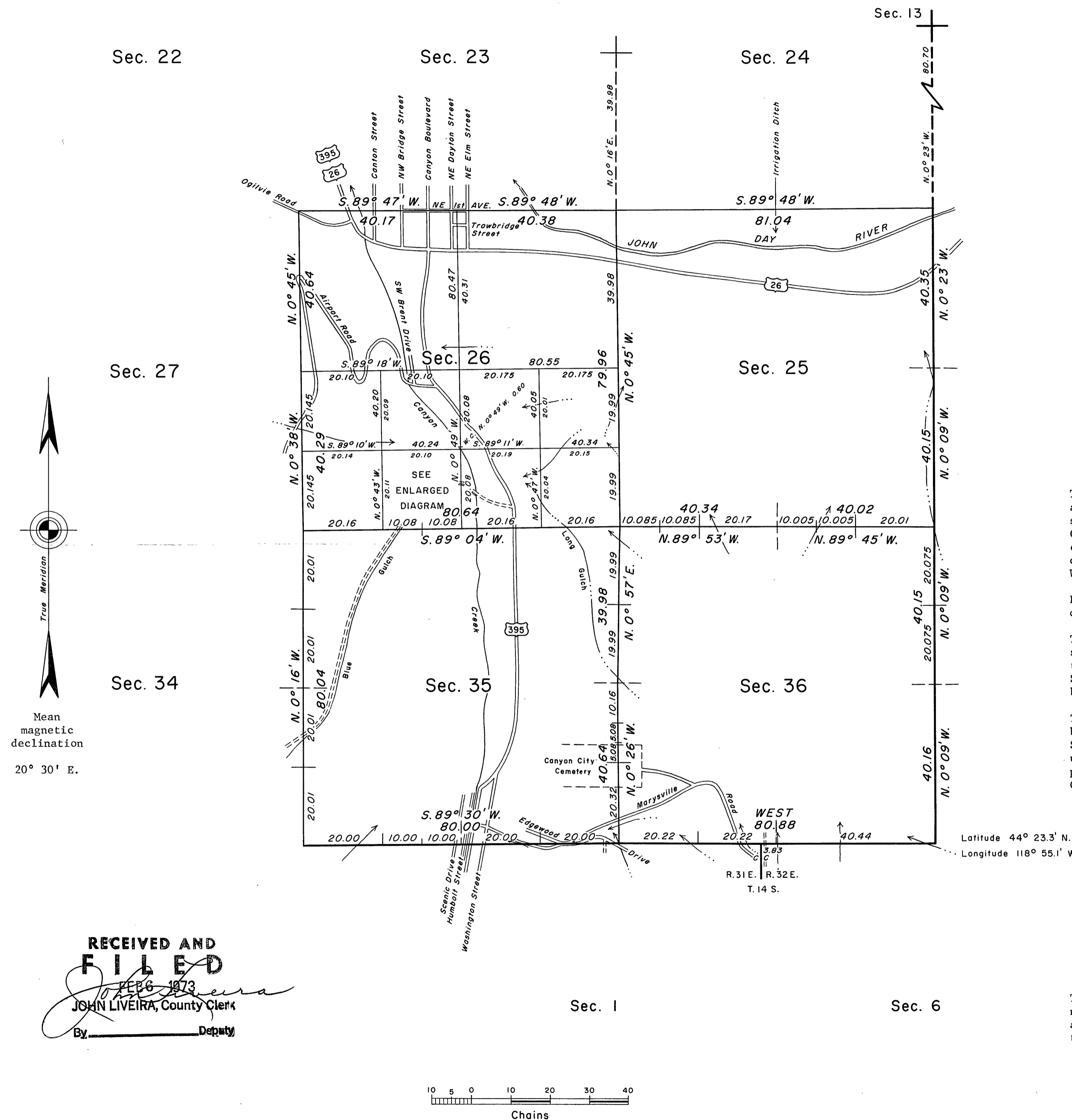
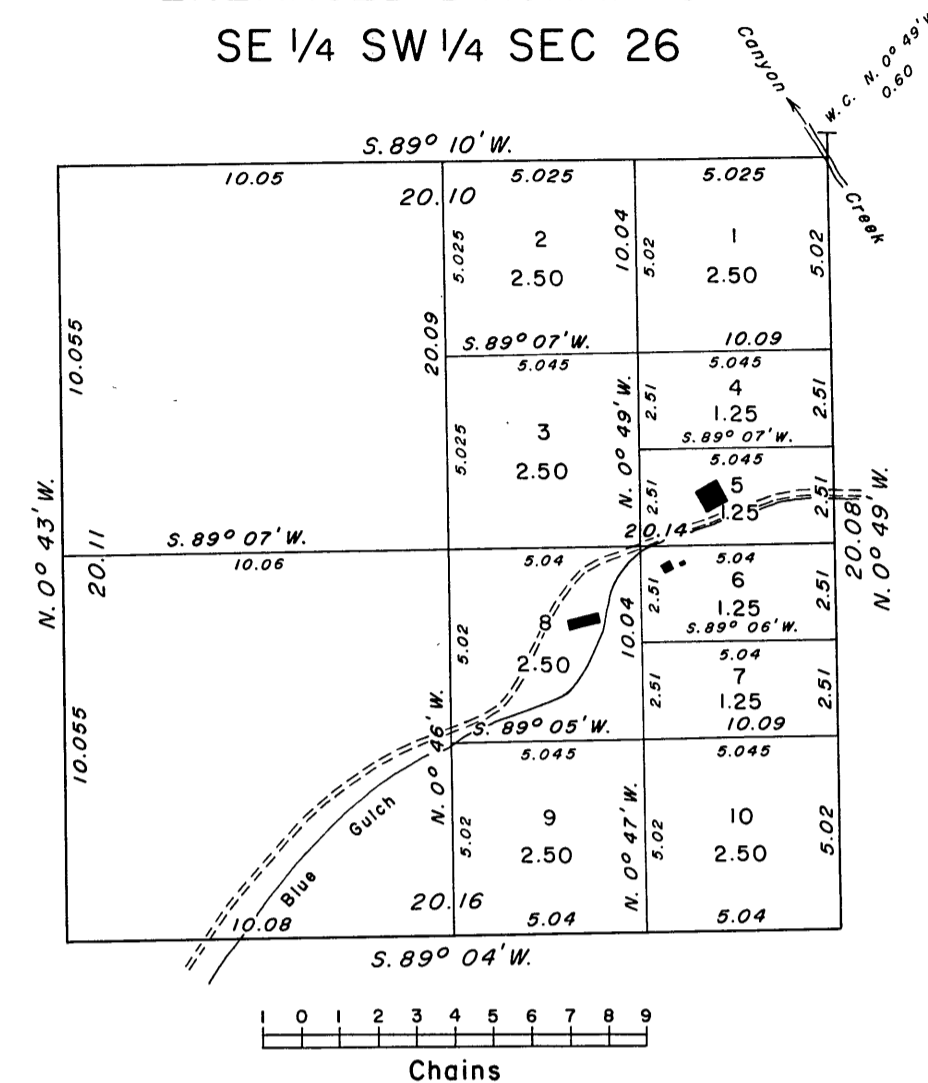


TOWNSHIP 13 SOUTH, RANGE 31 EAST, OF THE WILLAMETTE MERIDIAN, OREGON.

DEPENDENT RESURVEY AND SUBDIVISION OF SECTION 26



ENLARGED DIAGRAM OF
SE 1/4 SW 1/4 SEC 26



This plat represents a retracement and reestablishment of a portion of the south and east boundaries and subdivisional lines, T. 13 S., R. 31 E., Willamette Meridian, Oregon, designed to restore the corners in their true original location according to the best available evidence; and subdivision of section 26, T. 13 S., R. 31 E., Willamette Meridian, Oregon.

Except as indicated, the lottings and areas are as shown on the plat approved November 17, 1869.

Thompson, Pengra, and David surveyed the boundaries and subdivisional lines, in 1869. Closing corners were established against the south boundary by Banford Robb and Samuel W. Lackland, in 1880. A portion of the south boundary was retraced by John G. Collins, in 1923-24.

The resurvey and subdivision of section 26 was executed by Harvey E. Wofford and Lester E. Fischer, Cadastral Surveyors, from August 16, 1971 to September 22, 1971, under Special Instructions dated August 12, 1971, which provide for the surveys included under Group No. 741, Oregon.

UNITED STATES DEPARTMENT OF THE INTERIOR
BUREAU OF LAND MANAGEMENT
Washington, D.C. August 31, 1972

This plat is strictly conformable to the approved field notes, and the survey, having been correctly executed in accordance with the requirements of law and the regulations of this Bureau, is hereby accepted.

For the Director

Clark I. Lumm

Chief, Division of Cadastral Survey

RECEIVED AND
FILED

JOHN LIVEIRA, County Clerk

By Deputy

Timber in this area consists of
juniper, pine and cottonwood.

Area resurveyed: 2560 acres