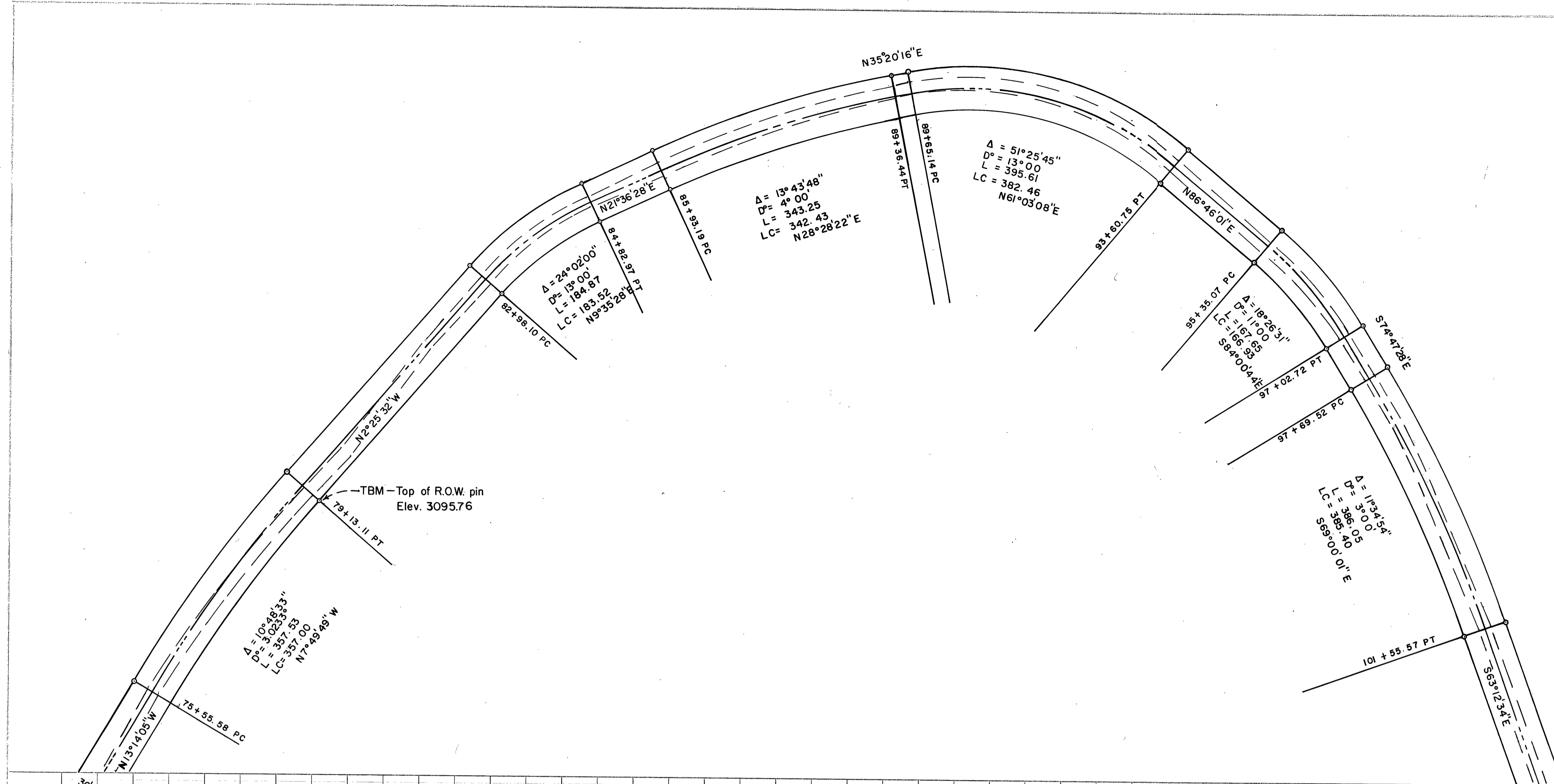


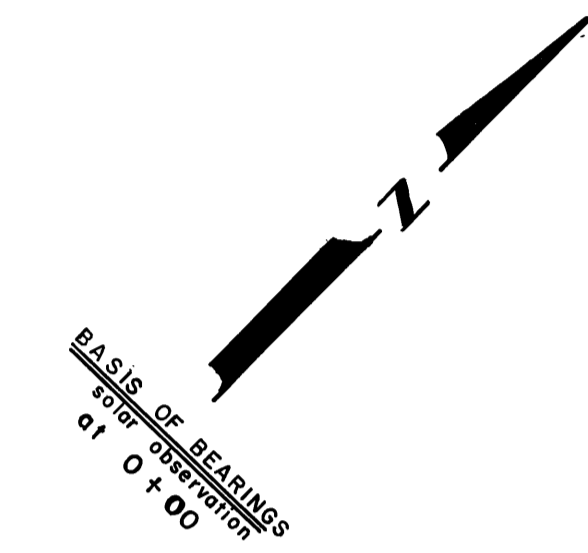
DATE	
BY	
REVISIONS	
NO.	
DATE	
BY	
REVISIONS	
NO.	
DATE	
BY	
REVISIONS	
NO.	

DATE	
BY	
REVISIONS	
NO.	
DATE	
BY	
REVISIONS	
NO.	
DATE	
BY	
REVISIONS	
NO.	



LEGEND

o SET 5/8" x 30" IRON PIN



REGISTERED
PROFESSIONAL
LAND SURVEYOR

Robert D. Bagett
ROBERT D. BAGETT
598

RECEIVED AND
FILED
JUL 16 1972
John Livera
JOHN LIVERA, County Clerk
Deputy

BAGETT-GRIFFITH-FERGUSON
John Day, Oregon
Map of Survey
MIDDLE FORK OF JOHN DAY RIVER
COUNTY ROAD
RIGHT OF WAY & PROFILE
GRANT COUNTY, OREGON

SURVEYED FOR	GRANT COUNTY ROAD DEPT.
SURVEYED BY	R.D.B. & J.D.B. 1/72
Scale: 1" = 100'	Drawn by: J.D.B. 1/72

