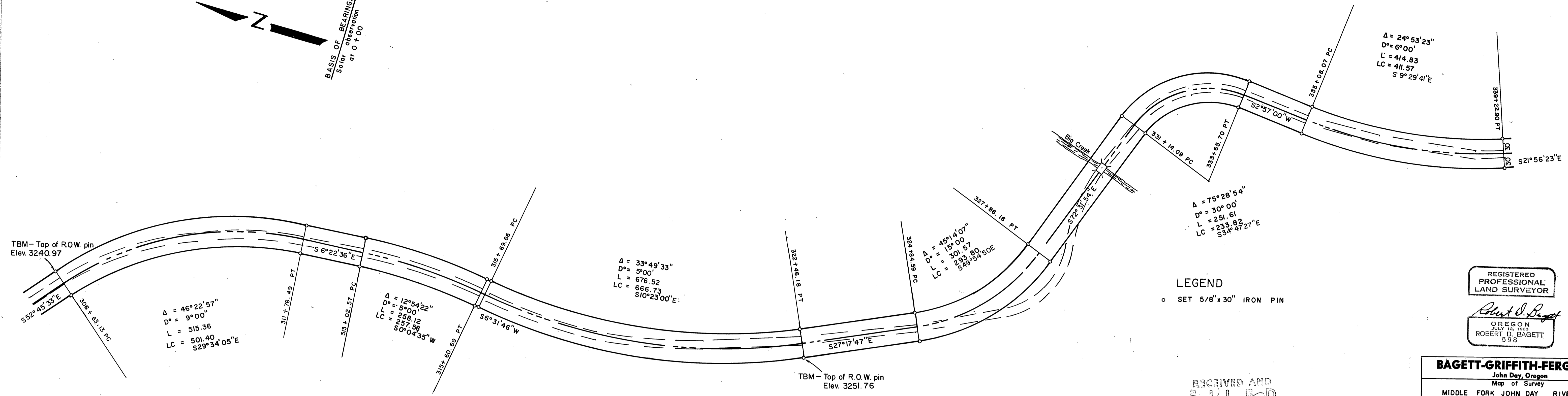


DATE	
BY	
REVISION	
NOTED	
ADJUSTMENT CHECKED	
NO. OF VIMS CHECKED	
NO. OF VIMS CHECKED	
NO. OF VIMS CHECKED	

DATE	
BY	
REVISION	
NOTED	
ADJUSTMENT CHECKED	
NO. OF VIMS CHECKED	
NO. OF VIMS CHECKED	
NO. OF VIMS CHECKED	

BASIS OF BEARINGS
Solar observation
at 0 + 00



LEGEND
○ SET 5/8" x 30" IRON PIN

REGISTERED
PROFESSIONAL
LAND SURVEYOR
Robert D. Bagett
OREGON
JULY 12 1968
ROBERT D. BAGETT
598

RECEIVED AND
FILED
JUL 16 1972
JAMES L. LIVERMAN, County Clerk
Grant County, Oregon

BAGETT-GRIFFITH-FERGUSON
John Day, Oregon
Map of Survey
MIDDLE FORK JOHN DAY RIVER
COUNTY ROAD
RIGHT OF WAY & PROFILE
GRANT COUNTY, OREGON

SURVEYED FOR	GRANT COUNTY ROAD DEPT.
SURVEYED BY	R.D.B. & J.D.B. 1/72
Scale: 1" = 100'	Drawn by: J.D.B. 1/72

