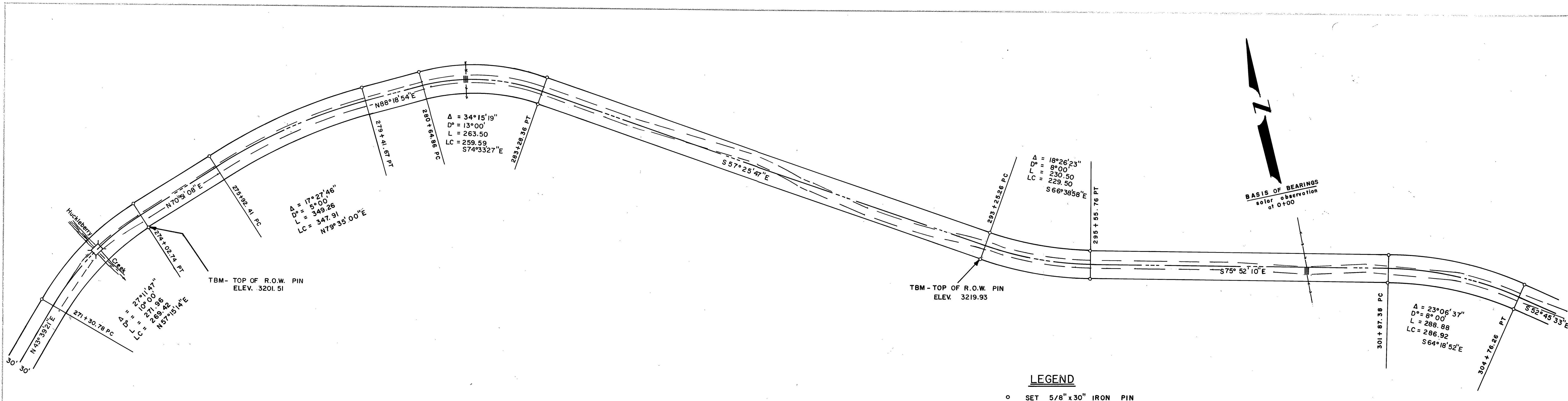


DATE	
BY	
REVISIONS	
NO.	
DESCRIPTION	
DATE	
BY	
REVISIONS	
NO.	
DESCRIPTION	
DATE	
BY	



LEGEND

○ SET 5/8" x 30" IRON PIN

DESIGNED AND
Robert D. Baggett
 REGISTERED PROFESSIONAL LAND SURVEYOR

REGISTERED
 PROFESSIONAL
 LAND SURVEYOR

Robert D. Baggett
 OREGON
 JULY 12, 1988
 ROBERT D. BAGGETT
 598

BAGETT-GRIFFITH-FERGUSON

John Day, Oregon
 Map of Survey
 MIDDLE FORK OF JOHN DAY RIVER
 COUNTY ROAD
 RIGHT OF WAY & PROFILE
 GRANT COUNTY, OREGON

SURVEYED FOR	GRANT COUNTY ROAD DEPT.
SURVEYED BY	R. D.B. & J.D.B. 1/72
Scale: 1" = 100'	Drawn by: J.D.B. 1/72

DATE	
BY	
REVISIONS	
NO.	
DESCRIPTION	
DATE	
BY	
REVISIONS	
NO.	
DESCRIPTION	
DATE	
BY	

