

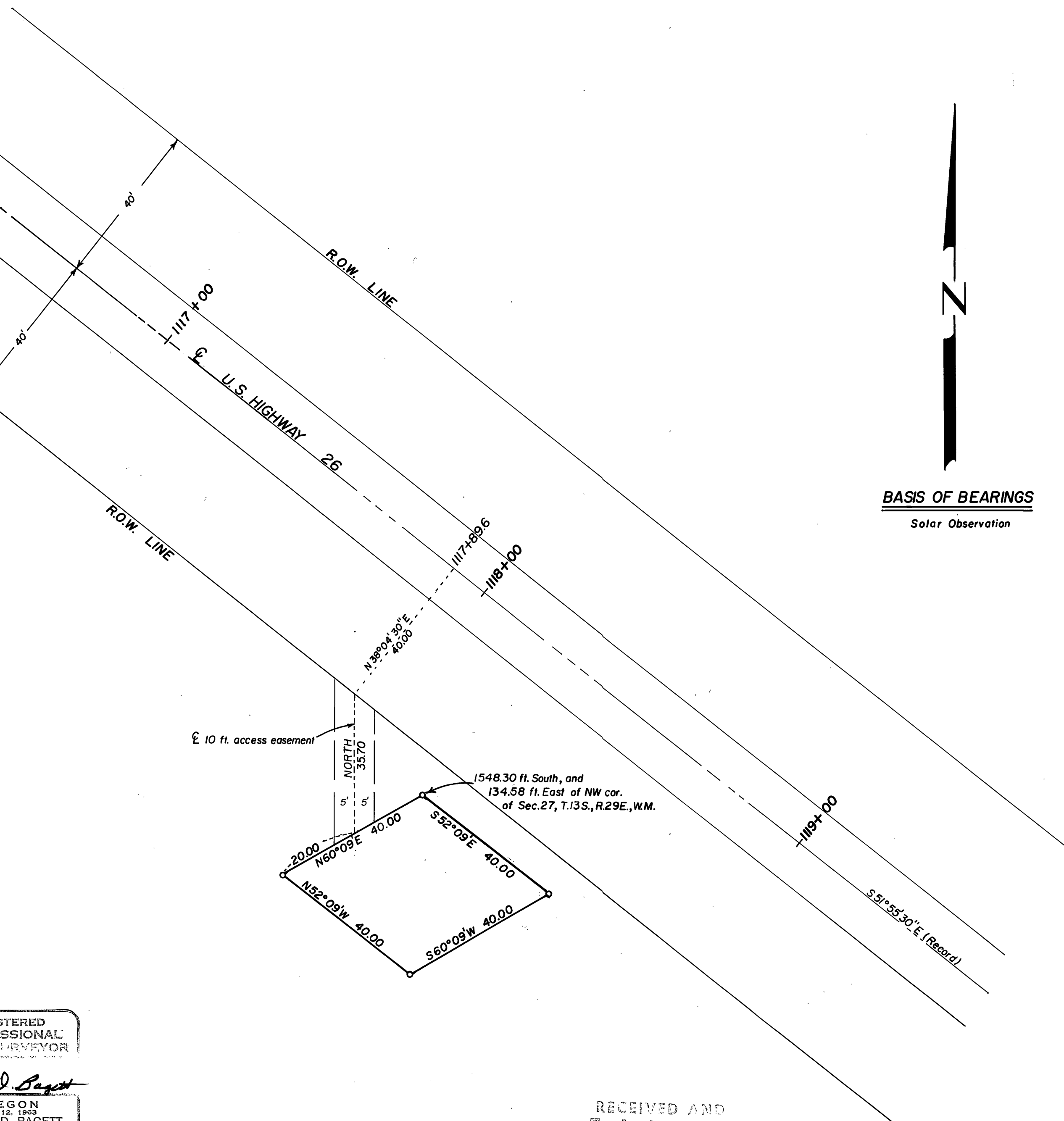
T.13S., R.29E., W.M.

21 22
28 27

SOUTH 1379.9 (Rec.)

1116+09.3 (Record)

Section line



BASIS OF BEARINGS
Solar Observation

LEGEND

- Set 5/8" x 30" iron pin.
- ⊙ Found brass cap.

NOTE

Highway stationing and bearings determined from Oregon State Highway Dep't. drawing no. 7B-20-5, part I.
No highway right of way monuments were found in this area.

REGISTERED
PROFESSIONAL
LAND SURVEYOR

Robert D. Baggett

OREGON
JULY 12, 1963
ROBERT D. BAGGETT
598

RECEIVED AND
FILED
JAN 25 1972
JOHN LIVEIRA, County Clerk
John Liveira

BAGETT-GRIFFITH-FERGUSON		
John Day, Oregon		
Map of Survey		
A TRACT OF LAND SITUATED IN THE SW 1/4 NW 1/4 SEC. 27, T.13S., R.29E., W.M. GRANT COUNTY, OREGON		
SURVEYED FOR	CALIFORNIA PACIFIC UTILITIES CO.	
SURVEYED BY	R.D.B. & J.D.B.	1-20-72
Scale: 1" = 20'	Drawn by: R.D.B.	1-22-72