

TOWNSHIP 12 SOUTH, RANGE 27 EAST, OF THE WILLAMETTE MERIDIAN, OREGON.

DEPENDENT RESURVEY

T. 11 S., R. 26 E.

T. 11 S., R. 27 E.

Sec. 36

Sec. 31

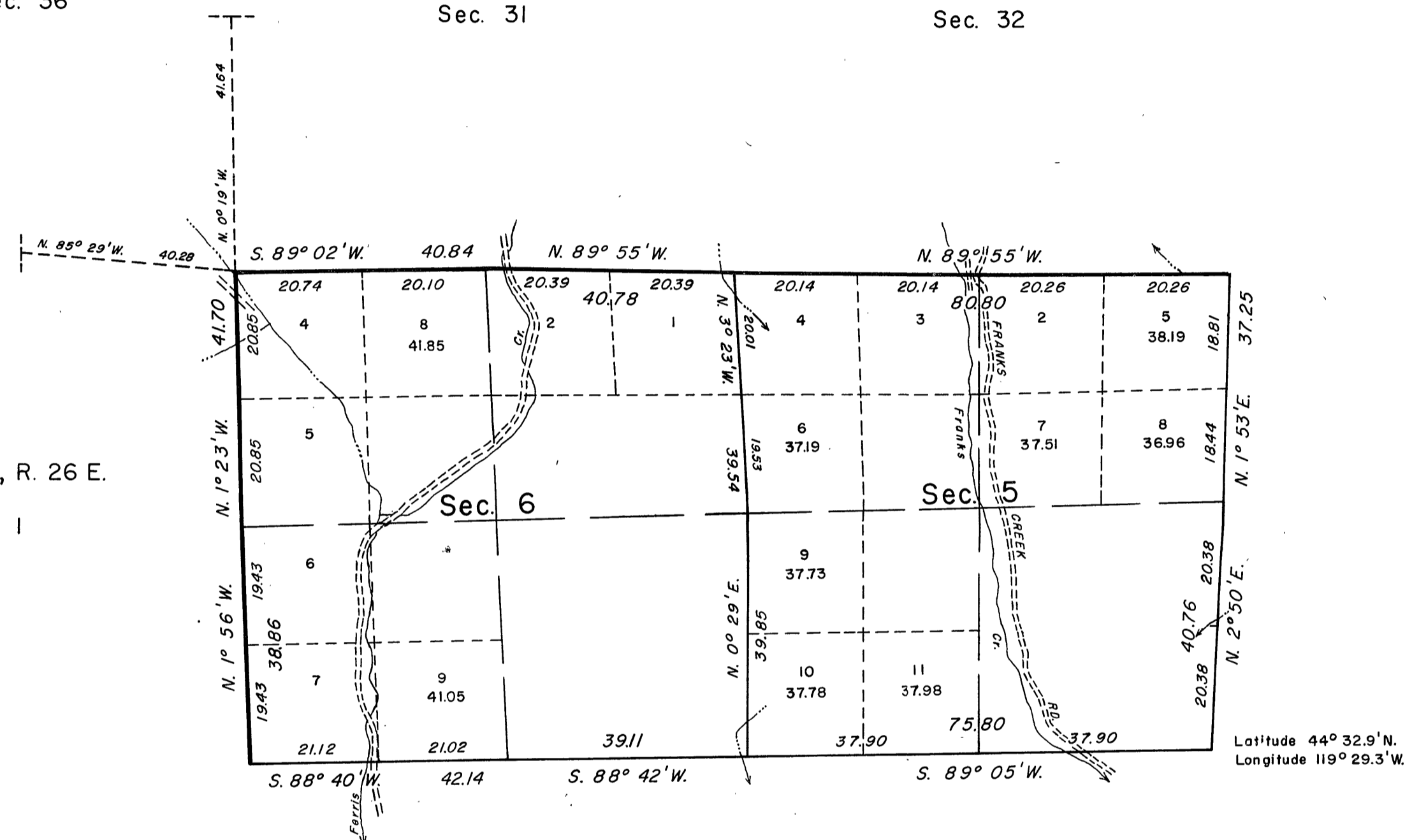
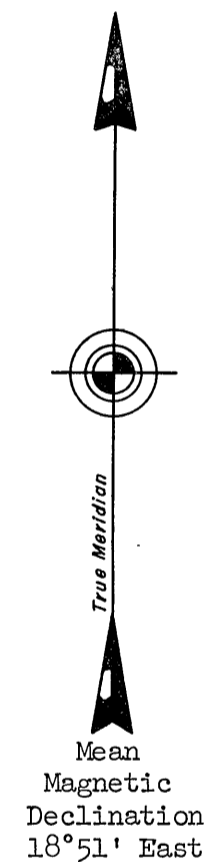
Sec. 32

Sec. 33

T. 12 S., R. 26 E.

Sec. 1

Sec. 4



This plat represents a retracement and reestablishment of a portion of the north and west boundaries, and a portion of the subdivisional lines, designed to restore the corners in their true original locations according to the best available evidence; and, excepting as new or modified vacant subdivisions are shown hereon the lottings and areas are as shown on the plat approved September 29, 1884.

The north and west boundaries were surveyed by William H. Byars in 1873. The north boundary was retraced by Aaron F. York in 1880. The subdivisional lines were surveyed by William R. Gradon in 1884.

The resurvey was executed by Floyd A. Brooks, Cadastral Surveyor, April 19 to May 8, 1968, under Special Instructions dated September 6, 1962, which provide for the surveys included under Group No. 484, Oregon.

Sec. 12

Sec. 7

Sec. 8

Sec. 9

UNITED STATES DEPARTMENT OF THE INTERIOR
BUREAU OF LAND MANAGEMENT
Washington, D. C. October 19, 1970

This plat is strictly conformable to the approved field notes, and the survey, having been correctly executed in accordance with the requirements of law and the regulations of this Bureau, is hereby accepted.

For the Director

Mark F. Lamm

Chief, Division of Cadastral Survey

10 5 0 10 20 30 40
Chains
Area resurveyed: 1,272.63 Acres

RECEIVED AND

FILED

MAY 18 1971

JOHN LIVEIRA, County Clerk

By _____ Deputy

Timber in this area consists of ponderosa pine, juniper, lodge pole pine, mountain mahogany, and fir.