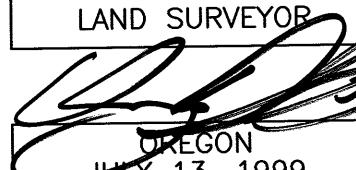
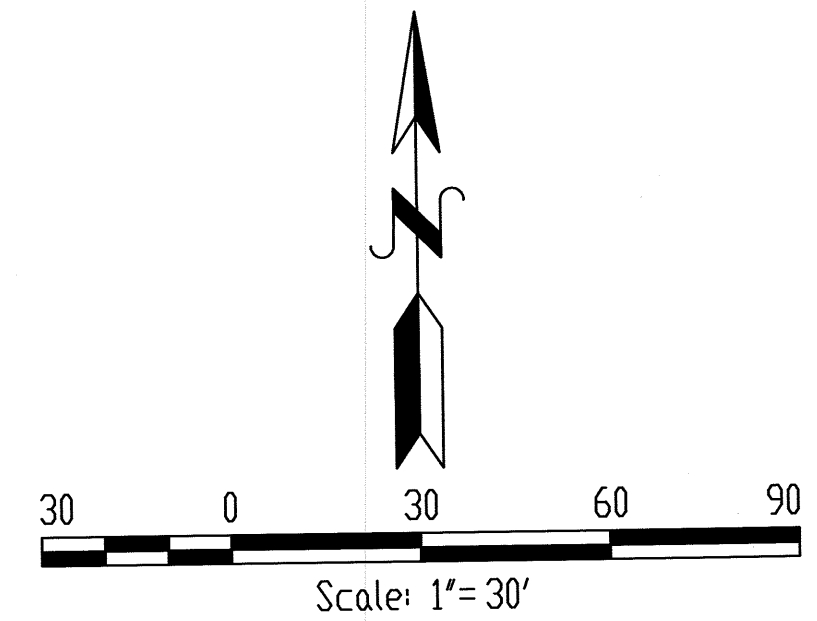


**PROPERTY LINE ADJUSTMENT**  
**SITUATED IN NE1/4SW1/4 AND SE1/4SW1/4**  
**OF SECTION 21, T.13S., R.30E., W.M.**  
**CITY OF MT. VERNON,**  
**GRANT COUNTY, OREGON.**  
 COMPLETED MAY 19, 2023

REGISTERED  
 PROFESSIONAL  
 LAND SURVEYOR  
  
 OREGON  
 JULY 13, 1999  
 KENNETH H. DELANO JR.  
 49865  
 RENEWS: 1/1/2024

**Kenny Delano, PLS 49865**  
**Land Surveyor**  
 P.O. Box 12  
 Mt. Vernon, OR 97865  
 e-mail: kennyfse@ortelco.net  
 Phone: 541-620-1732



**BASIS OF BEARINGS: GRANT COUNTY**  
**LAND PARTITION PLAT #2006-18 AS SHOWN**

**NARRATIVE**

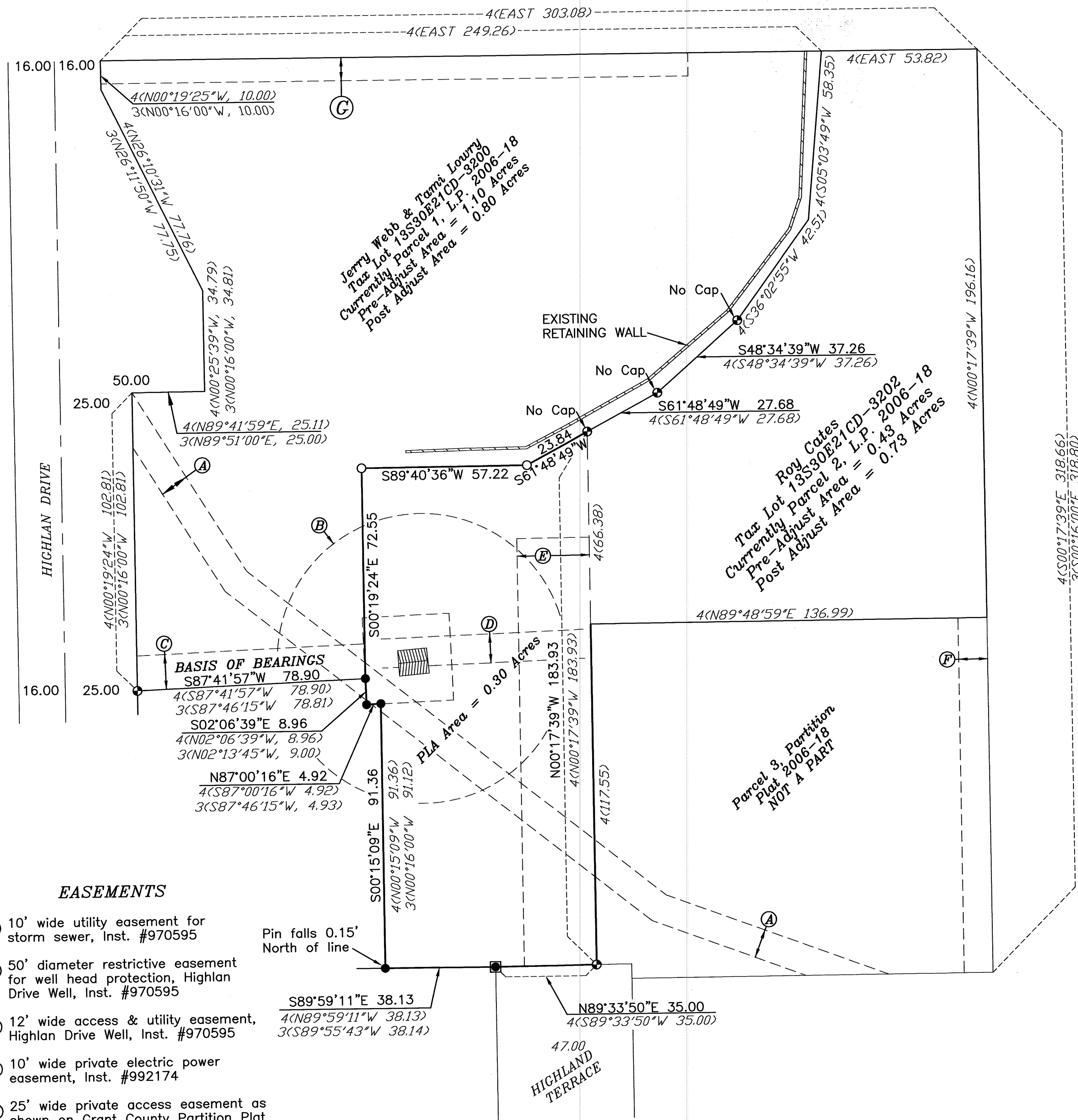
This property line adjustment survey was requested by Jerry Webb to locate and monument the boundary of the real property as described in Instrument #20230832 recorded on May 18, 2023 in the Grant County Records. It should be noted that the deed area calls 0.36 acres and the actual survey area is 0.30 acres.

Record monuments, as they are pertinent to the property line adjustment, are located and tied as shown. The remainder of the exterior boundaries are shown based on Grant County Land Partition Plat #2006-18, by Kenny Delano Jr., filed on October 23, 2006 in the Grant County Plat Records.

**LEGEND**

- 3<BEARING/DIST> Record bearing/distance as shown on Grant County Land Partition Plat #98-27 by Robert Bagett, filed on July 21, 1998
- 4<BEARING/DIST> Record bearing/distance as shown on Grant County Land Partition Plat #2006-18 by Kenny Delano Jr., filed on October 23, 2006
- Found 2" I.D. Iron Pipe. Refer to Grant County Land Partition Plat #2006-18 & Grant County Map of Survey 164.
- Found 5/8" iron pin with yellow "BGB" cap set on Grant County Land Partition Plat 98-27.
- Found 5/8" iron pin with yellow "FS&E" cap set Grant County Land Partition Plat #2006-18.
- Set 5/8"x30" rebar pin with yellow plastic cap marked "Survey Marker PLS 49865".
- Adjusted Record Property Line.
- Adjusted Property Line
- - - Record Easement Lines

**GRANT COUNTY MAP OF SURVEY #2209**



**EASEMENTS**

- Ⓐ 10' wide utility easement for storm sewer, Inst. #970595
- Ⓑ 50' diameter restrictive easement for well head protection, Highlan Drive Well, Inst. #970595
- Ⓒ 12' wide access & utility easement, Highlan Drive Well, Inst. #970595
- Ⓓ 10' wide private electric power easement, Inst. #992174
- Ⓔ 25' wide private access easement as shown on Grant County Partition Plat 2006-18.
- Ⓕ 10' wide private sanitary sewer easement as shown on Grant County Partition Plat 2006-18.
- Ⓖ 8' wide private easement for cut & fill slope construction & maintenance, Inst. #930952

NOTE: Easements are shown for informational purposes. Refer to Partition Plat 2006-18

RECEIVED AND FILED  
 GRANT COUNTY SURVEYOR

JUN 26 2023  
 BY: 