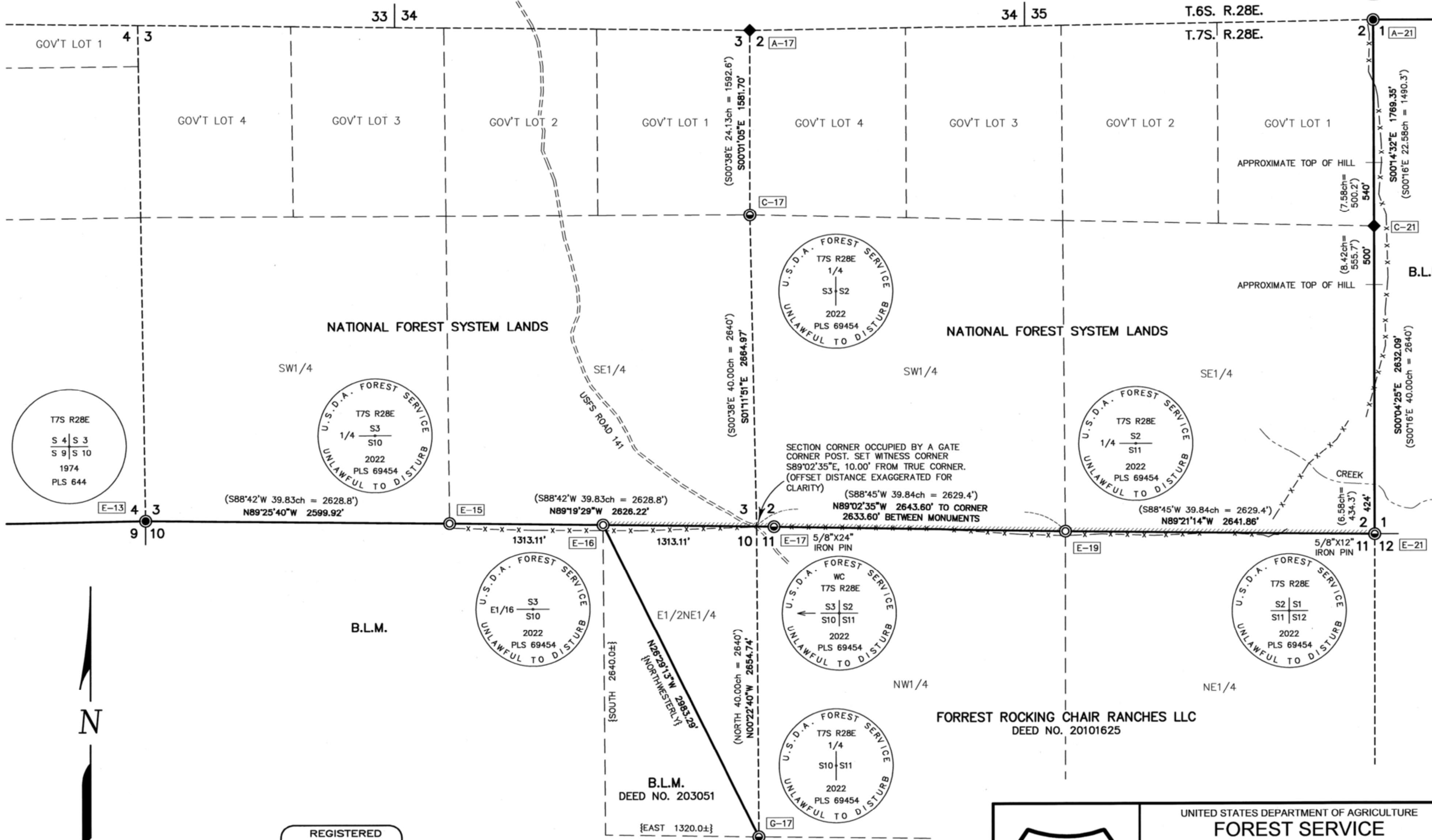


T6S R28E
S 35
S 5 | S 1
T7S
1974
PLS 644

MATCH LINE - SEE SHEET 1



T7S R28E
S 4 | S 3
S 9 | S 10
1974
PLS 644

U.S.D.A. FOREST SERVICE
T7S R28E
S3
1/4 S10
2022
PLS 69454
UNLAWFUL TO DISTURB

U.S.D.A. FOREST SERVICE
T7S R28E
1/4
S3-S2
2022
PLS 69454
UNLAWFUL TO DISTURB

U.S.D.A. FOREST SERVICE
T7S R28E
1/4
S2
S11
2022
PLS 69454
UNLAWFUL TO DISTURB

U.S.D.A. FOREST SERVICE
S3
E1/16 S10
2022
PLS 69454
UNLAWFUL TO DISTURB

U.S.D.A. FOREST SERVICE
WC
T7S R28E
S3 | S2
S10 | S11
2022
PLS 69454
UNLAWFUL TO DISTURB

U.S.D.A. FOREST SERVICE
T7S R28E
S2 | S1
S11 | S12
2022
PLS 69454
UNLAWFUL TO DISTURB

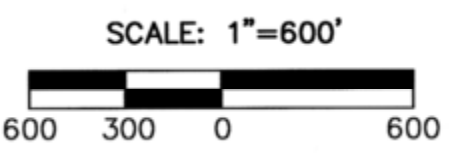
U.S.D.A. FOREST SERVICE
T7S R28E
1/4
S10-S11
2022
PLS 69454
UNLAWFUL TO DISTURB



BASIS OF BEARINGS

GEODETIC NORTH
DERIVED BY G.P.S. OBSERVATION TAKEN AT THE
SOUTHWEST CORNER SECTION 4

REGISTERED
PROFESSIONAL
LAND SURVEYOR
Jason L. Hatfield
OREGON
NOVEMBER 30, 2007
JASON L. HATFIELD
#69454
EXPIRES: 6/30/2023



UNITED STATES DEPARTMENT OF AGRICULTURE FOREST SERVICE REGION 6 - NORTHEAST OREGON LAND ZONE 1550 DEWEY AVENUE, SUITE A - BAKER CITY, OREGON 97814 - (541) 523-1283			
MAP OF SURVEY A DEPENDENT RESURVEY SITUATED IN SECTIONS 2, 3, 4, 5, 10, AND 11, T.7S., R.28E., W.M., GRANT COUNTY, OREGON			
SURVEYED FOR	UMATILLA NATIONAL FOREST		
SURVEYED BY	JLH & DBL	SURVEY COMPLETED: 10/20/2022	
SCALE: 1"= 600'	DRAWN BY: JLH	SHEET 2 OF 2	