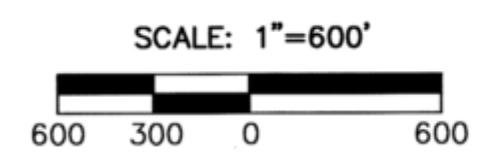


BASIS OF BEARINGS

GEODETIC NORTH
DERIVED BY G.P.S. OBSERVATION TAKEN AT THE
SOUTHWEST CORNER SECTION 4



LEGEND

- ◆ FOUND ORIGINAL G.L.O. CORNER EVIDENCE - NOT REMONUMENTED THIS SURVEY, TIED TO CORROBORATE THE POSITION OF OTHER FOUND CORNERS
- FOUND 2 1/2" GALV. IRON PIPE WITH ATTACHED 2 1/2" BRASS CAP REMONUMENTED FROM ORIGINAL EVIDENCE IN 1974 BY DUANE I. GRIFFITH, PLS - SEE CORNER MONUMENTATION RECORDS FILED IN THE GRANT COUNTY SURVEYOR'S OFFICE
- ⊙ SET A 5/8" IRON PIN GROUTED INTO BEDROCK WITH ATTACHED 3 1/2" USFS BRASS CAP MARKED AS SHOWN (PIN IS 16" LONG UNLESS OTHERWISE NOTED) SEE CORNER MONUMENTATION RECORDS FILED SEPARATELY FOR MORE DETAILS
- ⊙ SET A 2 1/2"x30" ALUMINUM PIPE WITH 3 1/2" USFS ALUMINUM CAP MARKED AS SHOWN - SEE CORNER MONUMENTATION RECORDS FILED SEPARATELY FOR MORE DETAILS
- [] RECORD BEARING AND DISTANCE FROM 1880 GENERAL LAND OFFICE SURVEY BY EDWARD W. SANDERSON, U.S. DEPUTY SURVEYOR UNDER CONTRACT NO. 368
- () RECORD BEARING AND DISTANCE FROM 1885 GENERAL LAND OFFICE SURVEY BY FRANK W. CAMPBELL, U.S. DEPUTY SURVEYOR UNDER CONTRACT NO. 521
- { } RECORD BEARING AND DISTANCE FROM DEED NO. 203051, FILED DECEMBER 22, 2000, IN THE OFFICE OF THE GRANT COUNTY CLERK
- [A-5] PLSS CORNER INDEX DESIGNATION
- //// BOUNDARY LINE POSTED THIS SURVEY USING ALUMINUM POSTS WITH NATIONAL FOREST BOUNDARY SIGNS ATTACHED
- x- FENCE

NARRATIVE

SEE NARRATIVE FILED SEPARATELY, ATTACHED HERETO AND BY THIS REFERENCE MADE A PART HEREOF

REFERENCES

GRANT COUNTY CORNER MONUMENTATION RECORDS
GRANT COUNTY DEED RECORD INSTRUMENT NO.'S 203051 AND 20101625
GENERAL LAND OFFICE RECORDS
U.S. FOREST SERVICE CORNER RECORDS
RECEIVED AND FILED
GRANT COUNTY SURVEYOR

FEB 10 2023
BY: *[Signature]*

I HEREBY CERTIFY THAT THIS SURVEY WAS PERFORMED AT THE REQUEST OF THE UMATILLA NATIONAL FOREST
Digitally signed by ERIC WATRUD
Date: 2023.02.01 10:10:14 -08'00'
FOREST SUPERVISOR DATE

REGISTERED PROFESSIONAL LAND SURVEYOR
[Signature]
OREGON
NOVEMBER 30, 2007
JASON L. HATFIELD
#69454
EXPIRES: 6/30/2023



UNITED STATES DEPARTMENT OF AGRICULTURE FOREST SERVICE REGION 6 - NORTHEAST OREGON LAND ZONE 1550 DEWEY AVENUE, SUITE A - BAKER CITY, OREGON 97814 - (541) 523-1283		
MAP OF SURVEY A DEPENDENT RESURVEY SITUATED IN SECTIONS 2, 3, 4, 5, 10, AND 11, T.7S., R.28E., W.M., GRANT COUNTY, OREGON		
SURVEYED FOR	UMATILLA NATIONAL FOREST	
SURVEYED BY	JLH & DBL	SURVEY COMPLETED: 10/20/2022
SCALE: 1"= 600'	DRAWN BY: JLH	SHEET 1 OF 2

MATCH LINE - SEE SHEET 2