

**NOTES**

1. All bearing trees are painted with red bands and have Bearing Tree (54-3) and Land Survey Monument (54-9) signs attached.
2. Record and measured distances to bearing trees are to the right side center of the tree. All new bearing trees have a MAG-NAIL and brass washer stamped "LS78556" right side center for distance measurement.
3. Bearings to new bearing trees were measured using a Warren Knight staff compass. Bearings to bearing trees at corners not needing new accessories were checked against the record with a hand compass. The project magnetic declination was determined to be 14° East using the National Geophysical Data Center website.
4. Corners controlling the National Forest Boundary, as shown herein, are posted with Property Boundary (54-2) signs, with a Land Survey Monument (54-9) sign on a nearby post.
5. Fence locations, if any, are described in the corner descriptions located on subsequent sheets of this survey.

**RECORD OF SURVEY**

BEECH CADASTRAL PHASE 1  
for  
BLUE MOUNTAIN RANGER DISTRICT  
MALHEUR NATIONAL FOREST

LOCATED WITHIN T12S, R29 & 30E,  
WILLAMETTE MERIDIAN,  
GRANT COUNTY, OREGON

**F. S. ACCEPTANCE**

Examined and approved for the U.S. Forest Service  
this 15<sup>th</sup> day of November, 2021.

ROBERT MOYERS Digitally signed by ROBERT MOYERS  
Date: 2021.11.15 09:48:34 -08'00' COR.

I certify that this survey was performed at the request  
of the Malheur National Forest Supervisor.

CRAIG TRULOCK Digitally signed by CRAIG TRULOCK  
Date: 2021.11.15 11:41:17 -08'00'  
Signature Date

**LEGEND**

- Monument of record maintained per contract. See sheets 2-9 for individual corner descriptions. (Land Corner Monumentation Records filed separately for updated corners).
- Found and positioned monument of record. See sheets 2-9 for individual corner descriptions. (Land Corner Monumentation Records filed separately for updated corners).
- ⊙ Found and remonumented monument of record. See sheets 2-9 for individual corner descriptions. (Land Corner Monumentation Records filed separately for updated corners).

===== USFS line maintained with Property Boundary signs. (not surveyed)

----- USFS NEW surveyed line Posted with Property Boundary signs.

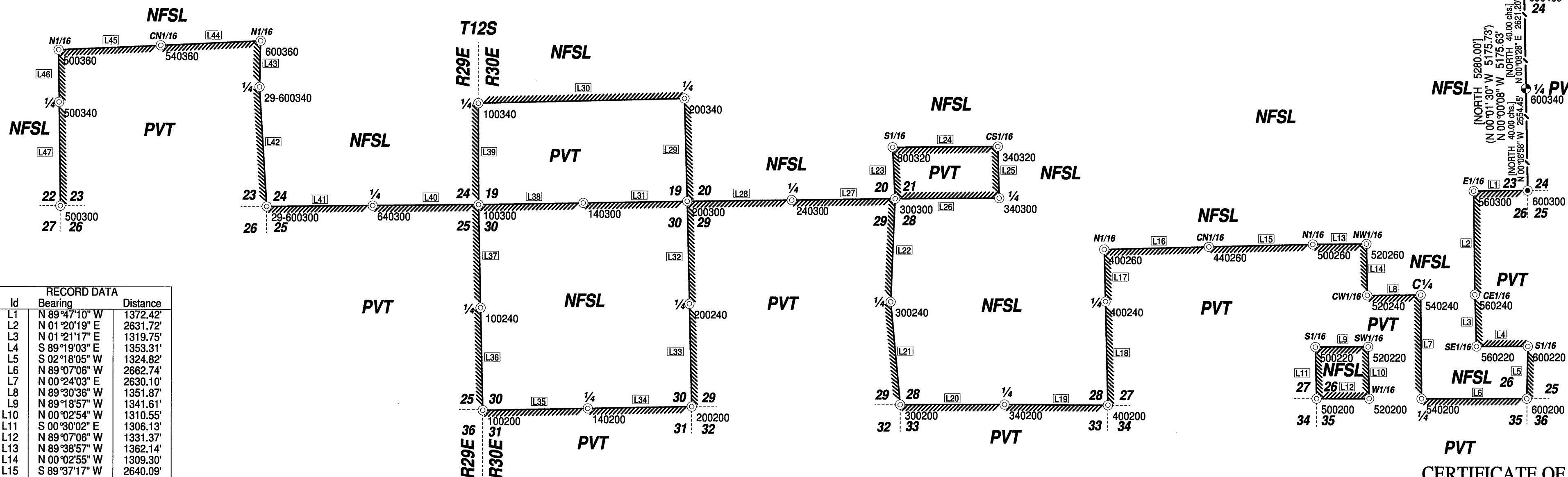
**NFSL** National Forest System Lands

**PVT** Private Lands

[100.00'] Record data from GLO.

(100.00') Record data from Ferguson, 1983.

TRUE MERIDIAN  
Scale ~ 1" = 2000'



RECORD DATA		
Id	Bearing	Distance
L1	N 89°47'10" W	1372.42'
L2	N 01°20'19" E	2631.72'
L3	N 01°21'17" E	1319.75'
L4	S 89°19'03" E	1353.31'
L5	S 02°18'05" W	1324.82'
L6	N 89°07'06" W	2662.74'
L7	N 00°24'03" E	2630.10'
L8	N 89°30'36" W	1351.87'
L9	N 89°18'57" W	1341.61'
L10	N 00°02'54" W	1310.55'
L11	S 00°30'02" E	1306.13'
L12	N 89°07'06" W	1331.37'
L13	N 89°38'57" W	1362.14'
L14	N 00°02'55" W	1309.30'
L15	S 89°37'17" W	2640.09'
L16	S 88°27'43" W	2652.59'
L17	S 00°22'46" E	1318.82'
L18	S 00°22'46" E	2637.64'
L19	N 88°40'36" W	2622.97'
L20	S 89°12'30" E	2647.25'
L21	N 04°26'06" W	2626.03'
L22	N 03°22'39" E	2614.19'
L23	S 01°48'13" E	1310.47'
L24	S 89°27'12" E	2670.99'
L25	N 00°30'47" W	1314.26'
L26	N 89°21'07" W	2641.56'
L27	N 89°55'49" W	2656.64'
L28	N 89°55'49" W	2656.64'
L29	S 00°34'33" E	2608.07'
L30	N 89°27'53" E	5245.10'
L31	S 89°51'19" W	2650.68'
L32	S 00°21'24" E	2607.99'
L33	S 00°21'24" E	2607.99'
L34	S 89°43'07" W	2650.78'
L35	S 89°43'07" W	2666.02'
L36	N 00°17'46" W	2614.32'
L37	N 00°17'46" W	2614.32'
L38	N 89°51'19" E	2660.62'
L39	N 00°47'11" E	2578.99'
L40	N 89°41'35" W	2691.48'
L41	N 89°41'35" W	2691.48'
L42	N 02°32'39" W	3049.13'
L43	N 02°22'57" E	1178.07'
L44	N 88°11'21" E	2538.35'
L45	N 88°09'12" E	2594.93'
L46	N 00°13'55" E	1319.92'
L47	N 00°13'55" E	2639.84'

**REFERENCE DATA**

Corner Records of the Grant County Surveyor  
Corner Cards of the USFS  
GLO Plat by Samuel W. Lackland, approved 3/10/1882  
GLO Plat by William R. Gradon, approved 9/29/1884  
Map of Survey No. 785 by Douglas M. Ferguson, filed 8/29/1983  
Map of Survey No. 878 by Duane I. Griffith, filed 7/15/1985  
Map of Survey No. 1185 by Douglas M. Ferguson, filed 9/27/1991  
Map of Survey No. 1525 by Douglas M. Ferguson, filed 10/22/1999  
Map of Survey No. 1645 by Jack L. Watson, filed 9/17/2002

**NARRATIVE**

This survey was performed under Malheur National Forest Contract Number 1204T020D0003, dated June 1, 2021, with Notice to Proceed dated June 7, 2021. The Contracting Officer (CO) is Stevonne Fuller. Robert Moyers, LS, USFS, is the Contracting Officers Representative (COR), and provided technical support and consultation. The purpose of this survey is to post and mark the boundaries of the Malheur National Forest in portions of Township 12 South, Range 29 & 30 East, Willamette Meridian, Grant County, Oregon. This contract does not include a Title Report or Title Research. The lines to post and mark are as delineated within said contract. This survey was performed as defined in the Department of Interior, Bureau of Land Management, Manual of Survey Instructions 2009, USFS Cadastral Survey Specifications, Oregon Revised Statutes, and followed the "Standards and Guidelines for Cadastral Surveys Using Global Positioning System Methods, Version 1.0, May 9, 2001" as adopted by the USDA Forest Service and USDI Bureau of Land Management. Lines shown as Posted were posted with 6 foot aluminum channel posts and existing T-posts were perpetuated, both with National Forest Property Boundary signs attached, at intervals less than 250 feet. This survey was conducted using GNSS referenced to the National Spatial Reference System. Accuracy estimates are at the 95% confidence level and are based on an appropriately constrained and weighted least-squares adjustment of redundant observations. The Basis of Bearing is the True Meridian as derived from GNSS observation at the corner of sections 13, 14, 23 & 24, T12S, R30E. Traverse PC software was utilized to compute true bearing (mean course convergence) and geodetic distance (at a project elevation of 4100.00 ft.)

**CERTIFICATE OF SURVEY**

I, Matthew R. Brockamp, LS 78556, State of Oregon, do hereby certify that the survey represented on this plat was performed by me or under my supervision in accordance with the laws of the State of Oregon, at the request of the U.S. Department of Agriculture, Forest Service.

REGISTERED  
PROFESSIONAL  
LAND SURVEYOR

OREGON  
MAY 20, 2015  
MATTHEW R. BROCKAMP  
78556  
Registration expires 12/31/2021

RECEIVED AND FILED  
GRANT COUNTY SURVEYOR

NOV 29 2021

BY:

**BROCKAMP LAND SURVEYING, LLC**  
www.brockamplandsurveying.com  
Matt Brockamp, PLS  
541-398-0384  
matt@brockamplandsurveying.com  
PO. Box 553  
Wallowa, OR 97885  
Full Service Land Survey Firm

**M.O.S. #2173**