

BELLWETHER CADASTRAL SURVEY, OCHOCO NATIONAL FOREST LOCATED IN
SECTIONS 7, 17 & 18, T.14S., R.26E., W.M., GRANT COUNTY, OREGON AND
SECTION 13, T.14S., R.25E., W.M., WHEELER COUNTY, OREGON
W.O. 20-5351

SURVEY FOR

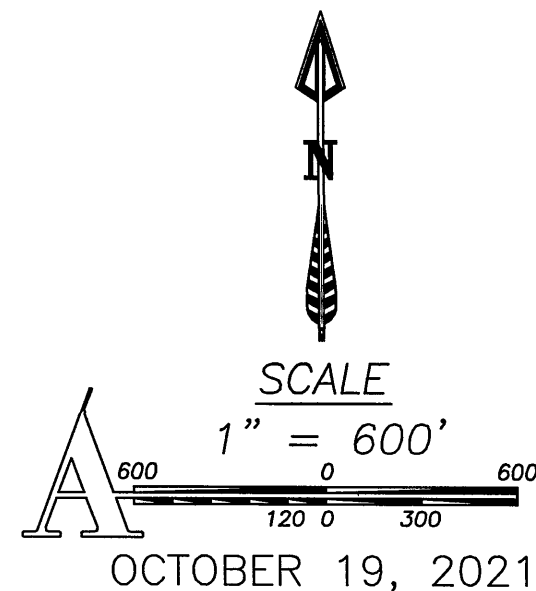
OCHOCO NATIONAL FOREST
BELLWETHER CADASTRAL SURVEY 2020
CONTRACT NO. 1204T020D0002/1204T020F0079
DATE: MAY 8, 2020
ARMSTRONG SURVEYING, INC.

SURVEY BY

ARMSTRONG SURVEYING, INC.
267 NE SECOND ST. STE. 100
PRINEVILLE, OR 97754
(541) 447-7791

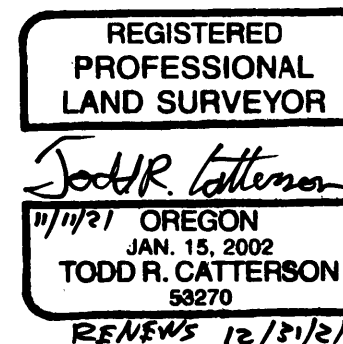
LEGEND

- MONUMENTS SET ON WILDERNESS BOUNDARY. SEE PLAT FOR MORE DETAILS
- FOUND MONUMENT. SEE PLAT FOR MORE DETAILS
- 1 () RECORD AS PER GENERAL LAND OFFICE CONTRACT NO. 395 BY MARK A. FULLERTON, DEPUTY SURVEYOR, DATED MAY 25, 1881.
- 2 () RECORD AS PER C.S. 847 BY DAVID B. ARMSTRONG, LS 1026, RECORDED NOVEMBER 23, 1984.
- WILDERNESS BOUNDARY - POSTED LINE
- AC ALUMINUM CAP
- ① CORNER IDENTIFICATION NUMBER



DESCRIPTION OF WILDERNESS BOUNDARY BETWEEN MONUMENTED ANGLE POINTS

- 1 TO 2: FOLLOWS RIDGE LINE
- 2 TO 3: 10' SOUTH OF ROAD NO. 3800660
- 3 TO 4: ASCEND TO 5400' CONTOUR
- 4 TO 5: FOLLOWS 5400' CONTOUR
- 5 TO 6: DESCEND TO MINOR DRAINAGE TO 5160' CONTOUR
- 6 TO 7: FOLLOW 5160' CONTOUR
- 7 TO 8: FOLLOW 5160' CONTOUR
- 8 TO 9: FOLLOW 5160' CONTOUR
- 9 TO 10: FOLLOW 5160' CONTOUR
- 10 TO 11: FOLLOW 5160' CONTOUR
- 11 TO 12: ACROSS A RIDGE TO 5120' CONTOUR
- 12 TO 13: FOLLOW 5120' CONTOUR



FOUND 3-1/4" AC UP 2" IN 3' STONE MOUND

FOUND BEARING TREES:

A 44" PONDEROSA PINE DEAD & STANDING BEARS N33°E, 18.0' WITH BURNED OPEN FACE.
A 21" PONDEROSA PINE BEARS S52°E, 75.7' WITH BURNED OPEN FACE.
A 28" JUNIPER BEARS S31°W, 73.7' WITH VISIBLE SCRIBING "T14SR26S13BT".
A 25" PONDEROSA PINE BEARS N55°W, 21.9' WITH BURNED OPEN FACE.
NEW BEARING TREE:
A 20" PONDEROSA PINE BEARS N68°E, 63.3' SCRIBED "T14SR26S7BT".
SEE CORNER FORM FILED CONCURRENTLY WITH THIS SURVEY

SET 2-1/2" BRASS DISK DRILLED IN BED ROCK

SCRIBED BEARING TREES:
A 22" PONDEROSA PINE BEARS S42°E, 30.7' SCRIBED "BCWAP98BT"
A 12" WHITE FIR BEARS S72°W, 51.8' SCRIBED "X" @ BREAST HEIGHT "BT"

SET 2-1/2" BRASS DISK DRILLED IN BOULDER

SCRIBED BEARING TREES:
A 16" PONDEROSA PINE BEARS S55°E, 40.6' SCRIBED "BCWAP114BT"
A 12" PONDEROSA PINE BEARS S62°W, 34.1' SCRIBED "X" @ BREAST HEIGHT "BT"

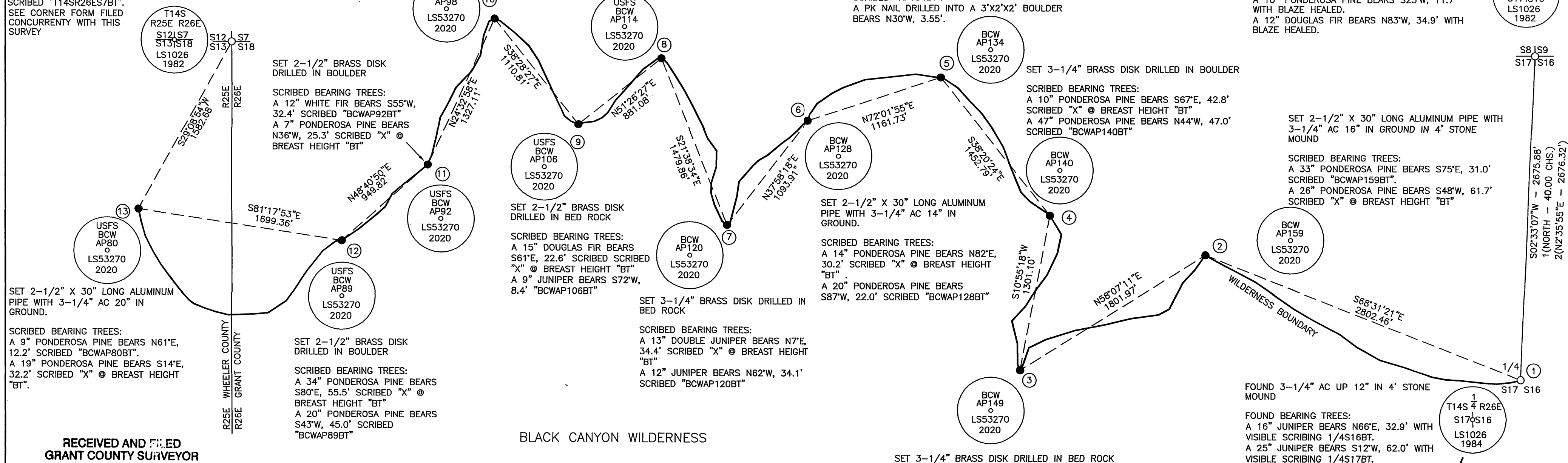
SET 5/8" X 30" LONG IRON ROD WITH 3-1/4" ALUMINUM CAP.

SCRIBED BEARING TREE/OBJECT:
A 24" PONDEROSA PINE BEARS S76°E, 35.0' SCRIBED "AP134BT".
A PK NAIL DRILLED INTO A 3'X2'X2' BOULDER BEARS N30°W, 3.55'.

FOUND 3-1/4" AC UP 6" IN 2' STONE MOUND

FOUND BEARING TREES:

A 8" DOUGLAS FIR BEARS N65°E, 26.9' WITH BLAZE HEALED.
A 36" PONDEROSA PINE BEARS S52°E, 20.5' WITH BLAZE HEALED.
A 11" PONDEROSA PINE BEARS S18°E, 33.0' WITH BLAZE HEALED.
A 10" PONDEROSA PINE BEARS S23°W, 11.7' WITH BLAZE HEALED.
A 12" DOUGLAS FIR BEARS N83°W, 34.9' WITH BLAZE HEALED.



RECEIVED AND FILED
GRANT COUNTY SURVEYOR

NOV 24 2021

BY: *[Signature]*

ARMSTRONG
surveying, inc. - established 1977
SHEET 1 OF 1
DRG. NO. 21-5351-GRANT.DWG
W.O. 21-5351