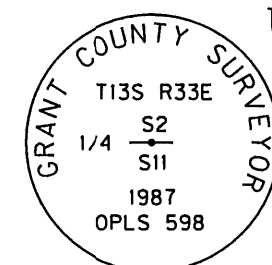
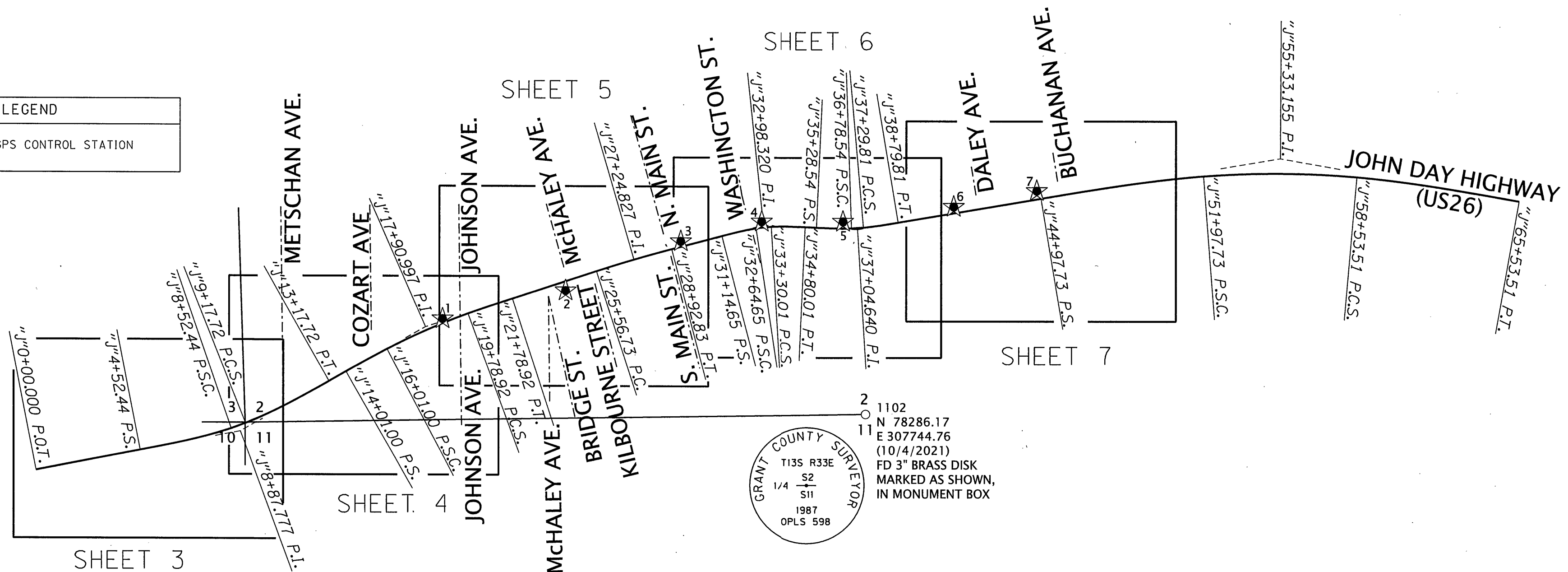
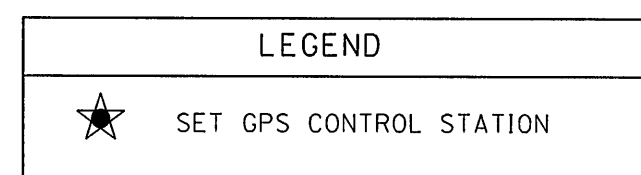


NE 1/4 SECTION 10 T13S R33E WM SE 1/4 SECTION 3 T13S R33E WM
 SW 1/4 SECTION 2 T13S R33E WM NW 1/4 SECTION 11 T13S R33E WM
 SE 1/4 SECTION 2 T13S R33E WM



CONTROL NETWORK SCHEMATIC,
 & SHEET LAYOUT
 NOT TO SCALE

CONTROL NARRATIVE

PRIMARY CONTROL WAS BROUGHT INTO THE PROJECT USING THE OREGON REAL TIME GNSS NETWORK (ORGN) TO ESTABLISH HORIZONTAL POSITIONS ON GPS CONTROL STATIONS 1 THROUGH 7 BY INCORPORATING TWO SEPARATE SESSIONS UNDER DIFFERENT SATELLITE CONSTELLATIONS. THE HORIZONTAL DATUM USED FOR THIS PROJECT IS NAD 83(2011) EPOCH 2010, OREGON COORDINATE REFERENCE SYSTEM (OCRS), DAYVILLE - PRAIRIE CITY ZONE.

THE VERTICAL DATUM ON THIS PROJECT IS NAVD88. THE PUBLISHED ELEVATION OF 3,539.24' FOR NGS MONUMENT "W34" (PID 0C0131) WAS HELD AND A CLOSED LEVEL CIRCUIT WAS RUN THROUGH CONTROL POINTS 1 THROUGH 7.

THE BASIS OF BEARINGS IS BASED UPON GPS OBSERVATIONS USING THE ORGN ON POINT 1008 AND POINT 7, RESULTING IN A BEARING AND DISTANCE OF N73°41'15"E, 3255.20' FEET.

NETWORK POINT COORDINATE TABLE

| PT ID | NORTHING | EASTING | ELEVATION | DATE | DESCRIPTION |
|-------|-----------|------------|-----------|-----------|--------------------------------------|
| 1 | 78691.543 | 305930.154 | 3542.78 | 8/19/2020 | SET 1-1/8" COPPER DISK MARKED "ODOT" |
| 2 | 78812.627 | 306455.561 | 3540.39 | 8/19/2020 | SET 1-1/8" COPPER DISK MARKED "ODOT" |
| 3 | 79023.022 | 306948.524 | 3545.51 | 8/19/2020 | SET 1-1/8" COPPER DISK MARKED "ODOT" |
| 4 | 79107.196 | 307294.932 | 3553.30 | 8/19/2020 | SET 1-1/8" COPPER DISK MARKED "ODOT" |
| 5 | 79107.337 | 307647.708 | 3559.62 | 8/19/2020 | SET 1-1/4" COPPER DISK MARKED "ODOT" |
| 6 | 79170.959 | 308120.646 | 3566.44 | 8/19/2020 | SET 1-1/8" COPPER DISK MARKED "ODOT" |
| 7 | 79238.361 | 308474.758 | 3567.97 | 8/19/2020 | SET 1-1/8" COPPER DISK MARKED "ODOT" |

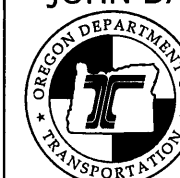
REGISTERED
 PROFESSIONAL
 LAND SURVEYOR

OREGON
 JANUARY 14, 2003
 BRET N. ELITHORP
 63148

EXPIRES: 12-31-2021

OREGON DEPARTMENT OF TRANSPORTATION

HORIZONTAL CONTROL, RECOVERY AND RETRACEMENT MAP
 JOHN DAY HIGHWAY (US26): N. COZART AVE. TO BUCHANAN AVE.
 GRANT COUNTY, OREGON



ODOT REGION 5 TECH CENTER
 3012 ISLAND AVENUE
 LA GRANDE, OR 97850 KEY NO. 21494

OCTOBER 14, 2021
 NO SCALE
 SHEET 2 OF 7