

T 7 S R 29 E

S 23 S 24  
S 26 S 25

Found Corner in Poor Condition,  
Restored With Brass Cap Monument  
& New Bearing Trees

REGISTERED  
OREGON  
LAND SURVEYOR

*Douglas M. Ferguson*

JULY 12, 1968  
DOUGLAS M. FERGUSON  
848

### REFERENCE MATERIAL

Book 83, Page 571 Deed Records  
Filed in the Office of the Grant County Clerk  
(County Road Right of Way)

### LEGEND

- Set 5/8" x 30" Steel Pin  
● Remonument Section Corner  
— x — x — x — Fence  
— — — — Grant Co. Road No. 15 Center Line  
( ) Record Bearing

### BAGETT-GRIFFITH-FERGUSON

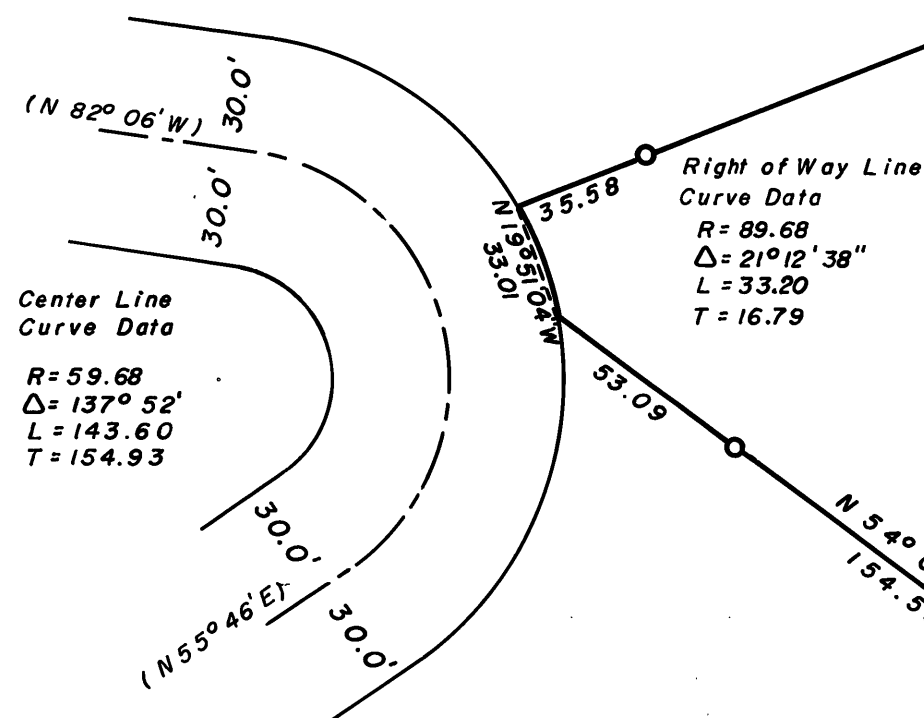
John Day, Oregon

TRACT OF LAND IN THE  
SOUTH 1/2 OF SECTION 25  
T 7 S R 29 E W.M.

GRANT COUNTY OREGON

SURVEYED FOR	ORLEY BROCK JR.	
SURVEYED BY	DMF & RDB	March 1971
Scale: 1" = 50'	Drawn by: DMF	March 1971

BEARING BASE  
BY SOLAR OBSERVATIONS



RECEIVED AND  
FILED

*John L. Latta*  
Grant County Clerk

Deputy