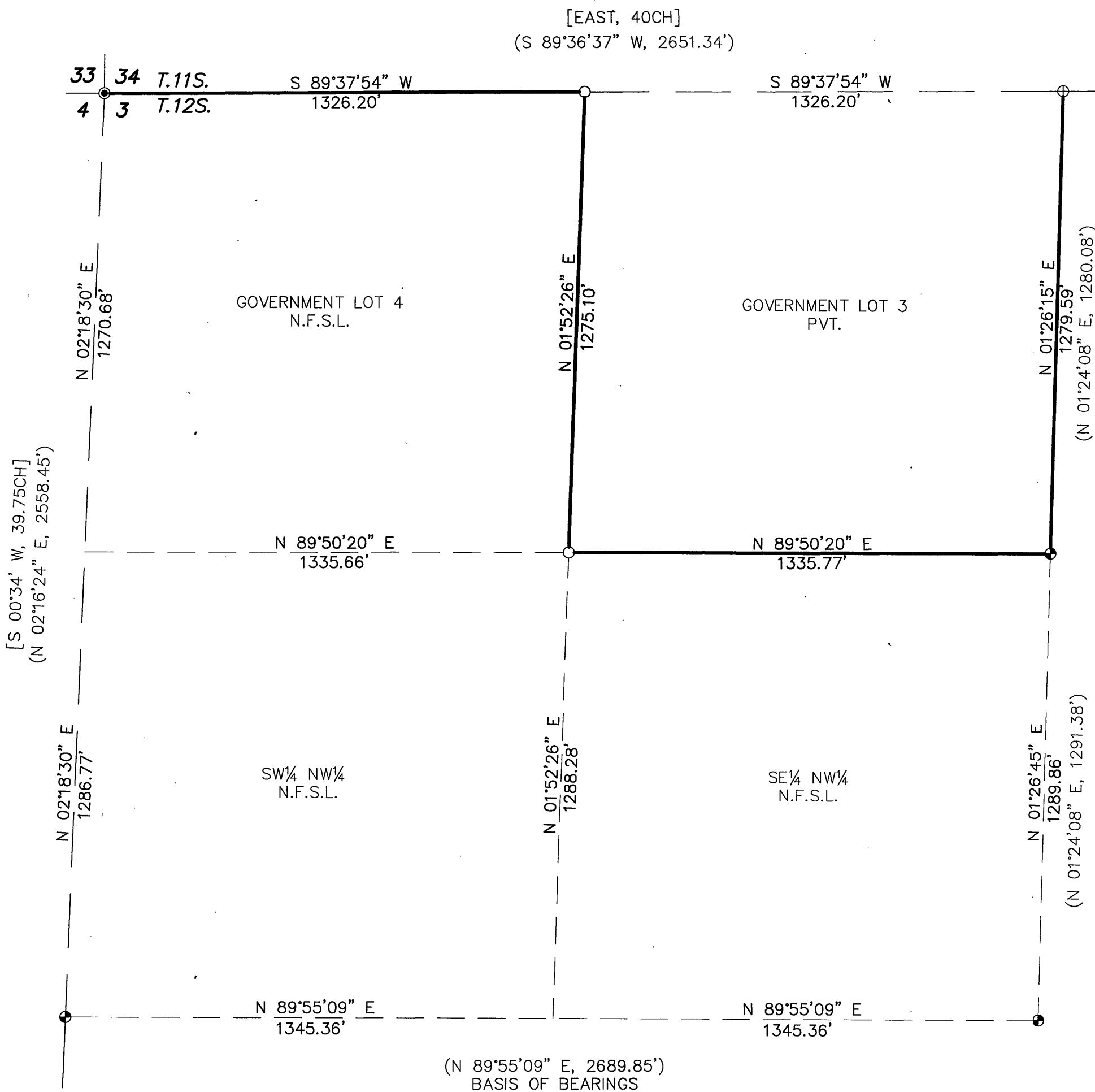
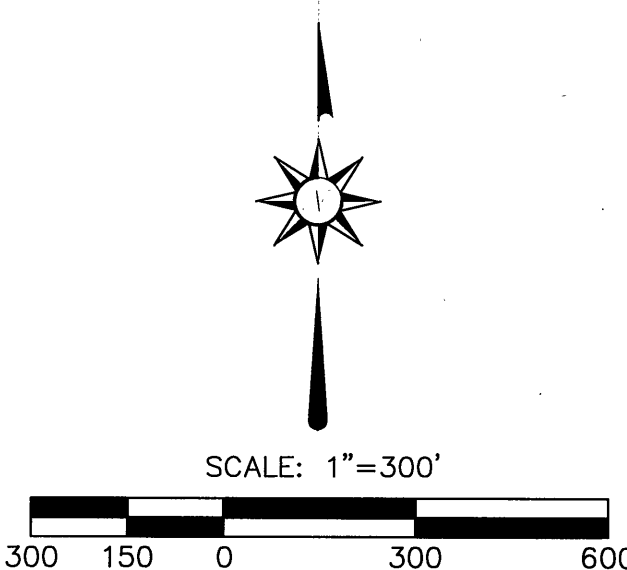


DEPENDENT RESURVEY AND SUBDIVISION
OF THE NORTHWEST ¼ OF SECTION 3,
TOWNSHIP 12 SOUTH, RANGE 30 EAST
WILLAMETTE MERIDIAN
GRANT COUNTY, OREGON



NARRATIVE

THE PURPOSE OF THIS SURVEY IS TO LOCATE, MONUMENT, AND MARK THE BOUNDARIES OF NATIONAL FOREST SYSTEM LANDS LOCATED IN SECTION 3, TOWNSHIP 12 SOUTH, RANGE 30 EAST, WILLAMETTE MERIDIAN, GRANT COUNTY, OREGON.

THIS SURVEY WAS CONDUCTED USING GLOBAL POSITIONING SYSTEM EQUIPMENT. A DUAL BASE SYSTEM WAS INCORPORATED FOR SURVEY CONTROL AND MONUMENTATION OF THE CORNER POSITIONS USING REDUNDANT MEASUREMENTS. ALL GPS DATA WERE DOWNLOADED INTO TRIMBLE BUSINESS CENTER SOFTWARE AND CORRECTED USING OPUS. THE OPUS SOLUTION REPORTED A COMBINED SCALE FACTOR OF 1.00028740. A SECONDARY CONTROL POINT WAS TIED TO THE PRIMARY CONTROL POINT FOR THE DUAL BASE STATION SETUP AND VERIFIED USING OPUS.

THE SECTION SUBDIVISION SHOWN HEREON WAS PERFORMED IN ACCORDANCE WITH THE PROCEDURES SET FORTH IN THE 2009 BLM MANUAL OF SURVEYING INSTRUCTIONS.

FOR MONUMENTATION RECORDS SEE THE CERTIFIED RECORD OF LAND CORNER MONUMENTATION SHEETS FILED SEPARATELY IN THE GRANT COUNTY SURVEYOR'S OFFICE.

THE NORTH LINE OF TOWNSHIP 12 SOUTH, RANGE 30 EAST WAS ORIGINALLY SURVEYED BY WILLIAM BYERS, CONTRACT NO. 185, APPROVED ON SEPTEMBER 9, 1873.

THE ORIGINAL SUBDIVISION OF TOWNSHIP 12 SOUTH, RANGE 30 EAST WAS PERFORMED BY SAMUEL W. LACKLAND, CONTRACT NO. 415, FROM SEPTEMBER 17 THRU SEPTEMBER 28, 1881 AND APPROVED ON MARCH 10, 1882.

THE NORTHWEST CORNER OF SECTION 3 WAS REMONUMENTED BY HOWARD L. PERRY, PLS 1294 AS SHOWN ON MAP OF SURVEY OF BLACK BUTTE-DAVIS CREEK CADASTRAL SURVEY FOR THE UNITED STATES FOREST SERVICE CONTRACT NO. 53-04HI-I-8294N FROM MAY THRU SEPTEMBER, 1981 AND RECORDED ON AUGUST 6, 1982 AS M.O.S. #724.

SECTION 3 WAS RETRACED AND SUBDIVIDED BY DOUGLAS FERGUSON, PLS #848 AS SHOWN ON MAP OF SURVEY OF HENCOCK CADASTRAL SURVEY FOR THE UNITED STATES FOREST SERVICE CONTRACT NO. 53-04HI-I-8598N FROM OCTOBER 1981 THRU MAY 1983 AND RECORDED ON AUGUST 28, 1983 AS M.O.S. #785.

THE NORTH ¼ CORNER OF SECTION 3 LIES UNDER THE PAVED SURFACE OF HIGHWAY 395. THE ACTUAL MONUMENT LOCATION WAS NOT FOUND BUT WAS ESTABLISHED FROM THE FOUND ACCESSORIES OF RECORD.

THE NATIONAL FOREST BOUNDARY SHOWN HEREON HAS MARKED WITH ALUMINUM POSTS AND NATIONAL FOREST BOUNDARY SIGNS. EACH MONUMENT SET HAS GUARD POSTS WITH LAND SURVEY MONUMENT SIGNS ATTACHED.

I, ROBERT C. MOYERS, A PROFESSIONAL SURVEYOR IN THE STATE OF OREGON, HEREBY CERTIFY THAT THIS PLAT AND NOTES HEREON ARE A TRUE AND CORRECT REPRESENTATION OF A SURVEY I CONDUCTED IN JULY, 2019 AT THE REQUEST OF THE MALHEUR NATIONAL FOREST, IN ACCORDANCE WITH THE STATUTES OF THE STATE OF OREGON AND THE BUREAU OF LAND MANAGEMENT'S 2009 MANUAL OF SURVEYING INSTRUCTIONS.

SIGNATURE _____ DATE _____
ROBERT C. MOYERS
WALLOWA-WHITMAN NATIONAL FOREST
1550 DEWEY AVE SUITE A
BAKER CITY, OR 97814
541-523-1280

LEGEND

- FOUND ALUMINUM CAP, PLS 848
- FOUND ALUMINUM CAP, PLS 1294
- ⊕ FOUND BEARING TREES AND REFERENCE MONUMENT, PLS 848
- SET 3/4" ALUMINUM CAP ON 3"x30" PIPE WITH STANDARD 1/8" CORNER MARKINGS, PLS 91693, 2019
- NATIONAL FOREST BOUNDARY LINE
- SECTION LINE
- - - SECTION SUBDIVISION LINE
- N.F.S.L. NATIONAL FOREST SYSTEM LANDS
- PVT. PRIVATE LANDS
- () RECORD DIMENSIONS, PLS 848
- [] RECORD G.L.O DIMENSIONS

REFERENCES

- WARRANTY DEED TO UNITED STATES OF AMERICA RECORDED ON DECEMBER 29, 2000 AS INSTRUMENT NO. 203111 IN THE RECORDS OF DEEDS, GRANT COUNTY, OREGON.
- BLACK BUTTE-DAVIS CREEK CADASTRAL SURVEY PLAT BY PLS 1294, RECORDED ON AUGUST 6, 1982 AS M.O.S. #724.
- HENCOCK CADASTRAL SURVEY PLAT BY PLS 848, RECORDED ON AUGUST 29, 1983 AS M.O.S. #785.
- MAP OF SURVEY, RE-SUBDIVIDE SECTION 4 BY PLS 848, RECORDED ON DECEMBER 20, 1985 AS M.O.S. #902.
- GENERAL LAND OFFICE SURVEY NOTES OF THE NORTH BOUNDARY OF TOWNSHIP 12 SOUTH, RANGE 30 EAST, WILLAMETTE MERIDIAN, APPROVED SEPTEMBER 18, 1873
- GENERAL LAND OFFICE SURVEY OF TOWNSHIP 12 SOUTH, RANGE 30 EAST, WILLAMETTE MERIDIAN, APPROVED MARCH 10, 1882.

BASIS OF BEARINGS

THE BASIS OF BEARINGS IS THE WEST ONE-HALF OF THE EAST-WEST CENTERLINE OF SECTION 3 (N 89°55'09" E), TOWNSHIP 12 SOUTH, RANGE 30 EAST, WILLAMETTE MERIDIAN, OREGON AS SHOWN ON THE MAP OF SURVEY OF HENCOCK CADASTRAL SURVEY BY PLS 848, RECORDED ON AUGUST 29, 1982 AS M.O.S. 785.

DISTANCES SHOWN HEREON ARE GROUND DISTANCES.

RECEIVED AND FILED
GRANT COUNTY SURVEYOR

OCT 14 2019

BY: *[Signature]*

I CERTIFY THAT THIS SURVEY WAS PERFORMED AT THE REQUEST OF THE MALHEUR NATIONAL FOREST.
FOREST SUPERVISOR _____ DATE 10/11/19

REGISTERED
PROFESSIONAL
LAND SURVEYOR

[Signature]

OREGON
SEPTEMBER 11, 2018
ROBERT C. MOYERS
91693

RENEWS 12/31/2020

UNITED STATES DEPARTMENT OF AGRICULTURE
FOREST SERVICE
REGION 6 - MALHEUR NATIONAL FOREST

SURVEY FOR THE MALHEUR NATIONAL FOREST
LOCATED IN SECTION 3
TOWNSHIP 12 SOUTH, RANGE 30 EAST
WILLAMETTE MERIDIAN
GRANT COUNTY, OREGON

SURVEY COMPLETED JULY 30, 2019

DRAWN BY: RCM

SCALE: 1"=300'

SHEET 1 of 1