



BASIS OF BEARINGS

GEODETIC NORTH
FROM A GPS OBSERVATION
TAKEN AT THE NE CORNER SECTION 13

REGISTERED
PROFESSIONAL
LAND SURVEYOR

[Signature]
OREGON
JULY 9, 2002
MICHAEL C. SPRINGER
#70918

EXPIRES: 6/30/2020
GRANT COUNTY SURVEYOR

RECEIVED AND FILED
GRANT COUNTY SURVEYOR

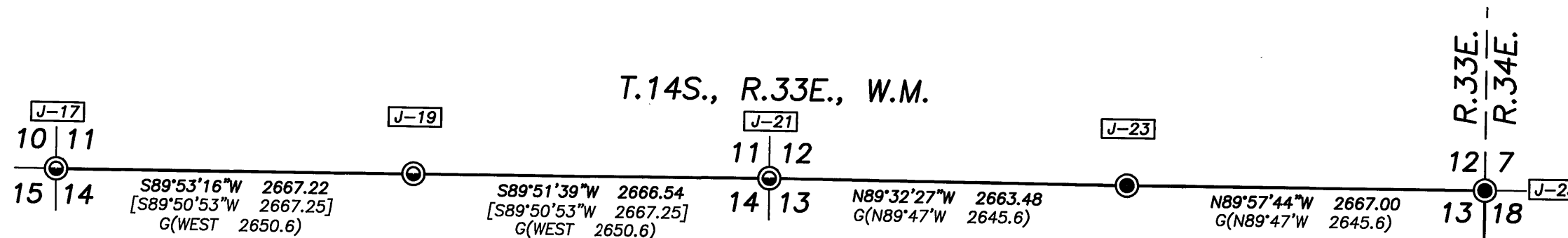
DEC 11 2018

BY: *[Signature]*

GRANT COUNTY SURVEYOR
217 N. CANYON BLVD. JOHN DAY, OREGON
541-575-1251

MAP OF SURVEY
SECTIONS 13 AND 14, T.14S., R.33E., W.M.,
GRANT COUNTY, OREGON

SURVEYED FOR	GRANT COUNTY OREGON	
SURVEYED BY	MCS & MRT	11/28/2018
SCALE: 1"=1000'	DRAWN BY: MCS	



NARRATIVE

THIS MAP WAS PREPARED FOR THE PURPOSE OF SHOWING THE RELATIONSHIP BETWEEN SECTION CORNER AND 1/4 SECTION CORNER MONUMENTS ALONG THE NORTH LINE OF SECTION 14 AND THE NORTH AND EAST LINES OF SECTION 13, T.14S., R.33E., W.M.

THE GENERAL LAND OFFICE ORIGINALLY SURVEYED THE NORTH HALF OF THIS TOWNSHIP IN JULY 1880. THE SURVEY WAS CONDUCTED BY U.S. DEPUTY SURVEYOR BAMFORD ROBB UNDER CONTRACT NO. 357. DURING HIS SURVEY MR. ROBB, IN PART, ESTABLISHED MONUMENTS ALONG THE EAST LINE OF THIS TOWNSHIP AND ALSO SUBDIVIDED THE NORTH HALF OF THE TOWNSHIP. IN 1982 DAVID SCOTT, UNDER CONTRACT WITH THE U.S. FOREST SERVICE CONDUCTED A DEPENDENT RESURVEY AND SUBDIVISION OF SECTIONS 14 AND 15. HIS MAP IS RECORDED AS SURVEY NO. 726. MR. SCOTT ALSO REMONUMENTED THE N1/4 CORNER, NE SECTION CORNER, E1/4 CORNER AND SE SECTION CORNER OF SECTION 13. THE REMONUMENTED CORNERS OF SECTION 13 ARE NOT PART OF A RECORDED MAP, BUT HE DID RECORD A "CERTIFIED RECORD OF LAND CORNER MONUMENTATION" FOR EACH CORNER.

I FOUND ALL OF THE CORNER MONUMENTS SHOWN HEREON IN GOOD CONDITION, BUT THE CORNER ACCESSORIES VARY AS TO THEIR CONDITION. IN MANY CASES THE BEARING TREES HAVE BEEN DESTROYED DUE TO THE 2015 CANYON CREEK FIRE. IT IS MY INTENT TO REVISIT THESE CORNERS IN THE NEAR FUTURE TO SET NEW ACCESSORIES, BUT WINTER WEATHER HAS DELAYED THAT PORTION OF THIS PROJECT.

THE DISTANCES SHOWN HEREON ARE GROUND DISTANCES, BUT I HAVE ALSO GENERATED STATE PLANE COORDINATES FOR EACH CORNER. THE COORDINATES ARE OBTAINED BY GPS OBSERVATIONS AT EACH CORNER AND AN OPUS SOLUTION.

STATE PLANE COORDINATES (3601 ORN)

REFERENCE DATUM: NAD83(2011)

COR.	NORTHING	EASTING	ELLIP. HT.
J-17	258951.74	8665361.01	4587.9
J-19	259016.76	8668026.81	4748.5
J-21	259083.03	8670691.90	4888.5
J-23	259121.43	8673354.48	4936.8
J-25	259179.48	8676020.21	5016.0
L-25	256525.10	8676064.71	4912.0
N-25	253874.73	8676138.57	5361.5

LEGEND

- FOUND 2 1/2" ALUMINUM PIPE WITH ATTACHED 3 1/4" ALUMINUM CAP MARKED RLS 1844 - 1981 FROM SURVEY NO. 726
- FOUND 2 1/2" ALUMINUM PIPE WITH ATTACHED 3 1/4" ALUMINUM CAP MARKED RLS 1844 - 1981
- G() GLO RECORD BEARING AND DISTANCE
- [] RECORD BEARING AND DISTANCE FROM SURVEY NO. 726
- J-17 CORNER INDEX

REFERENCES

RECORD MAP OF SURVEY NO. 726
GENERAL LAND OFFICE FIELD NOTES
GRANT COUNTY CORNER RESTORATION RECORDS