

BASIS OF BEARINGS

RECORD MAP OF SURVEY NO. 1124
AS SHOWN

NARRATIVE

THIS SURVEY WAS PREPARED AT THE REQUEST OF BRYAN NELSON, OWNER OF THE LAND DESCRIBED IN DEED INSTRUMENT NO. 20082666. THE PURPOSE OF THIS SURVEY WAS TO SUBDIVIDE SECTION 10, T.16S., R.31E., W.M. AND TO EITHER LOCATE OR ESTABLISH THE CORNERS OF THE NE1/4 OF SAID SECTION 10.

SECTION 10 WAS ORIGINALLY SURVEYED BY GENERAL LAND OFFICE U.S. DEPUTY SURVEYOR S.W. LACKLAND IN 1880 UNDER CONTRACT NO. 357. IN 1983, ROBERT BAGETT, PLS, GRANT COUNTY SURVEYOR, REESTABLISHED THE NW CORNER OF SECTION 10 FROM AN ORIGINAL GLO BEARING TREE. THE NORTH, EAST AND SOUTH LINES OF SECTION 10 WERE SURVEYED BY DAVID ARMSTRONG, PLS IN 1989 AS SHOWN ON RECORD MAP OF SURVEY NO. 1124. AS PART OF HIS SURVEY, MR. ARMSTRONG MONUMENTED THE N1/4 CORNER, NE SECTION CORNER, N1/16 CORNER ON THE EAST LINE OF SECTION 10, E1/4 CORNER, SE SECTION CORNER AND THE SW SECTION CORNER OF SECTION 10.

I BEGAN THIS SURVEY BY LOCATING THE CONTROLLING SECTION AND 1/4 SECTION CORNERS. I DID NOT FIND ORIGINAL GLO EVIDENCE AT THE S1/4 CORNER AND W1/4 CORNER OF SECTION 10. IN ORDER TO REMAIN CONSISTENT WITH ARMSTRONG'S PLACEMENT OF THE N1/4 CORNER, I CALCULATED THE POSITION OF THE S1/4 CORNER AT THE MIDPOINT BETWEEN FOUND MONUMENTS AT THE SE AND SW SECTION CORNERS. I PLACED THE C1/4 CORNER AT THE INTERSECTION OF OPPOSITE 1/4 CORNERS PER THE 2009 BLM MANUAL OF SURVEYING INSTRUCTIONS. SEE THE CORNER REPORT FILED SEPARATELY FOR ADDITIONAL DETAILS ON THE C1/4 AND THE ACCESSORIES SET DURING THIS SURVEY.

AT THE REQUEST OF MR. NELSON, I POSTED THE WEST, SOUTH AND A PORTION OF THE EAST LINES OF THE NE1/4 SECTION 10 WITH STEEL "U" POSTS AND FLAGGING.

REFERENCES

RECORD MAP OF SURVEY NO. 1124
GRANT COUNTY SURVEYOR CORNER RECORDS
GENERAL LAND OFFICE FIELD NOTES
DEED RECORD INSTRUMENT NO. 20082666

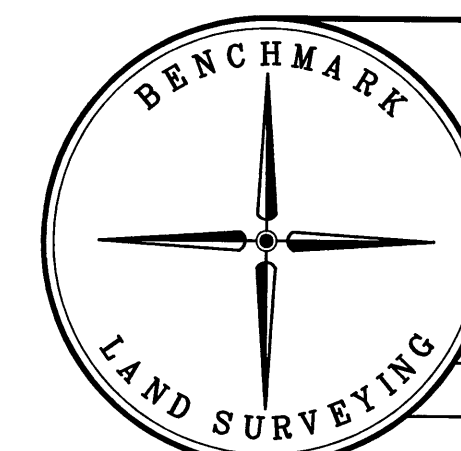
LEGEND

- FOUND 2 1/2" ALUMINUM PIPE AND CAP STAMPED WITH APPROPRIATE CORNER INFORMATION AND LS 1026 - 1989, FROM SURVEY NO. 1124
- ⊙ FOUND 1 1/2" GALV. IRON PIPE WITH ATTACHED GRANT COUNTY SURVEYOR BRASS CAP STAMPED WITH APPROPRIATE CORNER INFORMATION AND 1983 - OPLS 598
- SET 5/8"x30" IRON PIN WITH ATTACHED 3" ALUMINUM CAP STAMPED BENCHMARK SURVEYING, AND WITH APPROPRIATE CORNER DESIGNATIONS
- G() GENERAL LAND OFFICE RECORD BEARING AND DISTANCE
- [] RECORD BEARING AND DISTANCE FROM SURVEY NO. 1124

REGISTERED
PROFESSIONAL
LAND SURVEYOR

OREGON
JULY 9, 2002
MICHAEL C. SPRINGER
#70918
EXPIRES: 6/30/2020

RECEIVED AND FILED
GRANT COUNTY SURVEYOR
NOV 6 2018



BENCHMARK LAND SURVEYING
217 N. CANYON BLVD. JOHN DAY, OREGON
1207 DEWEY AVE., BAKER CITY, OREGON
541-575-1251 ~ 541-523-5852

MAP OF SURVEY SUBDIVISION OF SECTION 10 T.16S., R.31E., W.M., GRANT COUNTY, OREGON		
SURVEYED FOR	BRYAN NELSON	
SURVEYED BY	MCS	11/1/2018
SCALE: 1"=500'	DRAWN BY: MCS	