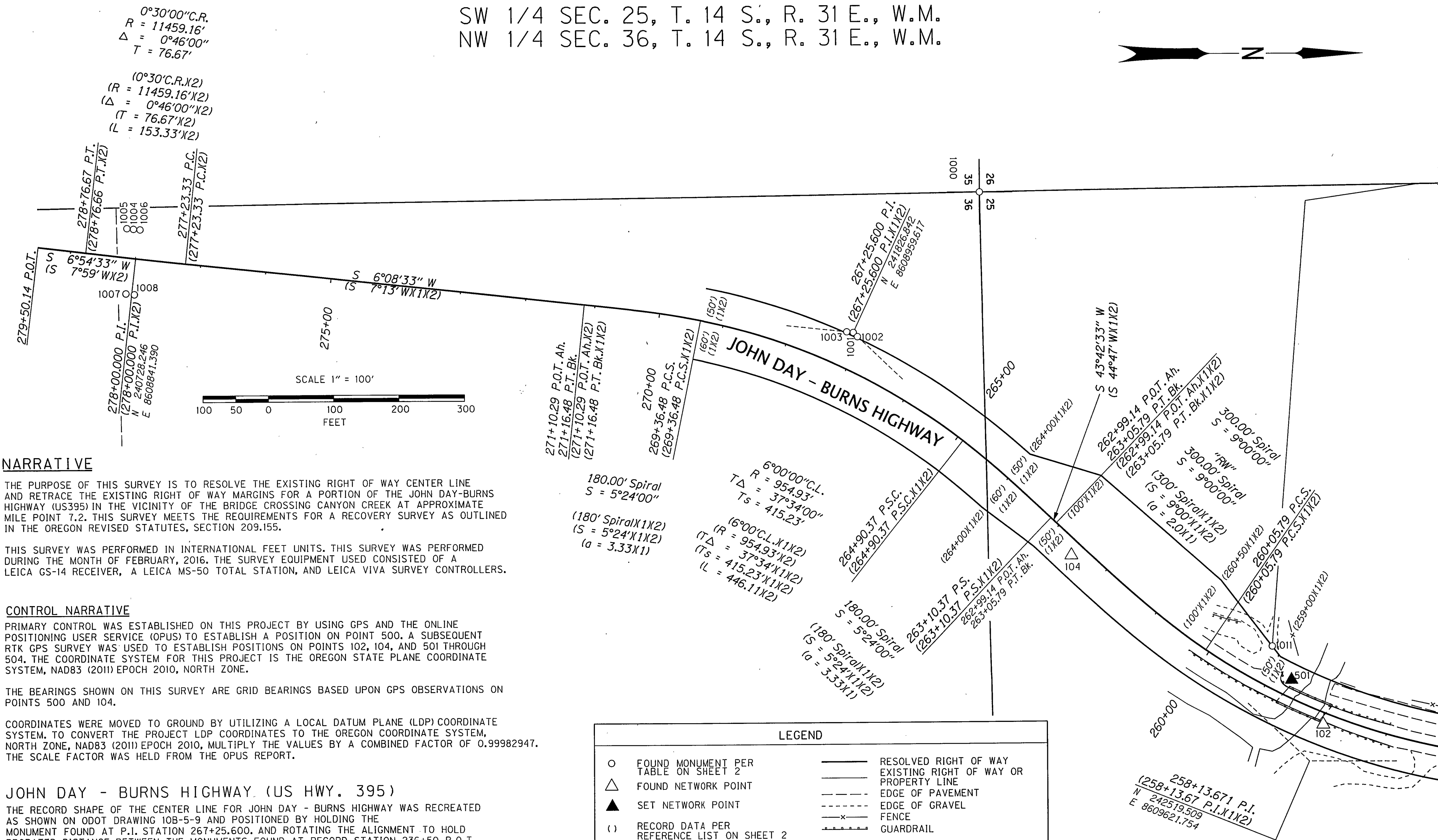
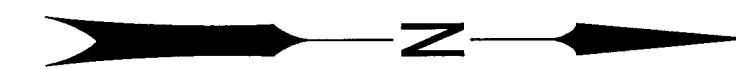


SW 1/4 SEC. 25, T. 14 S., R. 31 E., W.M.
NW 1/4 SEC. 36, T. 14 S., R. 31 E., W.M.



NARRATIVE

THE PURPOSE OF THIS SURVEY IS TO RESOLVE THE EXISTING RIGHT OF WAY CENTER LINE AND RETRACE THE EXISTING RIGHT OF WAY MARGINS FOR A PORTION OF THE JOHN DAY-BURNS HIGHWAY (US395) IN THE VICINITY OF THE BRIDGE CROSSING CANYON CREEK AT APPROXIMATE MILE POINT 7.2. THIS SURVEY MEETS THE REQUIREMENTS FOR A RECOVERY SURVEY AS OUTLINED IN THE OREGON REVISED STATUTES, SECTION 209.155.

THIS SURVEY WAS PERFORMED IN INTERNATIONAL FEET UNITS. THIS SURVEY WAS PERFORMED DURING THE MONTH OF FEBRUARY, 2016. THE SURVEY EQUIPMENT USED CONSISTED OF A LEICA GS-14 RECEIVER, A LEICA MS-50 TOTAL STATION, AND LEICA VIVA SURVEY CONTROLLERS.

CONTROL NARRATIVE

PRIMARY CONTROL WAS ESTABLISHED ON THIS PROJECT BY USING GPS AND THE ONLINE POSITIONING USER SERVICE (OPUS) TO ESTABLISH A POSITION ON POINT 500. A SUBSEQUENT RTK GPS SURVEY WAS USED TO ESTABLISH POSITIONS ON POINTS 102, 104, AND 501 THROUGH 504. THE COORDINATE SYSTEM FOR THIS PROJECT IS THE OREGON STATE PLANE COORDINATE SYSTEM, NAD83 (2011) EPOCH 2010, NORTH ZONE.

THE BEARINGS SHOWN ON THIS SURVEY ARE GRID BEARINGS BASED UPON GPS OBSERVATIONS ON POINTS 500 AND 104.

COORDINATES WERE MOVED TO GROUND BY UTILIZING A LOCAL DATUM PLANE (LDP) COORDINATE SYSTEM. TO CONVERT THE PROJECT LDP COORDINATES TO THE OREGON COORDINATE SYSTEM, NORTH ZONE, NAD83 (2011) EPOCH 2010, MULTIPLY THE VALUES BY A COMBINED FACTOR OF 0.99982947. THE SCALE FACTOR WAS HELD FROM THE OPUS REPORT.

JOHN DAY - BURNS HIGHWAY (US HWY. 395)

THE RECORD SHAPE OF THE CENTER LINE FOR JOHN DAY - BURNS HIGHWAY WAS RECREATED AS SHOWN ON ODOT DRAWING 10B-5-9 AND POSITIONED BY HOLDING THE MONUMENT FOUND AT P.I. STATION 267+25.600. AND ROTATING THE ALIGNMENT TO HOLD PRORATED DISTANCE BETWEEN THE MONUMENTS FOUND AT RECORD STATION 236+50 P.O.T. STATIONING WAS HELD AT SAID STATION 267+25.600 P.I. THE RIGHT OF WAY ALIGNMENT SHOWN ON ODOT DRAWING 8B-18-25 WAS ALSO RECREATED AND POSITIONED BY HOLDING THE GEOMETRIC RELATIONSHIP WITH THE MONUMENTED ALIGNMENT SHOWN ON ODOT DRAWING 10B-5-9.

THE RIGHT OF WAY MARGINS WERE ESTABLISHED BY HOLDING THE RIGHT OF WAY WIDTHS SHOWN ON SAID ODOT DRAWINGS 8B-18-25 AND 10B-5-9.

NETWORK POINT COORDINATE TABLE

PT ID	LDP NORTHING	LDP EASTING	DATE	DESCRIPTION
102	242540.85	8609565.93	2/08/2016	FOUND 5/8" IRON ROD WITH 1-1/2" ALUMINUM CAP MARKED APA WA 35140 OR 2537 102"
104	242157.85	8609304.62	2/08/2016	FOUND 5/8" IRON ROD WITH 1-1/2" ALUMINUM CAP MARKED APA WA 35140 OR 2537 104"
500	242769.21	8609564.85	2/08/2016	SET 5/8" IRON ROD WITH 1-1/2" ALUMINUM CAP MARKED "OREGON DEPT OF TRANS"
501	242492.95	8609496.69	2/08/2016	SET HUB WITH PUNCH MARK

RECEIVED AND FILED
GRANT COUNTY, OREGON

NOV 21 2017

REGISTERED
PROFESSIONAL
LAND SURVEYOR

OREGON
JAN. 14, 2003
BRET N. ELITHORP
63148

RENEWAL: DEC. 31, 2017

OREGON DEPARTMENT OF TRANSPORTATION

HORIZONTAL CONTROL, RECOVERY AND RETRACEMENT MAP

US395: CANYON CREEK FLOOD MITIGATION

JOHN DAY - BURNS HIGHWAY (US 395)

GRANT COUNTY, OR



FOR ODOT REGION 5
3012 ISLAND AVENUE
LA GRANDE, OR 97850

NOVEMBER 15, 2017

SCALE: 1" = 100'
SHEET 1 OF 2