

BASIS OF BEARINGS

GEODETIC NORTH
DETERMINED BY GPS OBSERVATION
NEAR THE SW CORNER OF SECTION 36, T.8S., R.27E.

NARRATIVE

THIS SURVEY WAS PERFORMED AT THE REQUEST OF MIKE COLVIN ON BEHALF OF NORTH RIVER RANCH LLC, WITH THE PURPOSE OF MONUMENTING A PROPOSED PROPERTY LINE ADJUSTMENT BETWEEN LANDS OWNED BY NORTH RIVER RANCH LLC AND R DOUBLE D, LLC, AS SHOWN HEREON.

THE RECORD DIVISION LINE BETWEEN THE TWO PROPERTIES IS THE EAST LINE OF THE W1/2SW1/4NW1/4 AND THE EAST LINE OF THE NW1/4NW1/4SW1/4 OF SECTION 2 IN T.9S., R.27E. TO DETERMINE THESE LINES WOULD REQUIRE A DEPENDENT RESURVEY AND SUBDIVISION OF SECTION 2. IN RESEARCHING THE COUNTY SURVEYOR RECORDS, I FOUND THAT RECORD RETRACEMENT SURVEYS DONE WITHIN T.9S., R.27E. ARE MINIMAL, AND THAT WHERE CORNERS HAVE BEEN FOUND ALONG THE TOWNSHIP LINE, THERE IS A 500 TO 700 FOOT DISCREPANCY BETWEEN STANDARD CORNERS IN T.8S., R.27E. AND CLOSING CORNERS IN T.9S., R.27E. DUE TO THESE FINDINGS, I DID NOT ATTEMPT TO LOCATE THE RECORD DIVISION LINES BETWEEN THE SUBJECT PROPERTIES. THE 40 LINES AND 1/16 LINES AS SHOWN HEREON ARE APPROXIMATE AND ARE BASED ON THE OREGON DEPARTMENT OF REVENUE CARTOGRAPHER'S MAPPED LOCATION, AND AS SUCH, THE AREAS REPRESENTED HEREON ARE ALSO APPROXIMATE. FOR THE PURPOSE OF THIS SURVEY, THE LOCATIONS OF THESE LINES ARE SOMEWHAT IRRELEVANT AS IT IS THE SOLE INTENT OF THE LANDOWNERS TO ADJUST THE LOCATION OF THEIR COMMON BOUNDARY TO A DEFINITE LOCATION ON THE GROUND.

I RECOVERED THE SOUTHWEST CORNER OF SECTION 36, T.8S., R.27E., WHICH IS MONUMENTED WITH A GRANT COUNTY SURVEYOR BRASS CAP DATED 1973. I DETERMINED THE SOUTH RIGHT OF WAY LINE OF THE STATE HIGHWAY AT 40 FEET PERPENDICULAR FROM THE EXISTING HIGHWAY CENTERLINE AS LOCATED ON THE GROUND. NEW MONUMENTS WERE SET AT LOCATIONS APPROVED BY THE LANDOWNERS.

LEGEND

- SET 5/8"X30" IRON PIN WITH ATTACHED YELLOW PLASTIC CAP MARKED BENCHMARK SURVEYING
- () RECORD BEARING AND DISTANCE
- X—X FENCE LINE

REFERENCES

DEED RECORD INSTRUMENT NO.'S 20040139 & 20040142
GRANT COUNTY SURVEYOR CORNER MONUMENTATION RECORDS
OREGON STATE HIGHWAY DIVISION DRAWING NO. 6B-20-5
DEED BOOK 49 PAGE 300

RECEIVED AND FILED
GRANT COUNTY SURVEYOR

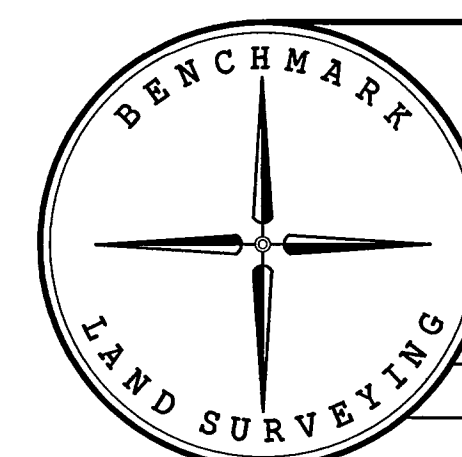
MAY 7 2015

BY:

REGISTERED
PROFESSIONAL
LAND SURVEYOR

OREGON
NOVEMBER 30, 2007
JASON L. HATFIELD
#69454

EXPIRES: 6/30/2015



BENCHMARK LAND SURVEYING
217 N. CANYON BLVD. JOHN DAY, OREGON
2101 MAIN STREET, STE 223 BAKER CITY, OREGON
541-575-1251 ~ 800-699-0516

MAP OF SURVEY
PROPOSED PROPERTY LINE ADJUSTMENT SITUATED IN
THE NW1/4 AND THE SW1/4 OF SECTION 2, T.9S.,
R.27E., W.M., GRANT COUNTY, OREGON

SURVEYED FOR	NORTH RIVER RANCH, LLC	
SURVEYED BY	JLH	5/1/2015
SCALE: 1"=100'	DRAWN BY: JLH	

RECORD MAP OF SURVEY NO. 2030