

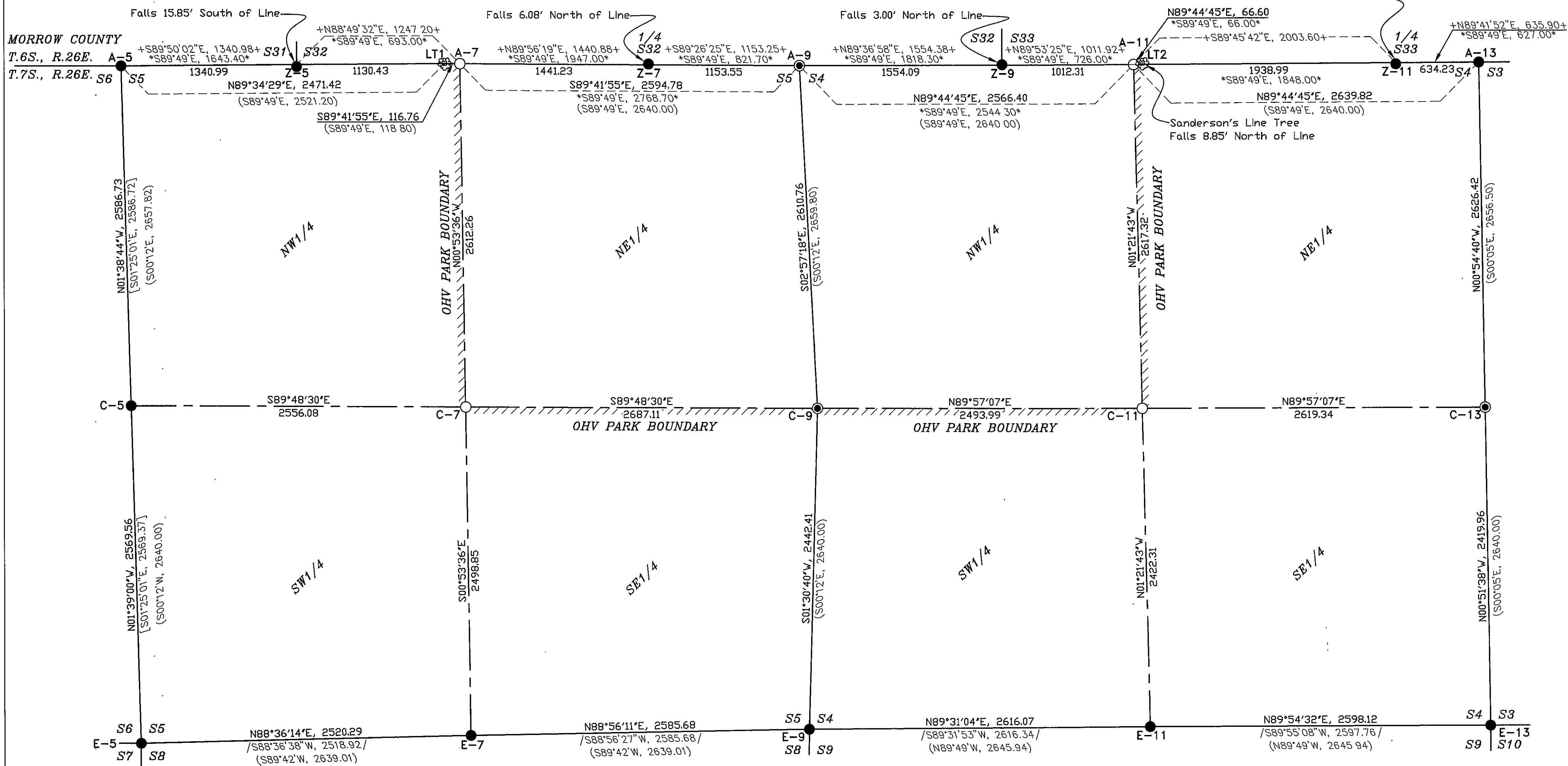
# CORNER INDEX

A-5	Found brass capped monument set by Kurt Weaver, from original evidence, in 1980. See Grant County Corner Restoration T7S R26E, A-5	A-11	Searched for, no evidence found. Set 30"x2-1/2" dia. aluminum pipe with 3" dia aluminum cap online between the NE & NW corner of Section 4 and proportioned easting from the found Sanderson line tree 1 chain east and the NW corner of Section 4.	C-11	Set 30"x2-1/2" dia. aluminum pipe with 3" dia aluminum cap at calculated position.
Z-5	Found brass capped monument set by Kurt Weaver, from original evidence in 1980. See Grant County Corner Restoration T7S R26E, Z-5(T6S R26E) Mon. falls 15.85' South of the North line of Section 5.	LT2	Fd. 44' Pine Line Tree with blaze marks on the east and west faces. Accepted as Sanderson's original 24' Pine line tree. Tree falls 8.85' North of the North line of Section 4.	C-13	Fd. 12"x10"x7" stone, no marks, and two bearing trees. Set 30"x2-1/2" dia. aluminum pipe with 3" dia aluminum cap.
A-7	Searched for, no evidence found. Set 30"x2-1/2" dia. aluminum pipe with 3" dia aluminum cap at proportionate measure between the found York Line Tree to the west and the NE corner of Section 5.	Z-11	Found brass capped monument set by Wayne Harris, from original evidence, in 1979. See Grant County Corner Restoration T7S R26E, Z-11(T6S R26E) Mon. falls 9.15' South of the North line of Section 5.	E-5	Found brass capped monument set by Wayne Harris, from original evidence, in 1979. See Grant County Corner Restoration T7S R26E, E-5 and Map of Survey #585.
LT1	Found a 35' dia. Pine Snag with axe notches in the East and West faces. Accepted as York's original 37' Pine line tree.	A-13	Found brass capped monument set by Wayne Harris, from original evidence, in 1979. See Grant County Corner Restoration T7S R26E, A-13.	E-7	Found brass capped monument set by Wayne Harris, from original evidence, in 1979. See Grant County Corner Restoration T7S R26E, E-7 and Map of Survey #585.
Z-7	Found brass capped monument set by Ron McKinnis, from original evidence, in 2013, on a survey pending filing with the Morrow County Surveyor. Monument falls 6.08' North of the North line of Section 4.	C-5	Found brass capped monument set by Kurt Weaver at proportionate measure, in 1981. See Grant County Corner Restoration T7S R26E, C-5 and Map of Survey #688.	E-9	Found brass capped monument set by Wayne Harris, from original evidence, in 1979. See Grant County Corner Restoration T7S R26E, E-9 and Map of Survey #585.
A-9	Fd. 3 of the 4 record bearing trees. Positioned corner monument at best record fit. Set 30"x2-1/2" dia. aluminum pipe with 3" dia aluminum cap.	C-7	Set 30"x2-1/2" dia. aluminum pipe with 3" dia aluminum cap at calculated position.	E-11	Found brass capped monument set by Wayne Harris, from original evidence, in 1979. See Grant County Corner Restoration T7S R26E, E-11 and Map of Survey #585.
Z-9	Found brass capped monument set by Ron McKinnis, from original evidence, in 2013, on a survey pending filing with the Morrow County Surveyor. Mon. falls 3.00' North of the North line of Section 4.	C-9	Fd. 12"x12"x9" stone, no marks, set in a mound of stones, and two bearing trees. Set 30"x2-1/2" dia. aluminum pipe with 3" dia aluminum cap.	E-13	Found brass capped monument set by Wayne Harris, from original evidence, in 1979. See Grant County Corner Restoration T7S R26E, E-13 and Map of Survey #585.

# REFERENCES

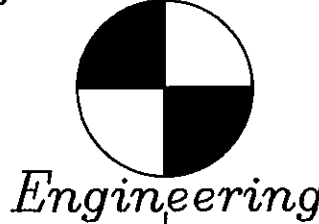
Grant County Map of Survey #s 585 & 688  
Pending Survey by Ron McKinnis to be filed in Morrow Co.  
GLO records for Edward Sanderson, Contract #368  
GLO records for A.F. York, Contract #309

NOTE: Distance shown along the Township line for this Survey are online, at a point perpendicular to the township line, for monuments not falling on the line.

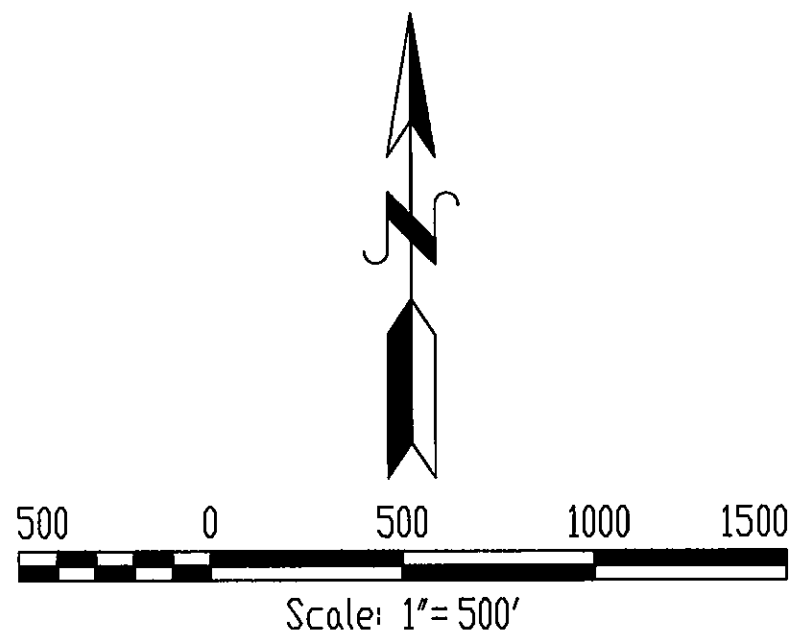


BOUNDARY SURVEY  
Situated in Sections 4 & 5,  
T.7S., R.26E., W.M.,  
Grant County, Oregon  
Survey completed in November, 2008  
Revised in August, 2013

Ferguson Surveying



P.O. BOX 519, 210 E. MAIN  
MT. VERNON, OR 97865  
PHONE (541) 932-4520  
FAX (541) 932-4430  
EMAIL dfse@oretelco.net



BASIS OF BEARINGS: GPS Observations rotated to True North near the 1/4 corner to Sections 4&5

# NARRATIVE

This survey was performed at the request of the Morrow County Public Works Department to locate and monument the corners of the NE1/4 of Section 5 and the NW1/4 of Section 4, T.7S. R.26E., W.M., which partially bound the Morrow-Grant County OHV Park.

The Township line between T.6S. and T.7S., R.26E. was originally surveyed by A.F. York under G.L.O. Contract No. 309, dated Nov. 18, 1878. York also subdivided T.7S. R.26E. under the same contract.

The Township line was retraced by Edward Sanderson under G.L.O. Contract No. 368, dated 368, dated Sep. 7, 1880. Sanderson's retracement established the corners for T.6S., R.26E. only.

During the course of this survey, we recover record monuments on the Township line, as shown, at the corner to Sections 5 & 6, the corner to Sections 5 & 4 and the corner to Sections 4 & 3.

We also recover record monuments at the section corner to Sections 31 & 32, the south 1/4 corner to Section 32, the section corner to Sections 32 & 33, and the south 1/4 corner to Section 33, all in T.6S., R.26E. We find that Sanderson's retracement, based on the locations of the monuments found lying far off line and the erroneous errors in Sanderson's distances, is not an obvious, careful retracement of York's senior line. Fallings from Sanderson's corners to the Township line are shown herein.

We also recovered original corner evidence at the quarter corner to Sections 4&5 and to Sections 3&4.

The North quarter corner to Section 5 was searched for, but no original evidence was recovered. We did, however, recover a record line tree taken by A.F. York, 1.8 chains west of the North 1/4 of Section 5. We also find the creek, called by York 0.4 chains west, to be in harmony with the found line tree. This corner is determined to be obliterated in accordance with the 2009 BLM Manual, Sections 6-17 & 6-19. The North 1/4 of Section 5 is located at proportionate measure from above said line tree and the found monument at the NE Corner of Section 5, utilizing York's record measurements, set online in accordance with Section 7-27 of the 2009 Manual. It is apparent that Sanderson's retracement measurements could not be utilized to position this corner, as that would have placed the corner approximately 540' west.

The North quarter corner to Section 4 was searched for, but no original evidence was recovered. We did, however, recover the record line tree taken by Sanderson 1 chain east of the North 1/4 of Section 4. Sanderson's measurement from the corner common to Sections 32 & 33 to the N1/4 of Section 4, being 11 chains (726.00') does not fit well when compared to the measurements made during this survey, being 1012.31' (distance along Township Line). However, we find that Sanderson's total measurement from the NW corner of Section 4 to his line tree, returned as 2610.30' by Sanderson, conforms relatively well with our measurement of 2633.00', measured along the Township Line. In accordance with Section 7-30 of the 2009 manual, this corner is positioned online between the found senior corners at the NW & NE corners of Section 4 and at proportionate eastings from the said found Sanderson line tree and the NW corner of Section 4, using Sanderson's record distances. It should be noted that for comparison, a proportionate position based on York's record would have placed the corner 36.71' east of the monumented position and 29.89' west of the found line tree.

Both Sections 4 and 5 are then subdivided in the normal manner.

This survey was performed using Topcon Hyper II GPS equipment and ground distances were shot with a Wild TC-1600 Total Station to determine a ground localization scale factor. Static observations were taken at selected monuments and reduced to ground distances and local coordinates. The basis of bearing for this survey is based on GPS observations at a point being 277.10' south and 1347.81' east of the W1/4 of Section 5, then rotated 00°00'42" to true north near the 1/4 corner to Sections 4&5.

# LEGEND

- +BEARING/DIST+ Bearing/Dist. returned by Ron McKinnis on a on a pending Morrow County Survey.
- [BEARING/DIST] Bearing/Dist. returned by Kurt C. Weaver on Grant County Map of Survey No. 688, filed on August 11, 1981.
- /BEARING/DIST/ Bearing/Dist. returned by Wayne D. Harris on Grant County Map of Survey No. 585, filed on October 5, 1979.
- \*BEARING/DIST\* Bearing/Dist. returned by Edward Sanderson under GLO Contract No. 368 dated Sept. 7, 1880.
- (BEARING/DIST) Bearing/Dist. returned by A.F. York under GLO Contract No. 309 dated Nov. 18, 1878.
- Found monument of Record. See CORNER INDEX.
- ⊙ Found original evidence. Set 30"x2-1/2" dia. aluminum pipe with 3" dia. aluminum cap. See CORNER INDEX.
- ⊗ Found Record Line Tree. See CORNER INDEX.
- Set 30"x2-1/2" dia. aluminum pipe with 3" dia. aluminum cap. See CORNER INDEX.

RECEIVED AND FILED  
GRANT COUNTY SURVEYOR

NOV 7 2013

BY: *[Signature]*

GRANT COUNTY MAP OF SURVEY 1985  
MORROW COUNTY MAP OF SURVEY 2013-1087