

## REFERENCES

RECEIVED AND FILED  
GRANT COUNTY SURVEYOR

BY: MOB

**NARRATIVE**

A SEARCH WAS MADE OF THE AVAILABLE RECORDS PERTAINING TO THIS SURVEY. I FOUND THE FOLLOWING RECORD SURVEYS: SURVEY NO. 117 BY ROBERT BAGETT IN 1968, A BLM CADASTRAL SURVEY CONDUCTED BY WAYNE ROGERS IN 1977, SURVEY NO. 670 BY ROBERT BAGETT IN 1981, SURVEY NO. 1465 BY ROBERT BAGETT IN 1998, SURVEY NO 1629 BY JACK WATSON IN 2002 AND SURVEY NO. 1983, WHICH I SURVEYED IN AUGUST 2013. DURING SURVEY NO. 117, MR. BAGETT SUBDIVIDED SECTION 25. HE LATER RECORDED SURVEY NO. 670 FOR THE PURPOSE OF CORRECTING CERTAIN ERRORS HE DISCOVERED ON SURVEY NO. 117.

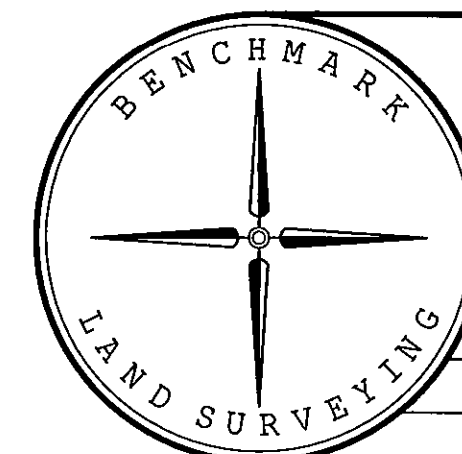
AT THE CE1/16 CORNER OF SECTION 25, I FOUND THE IRON PIPE SET BY MR. BAGETT BURIED AND LYING ON ITS SIDE. THERE WAS A 24" PINE WITH A BT TAG ATTACHED TO THE SOUTHEAST OF THE PIPE. THE BT TAG STATED THAT THE CORNER WAS N52°W, 38.2 FT. WHEN I STOOD THE PIPE UP, THE MEASUREMENT TO THE BT MATCHED THE RECORD. I DROVE THE PIPE FLUSH WITH THE GROUND WHERE I FOUND IT AND PLACED A YELLOW PLASTIC CAP MARKED BENCHMARK SURVEYING INSIDE IT.

I ACCEPT THE FOUND MONUMENTS FROM THE AFOREMENTIONED SURVEYS SHOWN HEREON. I SET THE SE1/16 CORNER AND THE E1/16 CORNER ON THE SOUTH LINE OF SAID SECTION 25 PER 2009 BLM MANUAL OF SURVEYING INSTRUCTIONS. SEE COUNTY CORNER RESTORATION RECORDS FOR ADDITIONAL DETAILS ON THE C1/4 CORNER AND ITS ACCESSORIES.



RECORD MAP OF SURVEY NO. 117 & 1629  
ALONG THE SOUTH LINE OF SECTION 25, AS SHOWN

### LEGEND



MAP OF SURVEY  
SITUATED IN THE SE1/4 AND SW1/4 SECTION 25,  
T.11S., R.26E., W.M.,  
GRANT COUNTY, OREGON

SURVEYED FOR	NORM RALSTON	
SURVEYED BY	MCS & JLH	8/21/2013
Scale: 1"=400'	Drawn by: MCS	