

## NARRATIVE

THIS SURVEY WAS PERFORMED AT THE REQUEST OF RON BURNETTE. THE PURPOSE OF THIS SURVEY WAS TO MONUMENT THE CORNERS OF THE SW1/4SW1/4 OF SECTION 27, T.9S., R.32E. AND TO POST THE NORTH AND EAST LINES WITH WOOD LATH AND FLAGGING. THIS SURVEY REQUIRED A DEPENDENT RESURVEY AND SUBDIVISION OF SAID SECTION 27.

A SEARCH WAS MADE OF THE AVAILABLE RECORDS PERTAINING TO THIS SURVEY. THE FOLLOWING IS A HISTORY OF RELEVANT SURVEYS:

HERMAN D. GRADON, DEPUTY SURVEYOR FOR THE GENERAL LAND OFFICE SUBDIVIDED TOWNSHIP 9 SOUTH, RANGE 32 EAST UNDER CONTRACT NUMBER 416 IN AUGUST 1881.

WILLIAM WEAVER, PLS, SURVEYED THE SOUTH LINE OF SECTION 27 IN MARCH 1983. HIS MAP IS FILED AS MAP OF SURVEY NO. 766 IN THE OFFICE OF THE GRANT COUNTY SURVEYOR. WEAVER'S MAP AND CORRESPONDING CORNER RESTORATION SHEETS SHOW THAT HE FOUND ORIGINAL CORNER EVIDENCE AT THE SOUTHEAST AND SOUTHWEST CORNERS OF THE SECTION. HE PLACED THE S1/4 CORNER AT SINGLE PROPORTION MEASUREMENT BETWEEN THE FOUND SOUTHEAST AND SOUTHWEST CORNERS.

LELAND MYERS, PLS, SURVEYED THE EAST LINE OF SECTION 27 IN OCTOBER 1986. HIS MAP IS FILED AS MAP OF SURVEY NO. 980 IN THE OFFICE OF THE GRANT COUNTY SURVEYOR. MYERS' MAP AND CORRESPONDING CORNER RESTORATION SHEETS SHOW THAT HE FOUND ORIGINAL CORNER EVIDENCE AT THE E1/4 CORNER OF SECTION 27 AND THAT HE PLACED THE NORTHEAST CORNER OF SECTION 27 BY DOUBLE PROPORTIONATE METHOD.

IN APRIL 1998, JACK WATSON, PLS, PERFORMED A DEPENDENT RESURVEY AND SUBDIVISION OF SECTION 28. HIS MAP IS FILED IN THE OFFICE OF THE GRANT COUNTY SURVEYOR AS MAP OF SURVEY NO. 1477. HIS MAP AND CORRESPONDING CORNER RESTORATION SHEET INDICATE THAT IN 1996 HE FOUND A MARKED ORIGINAL STONE AND A STONE MOUND AT THE W1/4 CORNER OF SECTION 27.

IN JANUARY AND MAY 2013, JASON HATFIELD AND I CONDUCTED A CORNER RESTORATION PROJECT IN SECTIONS 27 AND 28 ON BEHALF OF THE GRANT COUNTY SURVEYOR'S OFFICE. WE RECOVERED THE AFOREMENTIONED CORNERS AS PART OF THIS PROJECT. UPDATED CORNER RESTORATION SHEETS HAVE BEEN FILED WITH THE COUNTY SURVEYOR'S OFFICE.

AS PART OF THIS SURVEY, WE BEGAN BY LOCATING THE CONTROLLING CORNERS FOR THE SUBDIVISION OF SECTION 27. THE EAST AND SOUTH LINES OF THE SECTION FIT WITHIN ACCEPTABLE TOLERANCE AND THE RECORD MONUMENTS SHOWN HEREON ARE ACCEPTED. THE LINE BETWEEN THE SOUTHWEST CORNER OF SECTION 27 AND THE 1996 W1/4 CORNER BEARS N.02°31'40"E. THE BEARING SEEMED EXCESSIVELY INCLINED TO THE NORTHEAST SO WE DECIDED TO REVISIT THE CORNER IN ORDER TO INSPECT THE EVIDENCE ACCEPTED BY WATSON AND TO SEARCH AN AREA CLOSER TO THE GLO RECORD POSITION FOR THE W1/4 CORNER.

NEAR THE GLO RECORD POSITION, WE FOUND A BASALT STONE MEASURING 17"x11"x6" (GLO RECORD = 18"x14"x6"). THE STONE WAS CLEARLY MARKED 1/4 AND WAS LYING FACE UP IN A MOUND CONTAINING 10 OTHER STONES. THE MARKED STONE WAS THE INTERSECTION OF FENCES RUNNING NORTHEAST, SOUTHERLY AND NORTHWEST. MR. BARNETTE SHOWN WHERE THE REMAINS OF ROCK CRIB FENCE CORNERS HAD BEEN IN THE PAST. THE OLD FENCE CORNERS WERE WITHIN SIX FEET OF THE FOUND STONE, THE MONUMENT SET BY WATSON IN 1996 IS S.80°00'14"E, 110.71 FEET FROM THE FOUND MARKED STONE. WE SEARCHED FOR, BUT WERE UNABLE TO FIND THE STONE ACCEPTED BY MR. WATSON. WE DISCUSSED OUR FINDING WITH HIM AND HE STATED THAT HIS NOTES SAID THE STONE HE FOUND WAS "DIMLY MARKED", BUT COULD OFFER NO ADDITIONAL INFORMATION. HE SUGGESTED THAT I ACCEPT THE MARKED STONE FOR THE POSITION OF THE 1/4 CORNER.

A LINE BETWEEN THE SOUTHWEST CORNER OF SECTION 27 AND THE MARKED STONE IS N.00°10'16"E, 2669.43 FEET (GLS RECORD NORTH 2640.0). THIS BEARING AND DISTANCE SEEMS TO BE MORE ACCURATE WITH THE RECORD THAN THE EVIDENCE IN THIS AREA. AT THIS POINT THE COUNTY SURVEYOR HAS CHOSEN TO ACCEPT THE CORNER MONUMENTED BY MR. WATSON AND ON BEHALF OF THE GRANT COUNTY SURVEYOR'S OFFICE, I MONUMENTED THE FOUND MARKED STONE WITH A COUNTY SURVEYOR BRASS CAP. I MARKED WATSON'S 1996 ALUMINUM CAP "AM" FOR AMENDED MONUMENT. SEE THE CORNER RESTORATION SHEET FILED IN THE OFFICE OF THE GRANT COUNTY SURVEYOR FOR MORE SPECIFIC DETAILS.

WE SEARCHED FOR, BUT WERE UNABLE TO FIND THE ORIGINAL MARKED STONES AT THE NORTHWEST CORNER AND N1/4 CORNER OF SECTION 10. THE POSITION FOR THE NORTHWEST CORNER FELL BELOW A VERTICAL ROCK FACE THAT HAD SLED ROKS AND A YAK HOLE MARKED IN THE STONE'S AND STONE MOUNDS IN THE VICINITY, BUT NONE WITH DEFINITE MARKINGS. WE ALSO FOUND THE REMAINS OF A 4"x4" POST AND A K-TAG DATED 1938 AT THE TOP OF THE ROCK FACE. THE K-TAG WAS MARKED "ASSUMED COR. BY COMPASS AND CHAINING". THE SEARCH POSITION FOR THE N1/4 CORNER FALLS BETWEEN THE REMAINS OF AN OLD, DOWN FENCE AND A ROADBED. I DETERMINED THIS CORNER TO BE LOST, POSSIBLY DUE TO FENCING OR ROAD BUILDING ACTIVITIES.

THE CALCULATED PROPORTIONATE POSITION FOR THE N1/4 CORNER FELL ABOUT 10 FEET NORTH OF THE REMAINS OF THE OLD, DOWN FENCE WHICH EXTENDS TO THE EAST FOR ABOUT 1/2 MILE AND TO THE WEST FOR ABOUT 1/4 MILE. I HELD THE EASTINGS OF THE PROPORTIONED POSITION AND MOVED THE CORNER POINT SOUTH APPROXIMATELY 10 FEET TO A LOCATION ALIGNED WITH THE OLD FENCE. MY FINAL POSITION FOR THE N1/4 CORNER RELIES ON FOUND EVIDENCE AS WELL AS HISTORIC LINES OF OCCUPATION OF ADJACENT LANDOWNERS.

WE SUBDIVIDED SECTION 27 IN ACCORDANCE WITH THE 2009 BLM MANUAL OF SURVEYING INSTRUCTIONS. WE SET AN OFFSET PIN N.00°21'28"E, A DISTANCE OF FEET 25.00 FROM THE W1/16 ON THE SOUTH LINE OF SAID SECTION 27. THE TRUE POSITION FOR THE 1/16 CORNER FALLS ON THE EDGE OF A SLOUGH THAT IS DENSELY COVERED WITH VEGETATION.

SEE CORNER RESTORATION RECORDS FILED IN THE OFFICE OF THE GRANT COUNTY SURVEYOR FOR  
DETAILS ON THE CORNERS SET DURING THIS SURVEY AND THEIR ACCESSORIES.

### LEGEND

- ☒ FOUND 1 $\frac{1}{2}$ " GALV. IRON PIPE WITH ATTACHED GRANT COUNTY SURVEYOR BRASS CAP  
☒ FOUND 1 $\frac{1}{2}$ " ALUMINUM PIPE WITH ATTACHED 3" ALUMINUM CAP FROM SURVEY NO. 766  
☒ FOUND 2" ALUM. PIPE AND 3 $\frac{1}{4}$ " ALUM. CAP FROM SURVEY NO. 980  
☒ FOUND 2 $\frac{1}{2}$ " ALUMINUM PIPE WITH ATTACHED 2 $\frac{1}{2}$ " ALUMINUM CAP MARKED 1996 - LS 2734 ALSO MARKED "AM" - SEE NARRATIVE  
☒ SET 5/8"x30" IRON PIN WITH ATTACHED 2" ALUMINUM CAP MARKED BENCHMARK LAND SURVEYING AND WITH APPROPRIATE 1/16 OR 1/4 CORNER DESIGNATION  
☐ SET 5/8"x30" IRON PIN WITH ATTACHED YELLOW PLASTIC CAP MARKED BENCHMARK SURVEYING  
 G( ) GLO RECORD BEARING AND DISTANCE  
 [ ] RECORD BEARING AND DISTANCE FROM SURVEY NO. 766  
 1[ ] RECORD BEARING AND DISTANCE FROM SURVEY NO. 980  
 X—X FENCE LINE

## REFERENCES

RECORD MAP OF SURVEY NO.'S 766, 980 & 1477  
LAND PARTITION PLAT NO. 96-10  
GRANT COUNTY CORNER RESTORATION RECORDS  
GLO FIELD NOTES

## BASIS OF BEARINGS

N89°14'20"W BETWEEN THE NE COR. SEC. 27  
AND THE N1/4 COR. SEC. 28  
FROM RECORD SURVEY NO. 980  
AS SHOWN HEREON

RECEIVED AND FILED  
GRANT COUNTY SURVEYOR

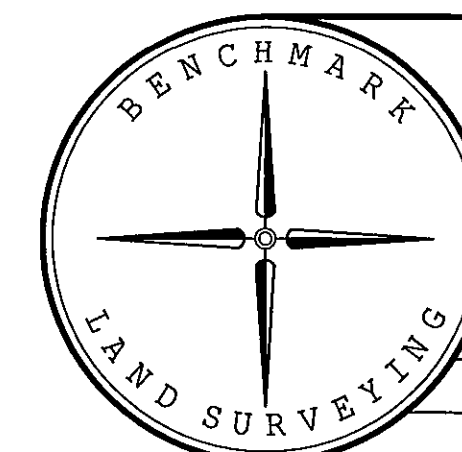
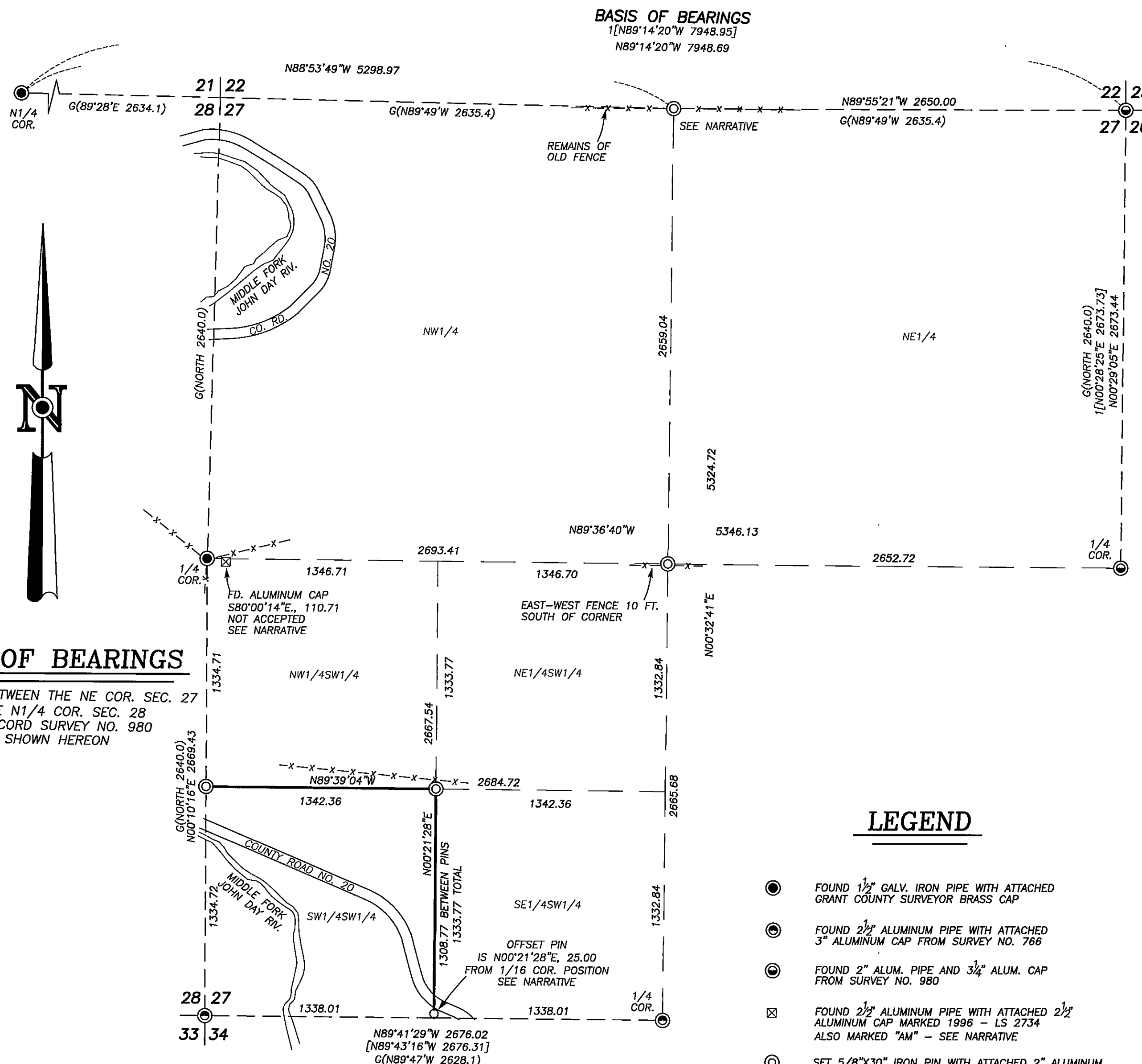
MAY 31 2013

BY: [Signature]

REGISTERED  
PROFESSIONAL  
LAND SURVEYOR

OREGON  
JULY 9, 2002  
MICHAEL C. SPRINGER  
#70918

EXPIRES: 6/30/2014



BENCHMARK LAND SURVEYING  
217 N. CANYON BLVD. JOHN DAY, OREGON  
2101 MAIN STREET, STE 223 BAKER CITY, OREGON  
541-575-1251 ~ 800-699-0516

MAP OF SURVEY  
A DEPENDENT RESERVE AND SUBDIVISION  
OF SECTION 27, T.9S., R.32E., W.M.,  
GRANT COUNTY, OREGON

SURVEYED FOR	RON BURNETTE	
SURVEYED BY	MCS & JLH	5/24/2013
Scale: 1"=500'	Drawn by: MCS	

RECORD MAP OF SURVEY NO. 1978