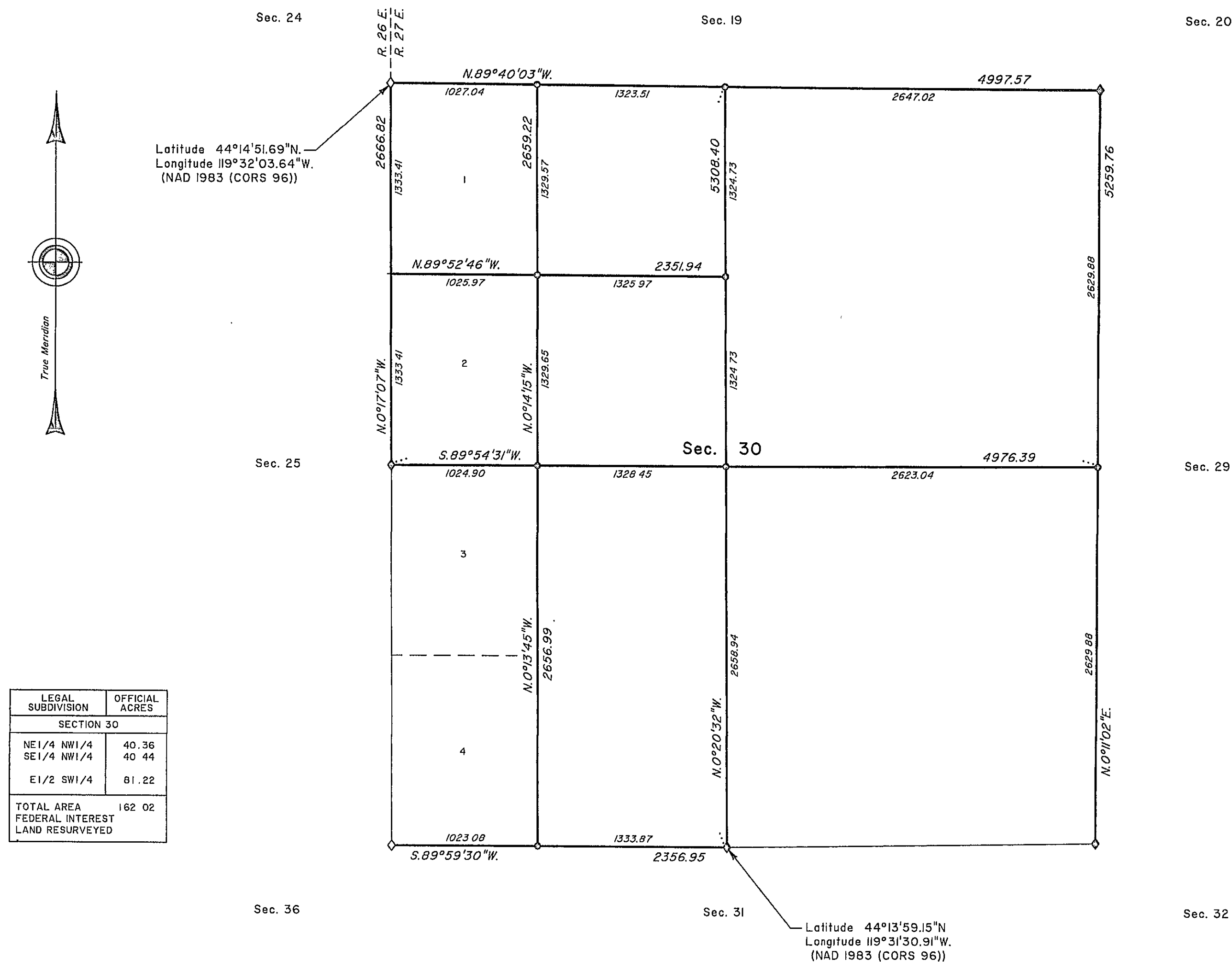


## TOWNSHIP 15 SOUTH, RANGE 27 EAST, OF THE WILLAMETTE MERIDIAN, OREGON

## DEPENDENT RESURVEY AND SUBDIVISION OF SECTION 30



A history of surveys, corner descriptions, and other relevant information are contained in the field notes.

This plat represents the dependent resurvey of a portion of the west boundary and subdivisional lines, designed to restore the corners in their true original locations according to the best available evidence, and the subdivision of section 30, Township 15 South, Range 27 East, Willamette Meridian, Oregon.

Official areas based on the measurements of this survey have been returned for Federal interest land where indicated. Aliquot part legal subdivisions retain their aliquot characteristics and refer to precisely the same land as that which was previously identified by its original survey or description. A lot can only be subdivided by survey or supplemental plat. Except as indicated hereon, the lottings and areas are as shown on the plat approved November 5, 1881.

Survey executed by Michael O. Jones, Cadastral Surveyor, beginning October 11, 2011, and completed November 14, 2011, pursuant to special instructions approved September 30, 2011 for Group No. 2636, Oregon.

UNITED STATES DEPARTMENT OF THE INTERIOR  
BUREAU OF LAND MANAGEMENT

Portland, Oregon

This plat is strictly conformable to the approved field notes, and the survey, having been correctly executed in accordance with the requirements of law and the regulations of this Bureau, is hereby accepted.

For the Director

*Mary J. M. Hart*

Chief Cadastral Surveyor of Oregon

November 16, 2012

Date

RECEIVED AND FILED  
GRANT COUNTY SURVEYOR

APR 15 2013

BY: *[Signature]*