



THE SE<sup>1</sup>/<sub>4</sub> OF SECTION 5 AND THE NE<sup>1</sup>/<sub>4</sub> OF SECTION 8, T. 16 S., R. 31 E., W.M.

NARRATIVE

THE BOUNDARY OF THE ODOT-OWNED MATERIAL SOURCE WAS RESOLVED AS FOLLOWS: PER RECORD DEED DESCRIPTION (BK. 43, PG. 432, GRANT COUNTY RECORDS), CENTER LINE STATION 2672+58.00 WAS HELD AS THE POINT OF BEGINNING OF TRACT "A". THE DEED DESCRIPTION FOR TRACT "C" OF THE MATERIAL SOURCE (BK. 44, PG. 107, GRANT COUNTY RECORDS) CALLS FOR THE CENTER OF SECTIONS 5 AND 8 AS BEING THE WEST BOUNDARY OF THE PROPERTY. PER SAID DESCRIPTIONS AND THE DEED DESCRIPTION FOR TRACT "B" (BK. 44, PG. 31, GRANT COUNTY RECORDS), ALL PARCELS ARE ADJOINING AND SHARE A COMMON WEST BOUNDARY. BASED ON THIS INFORMATION AND IN ACCORDANCE WITH ORS 93.310, I HELD THE NORTH-SOUTH CENTER LINE OF SECTIONS 5 AND 8 AS THE WEST BOUNDARY OF THE MATERIAL SOURCE.

HOLDING SAID CENTER LINE AS THE WEST BOUNDARY RESULTED IN AN ANGLE POINT AT THE SECTION LINE. RECORD DEED DISTANCES WERE HELD ALONG THE NORTH-SOUTH CENTER LINE TO ESTABLISH THE SW CORNER OF TRACT "C".

RECORD DEED DISTANCES WERE HELD FOR THE REMAINDER OF THE MATERIAL-SOURCE PROPERTY. HOLDING THE PREVIOUSLY DESCRIBED RECORD DATA RESULTED IN A DISTANCE DISCREPANCY FOR THE PORTION OF TRACT "A" CONNECTING TO THE HIGHWAY, AS SHOWN.

REAL TIME KINEMATIC GPS AND THE DOUBLE TIE METHOD WAS USED FOR OBTAINING THE POSITION OF FOUND MONUMENTS. BASIS OF BEARINGS AND COORDINATES IS GRID, BASED ON AN OPUS SOLUTION AT OUR GPS BASE STATION ON POINT #1000. NGS RETURNED NAD83(CORS96KEPOCH2002) COORDINATES WITH A COMBINED SCALE FACTOR OF 0.99980663. THE PROJECT IS PLACED ON A LOCAL DATUM PLANE (LDP). TO CONVERT LDP COORDINATES TO STATE PLANE, MULTIPLY BY THE SCALE FACTOR.

REFERENCES

ODOT DRAWING: 6B-2-9

NOTE: ODOT RECORDS ARE ON FILE IN SALEM ODOT OFFICE.

OREGON CORNER RESTORATION RECORDS (O.C.R.R.):

C-7  
E-7  
E-9  
J-5  
J-13  
R-9

GRANT COUNTY SURVEYS:

CS 791  
CS 1123  
CS 1124  
CS 1762

1000  
Found 2 1/2" Aluminum Cap Marked  
"T16S R31E 1/4 S5 S8 LS1026 1989"  
And Both Bearing Trees Per CRR.  
Used For GPS Base Station.  
(07/23/2012)  
N. 200,445.90  
E. 8,590,021.33  
CRR E-7  
CS 1123

REGISTERED  
PROFESSIONAL  
LAND SURVEYOR

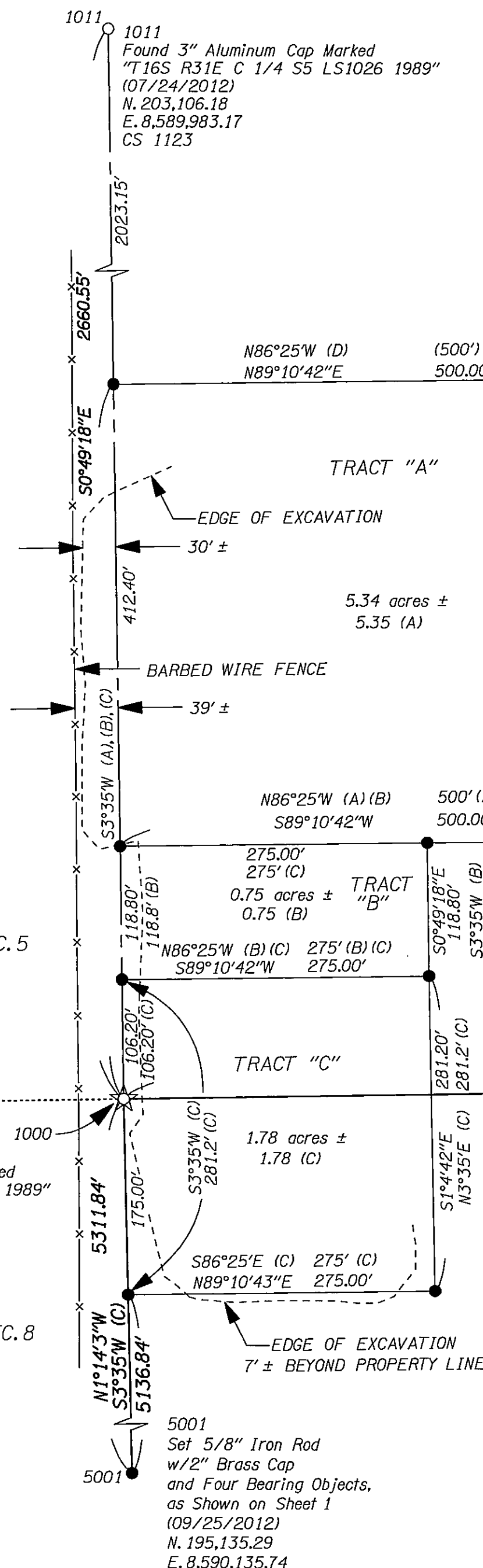
*Timothy John Hutchison*

OREGON  
NOVEMBER 10, 2010  
TIMOTHY JOHN HUTCHISON  
72563

EXPIRES 6/30/13

SCALE 1" = 100'

200 50 0 100 200 300  
FEET



NOTE - SEE SHEET 1 FOR SECTION BREAKDOWN AND HIGHWAY RESOLUTION.

LEGEND

- ★ FOUND GPS STATION AS NOTED
- FOUND MONUMENT AS NOTED.
- SET 5/8" X 30" IRON ROD W/YELLOW PLASTIC CAP MARKED "ODOT RW"; W/POST AND PADDLE MARKED "RIGHT OF WAY BOUNDARY MARKER NEARBY OREGON DEPARTMENT OF TRANSPORTATION". UNLESS OTHERWISE NOTED.
- (A) RECORD INFORMATION PER DEED, VOL. 43, PG. 432, GRANT COUNTY RECORDS.
- (B) RECORD INFORMATION PER DEED, VOL. 44, PG. 31, GRANT COUNTY RECORDS.
- (C) RECORD INFORMATION PER DEED, VOL. 44, PG. 107, GRANT COUNTY RECORDS.
- (D) RECORD INFORMATION PER DEED, VOL. 43, PG. 573-574, GRANT COUNTY RECORDS.
- (E) RECORD INFORMATION PER O.D.O.T. DRAWING 6B-2-9

----- PROTRACTED LINE -NOT SURVEYED-

STATE OF OREGON  
DEPARTMENT OF TRANSPORTATION  
REGION 4 RESOURCE CENTER, SURVEY RIGHT OF WAY UNIT  
63085 N. HWY. 97, SUITE 102  
BEND, OREGON. 97701  
MAP OF SURVEY  
STA. 2708+32.28 P.O.T. TO 2653+00.00 P.O.T. OF THE JOHN DAY-BURNS HIGHWAY  
(US HIGHWAY 395),  
IN THE SE <sup>1</sup>/<sub>4</sub> OF SECTION 5 AND THE NE <sup>1</sup>/<sub>4</sub> OF SECTION 8, T. 16 S., R. 31 E., W.M.  
GRANT COUNTY, OREGON.  
WINDY PIT ROCK QUARRY  
OCTOBER 2012  
SHEET 2 OF 2  
BEARINGS : GRID  
SCALE : 1" = 100'