

LEGEND

- Found monument of record as shown.
- Found 5/8" iron pin with attached yellow plastic cap, see Survey No. 862 unless otherwise shown.
- Set 5/8"x6" iron pin grouted into concrete with attached red plastic cap marked CORNERSTONE SURVEYING, INC.
- Set 5/8"x30" iron pin with attached red plastic cap marked CORNERSTONE SURVEYING, INC.
- x—x Fence Line
- () Deed record bearing and distance.
- 1(') 1914 Plat of John Day record bearing and distance.
- 2() Breedlove Addition record bearing and distance.
- 3() Survey No. 60 record bearing and distance.
- 4() Survey No. 862 record bearing and distance.
- 5() Survey No. 1008 record bearing and distance.
- 6() Survey No. 1042 record bearing and distance.
- 7() Circuit Court Case No. 12-07-162CV record bearing and distance.
- Found monument, see record map of survey number shown in box.

Scale 1"=50'

BASIS OF BEARINGS

Survey No. 1008

NARRATIVE

This survey was performed at the request of Mark Witty on behalf of Grant School District No. 3. The purpose of this survey was to locate and monument the boundary as described in Grant County Circuit Court Case No. 12-07-162CV.

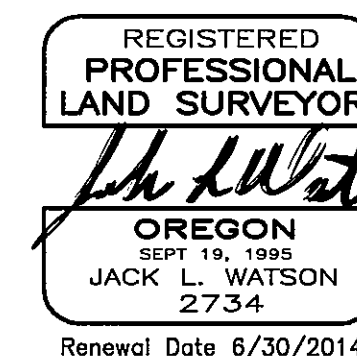
A search was made of the available records pertaining to this survey. Field measurements were made to locate the existing monuments shown hereon. A title search revealed that the school property has been assembled over the years by several deeds beginning in 1887. When the deeds were plotted there were substantial gaps and overlaps in the property boundaries. The City of John Day and Grant School District No. 3 have exchanged deeds to establish a common boundary for NW Bridge Street and NW Canton Street. The other gaps have been resolved by a suit to quiet the title, Grant County Circuit Court Case No. 12-07-162CV.

I accepted the found monuments on the southerly boundary from Survey No. 862, except the monument at the SE corner. The monument at the SE corner was found disturbed and I set another monument at this position. The south boundary of Lot 1, Block D of the John Day Plat as established in Survey No. 862 was used to intersect the new right of way line of NW Canton Street.

I found and accepted the 1" iron pipe at the W1/16 corner on the north boundary. This monument was established by Donald Staebler in 1966 as shown on Survey No. 60. Mr. Staebler found the Initial Point of Breedlove Addition and established the W1/16 corner at the record bearing and distance from the Initial Point. The NW corner and the N1/4 corner of Section 26 were tied and monuments were set at the intersection of the street right of way lines. I used the deed distance call from the N1/4 corner of Section 26 to establish the SW corner of Lot 11, Block C of the John Day plat. I accepted the found 1" iron pipe at the SE corner of Breedlove Addition. I rotated the bearings of Breedlove Addition counterclockwise 00°17'07" as shown on Survey No. 1042 for the south boundary of the subdivision. From the SW corner of Lot 11, Block C of the John Day plat, I intersected the south line of Breedlove Addition using a bearing parallel to the center line of NW Bridge Street. I used the deed record distance along Breedlove Addition to establish the NE property corner.

References

Deed Book G Page 383
Deed Book R Page 538
Deed Book X Page 260-261
Deed Book 56 Page 208-209
Deed Book 75 Page 349
Deed Book 82 Page 507
Circuit Court Case No. 12-07-162CV
Deed Instrument No. 20121781



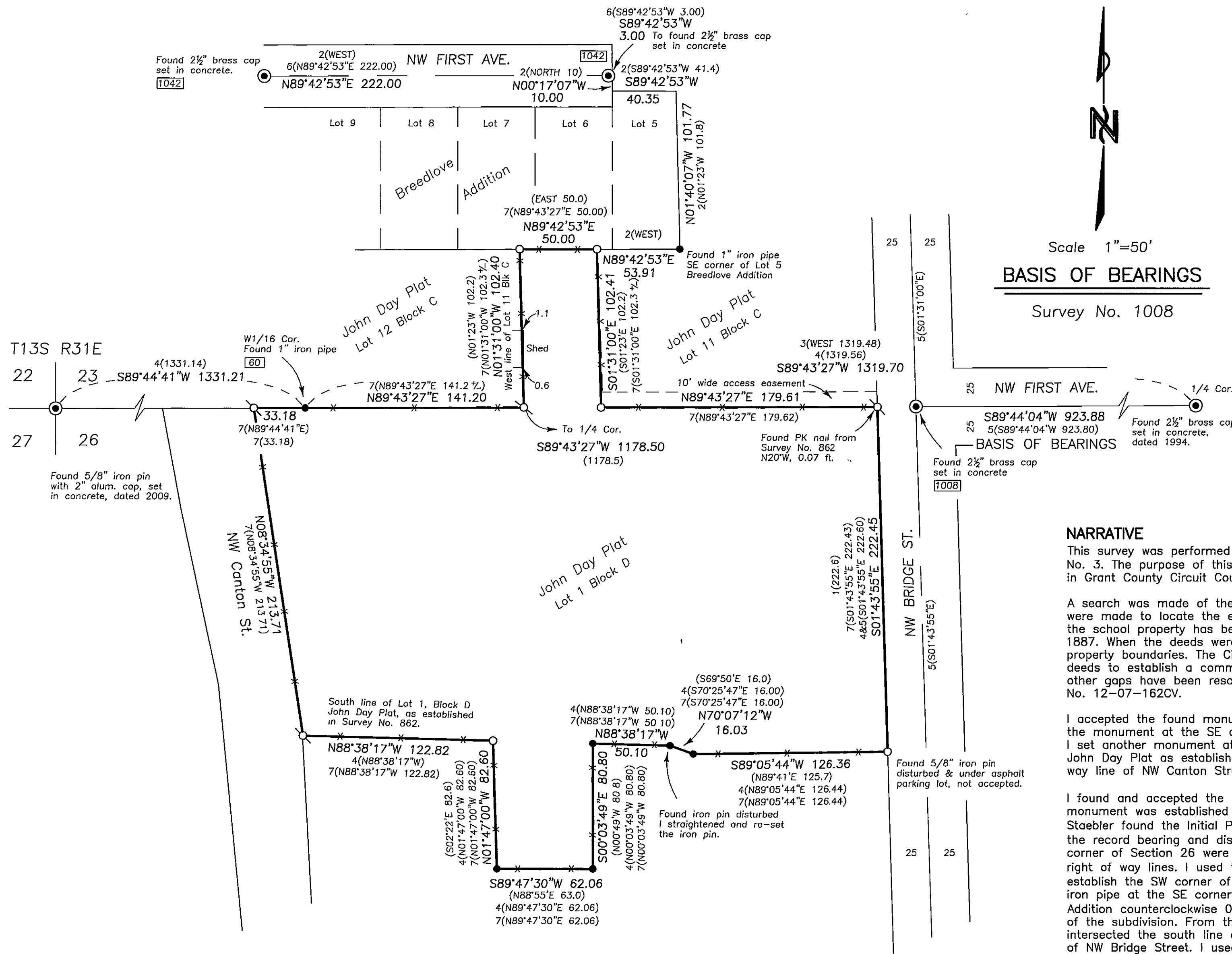
CORNERSTONE SURVEYING, Inc.
233 S. Canyon Blvd., John Day, Oregon 97845
(541) 575-1813

MAP OF SURVEY
SITUATED IN THE NW1/4 OF SECTION 26 AND
IN THE SW1/4 OF SECTION 23, T13S, R31E, W.M.
CITY OF JOHN DAY
GRANT COUNTY, OREGON

SURVEYED FOR: **Grant School District No. 3**

SURVEYED BY: **Jack Watson**

SURVEY COMPLETED: **9/05/2012**



RECEIVED AND FILED
GRANT COUNTY SURVEYOR

SEP 10 2012

BY: *[Signature]*
DEPUTY