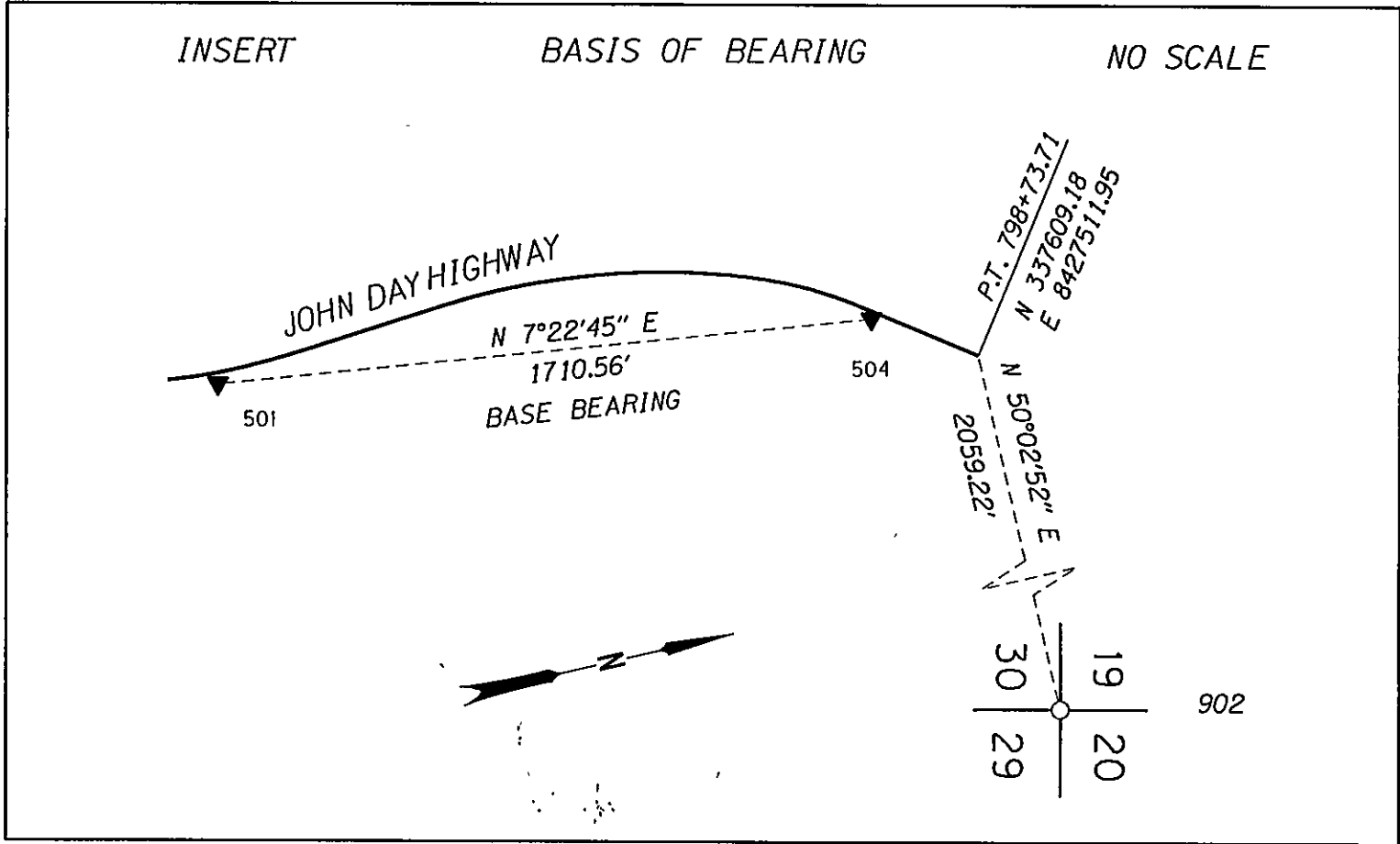


SEC. 30, T. 11 S., R. 26 E., W.M.



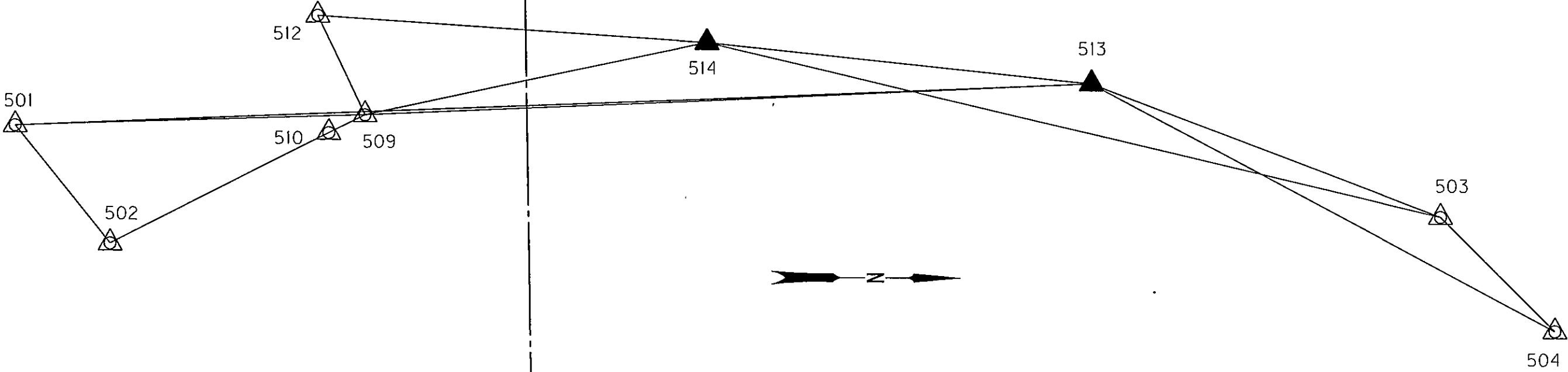
THE PURPOSE OF THIS MAP IS TO SHOW THE SURVEY CONTROL AND THE NEWLY ACQUIRED RIGHT OF WAY (RW) OF THE JOHN DAY HIGHWAY FOR THE OREGON DEPARTMENT OF TRANSPORTATION PROJECT (ODOT) "US 395: MCKAY CR. - SILVIES SLOUGH (D/B) - BUNDLE 414 BRIDGE NO. 07696". THIS SURVEY PERPETUATES THE ALIGNMENT AND RW DEVELOPED FOR THE PROJECT IN CONFORMANCE WITH OREGON REVISED STATUTE (ORS) CHAPTER 209 SECTION 155.

THE EXISTING RW IS LOCATED FROM ODOT DRAWINGS 1R-2-1026, 8B-25-14 AND 3B-19-12. THE PORTION OF EXISTING CENTER LINE FROM STATION 809+45 00.00 TO 820+68.45 WAS GENERATED FROM DRAWING NO. 7167, THE AS BUILT PLANS FOR GOOSE ROCK BRIDGE DATED JAN. 30, 1941. THE NEW RW AND CENTER LINE IS DESCRIBED BY ODOT DRAWING 11B-2-3 AND GRANT COUNTY SURVEY 1821. THE NEW RW PURCHASES ARE DESCRIBED BY SAID ODOT DRAWING.

THE BASIS OF BEARING WAS ESTABLISHED USING GPS AS DESCRIBED BY GRANT COUNTY SURVEY 1821. THIS SURVEY UTILIZES A LOCAL DATUM PLANE (LDP) WHICH IS RELATIVE TO THE OREGON COORDINATE SYSTEM OF 1983(CORS), NORTH ZONE, WITH RESPECT TO THE LOCAL LATITUDE AND GROUND ELEVATION. THE LDP COORDINATES DEFINE TRUE GROUND DISTANCES. TO CONVERT THE LDP COORDINATES FOR THE CONTROL POINTS TO THE OREGON COORDINATE SYSTEM OF 1983(CORS), NORTH ZONE, MULTIPLY THE LDP COORDINATES BY 0.999843147.

NETWORK DISTANCE AND BEARING TABLE

AT	TO	DISTANCE (FT)	BEARING
501	502	166.48'	N51°01'15"E
501	509	385.16'	N01°54'25"W
501	513	1186.72'	N02°24'59"W
502	510	269.64'	N26°58'20"W
503	504	177.12'	N44°38'02"E
503	513	411.21'	S20°41'28"W
503	514	829.60'	S13°13'14"W
504	513	577.58'	S27°50'24"W
509	510	44.62'	S26°32'50"E
509	512	121.35'	S64°21'44"W
509	513	801.58'	N02°39'40"W
509	514	386.52'	N12°11'45"W
512	514	431.19'	N03°41'22"E
513	514	425.25'	S05°59'53"W



LEGEND

▲	SET NETWORK POINT
△	FOUND MONUMENT USED AS NETWORK POINT
—▲—▲—	LINE OF OBSERVATION

BASIS OF BEARING AND CONTROL NETWORK SCHEMATIC NOT TO SCALE

NETWORK POINT COORDINATE TABLE

PT. NO.	LDP NORTHING	LDP EASTING	DATE	DESCRIPTION
501	335662.942	8427136.139	6/20/2012	FOUND 5/8" IRON ROD WITH 2" DIA. ALUMINUM CAP STAMPED "NET 1 APA OR2537 WA35140", WITH CARSONITE POST
502	335767.666	8427265.559	6/20/2012	FOUND 5/8" IRON ROD WITH 2" DIA. ALUMINUM CAP STAMPED "NET 2 APA OR2537 WA35140", WITH CARSONITE POST
503	337233.295	8427231.400	6/20/2012	FOUND 5/8" IRON ROD WITH 2" DIA. ALUMINUM CAP STAMPED "NET 3 APA OR2537 WA35140", WITH CARSONITE POST
504	337359.333	8427355.837	6/20/2012	FOUND 5/8" IRON ROD WITH 2" DIA. ALUMINUM CAP STAMPED "NET 4 APA OR2537 WA35140", WITH CARSONITE POST
509	336047.885	8427123.323	6/20/2012	FOUND 3" DIA. BRASS CAP STAMPED " STATE HIGHWAY DEPARTMENT, BM, NO, ELEVATION, FEET"
510	336007.972	8427143.264	6/20/2012	FOUND 5/8" IRON ROD, BENT TO THE SOUTH, TIE IN TO POINT USING ORIGINAL HOLE
512	335995.381	8427013.924	6/20/2012	FOUND 5/8" IRON ROD
513	336848.605	8427086.106	6/20/2012	SET 5/8"X30" IRON ROD WITH 1 1/2" DIA. ALUMINUM CAP STAMP "ODOT, 513, 2012"
514	336425.680	8427041.670	6/20/2012	SET 5/8"X30" IRON ROD WITH 1 1/2" DIA. ALUMINUM CAP STAMP "ODOT, 514, 2012"
902	338931.505	8429090.510	6/20/2012	FOUND 1 INCH IRON PIPE WITH 3 INCH BRASS CAP PROPERLY MARKED BY GRANT COUNTY SURVEYOR
				1979, Grant C.S No. 571

REGISTERED PROFESSIONAL LAND SURVEYOR

Robert E. Butler

OREGON
July 25, 1995
ROBERT ERICH BUTLER
2733

EXPIRES: 12/31/2013

OREGON DEPARTMENT OF TRANSPORTATION

RIGHT-OF-WAY NETWORK MONUMENTATION MAP

GOOSE ROCK BRIDGE NO. 02655

JOHN DAY HIGHWAY NO. 5

(OR 19)

GRANT COUNTY



ODOT REGION 5
3012 ISLAND AVE.
LA GRANDE, OR. 97850-9497

JUNE 20, 2012
SHEET 1 OF 2