

N.E. 1/4 SEC. 27 and N.W. 1/4 SEC. 26, T. 13 S., R. 30 E., W.M.

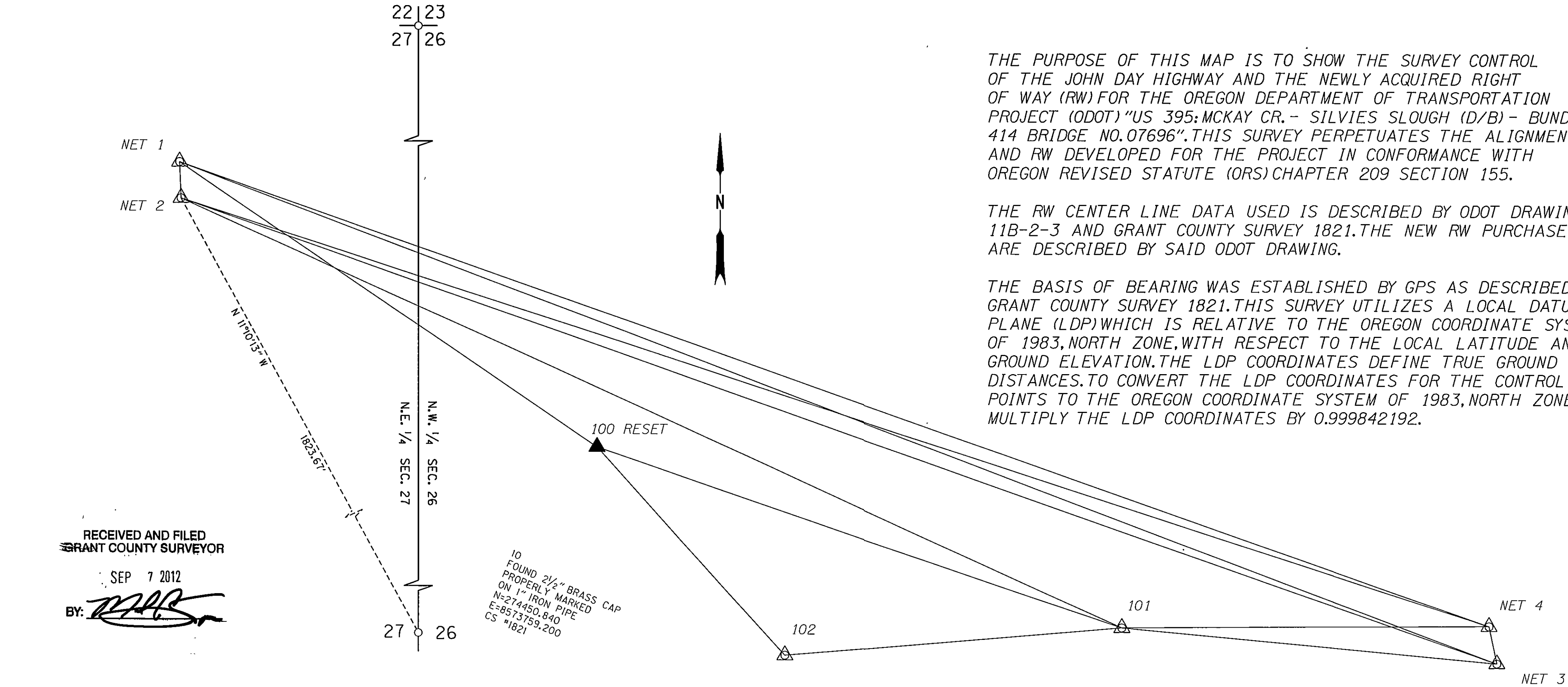
THE PURPOSE OF THIS MAP IS TO SHOW THE SURVEY CONTROL OF THE JOHN DAY HIGHWAY AND THE NEWLY ACQUIRED RIGHT OF WAY (RW) FOR THE OREGON DEPARTMENT OF TRANSPORTATION PROJECT (ODOT) "US 395: MCKAY CR. - SILVIES SLOUGH (D/B) - BUNDLE 414 BRIDGE NO. 07696". THIS SURVEY PERPETUATES THE ALIGNMENT AND RW DEVELOPED FOR THE PROJECT IN CONFORMANCE WITH OREGON REVISED STATUTE (ORS) CHAPTER 209 SECTION 155.

THE RW CENTER LINE DATA USED IS DESCRIBED BY ODOT DRAWING 11B-2-3 AND GRANT COUNTY SURVEY 1821. THE NEW RW PURCHASES ARE DESCRIBED BY SAID ODOT DRAWING.

THE BASIS OF BEARING WAS ESTABLISHED BY GPS AS DESCRIBED BY GRANT COUNTY SURVEY 1821. THIS SURVEY UTILIZES A LOCAL DATUM PLANE (LDP) WHICH IS RELATIVE TO THE OREGON COORDINATE SYSTEM OF 1983, NORTH ZONE, WITH RESPECT TO THE LOCAL LATITUDE AND GROUND ELEVATION. THE LDP COORDINATES DEFINE TRUE GROUND DISTANCES. TO CONVERT THE LDP COORDINATES FOR THE CONTROL POINTS TO THE OREGON COORDINATE SYSTEM OF 1983, NORTH ZONE, MULTIPLY THE LDP COORDINATES BY 0.999842192.

RECEIVED AND FILED  
GRANT COUNTY SURVEYOR

SEP 7 2012  
BY: *[Signature]*



NETWORK DISTANCE AND BEARING TABLE

AT	TO	DISTANCE (FT)	BEARING	REFERENCE DOCUMENT
1	2	53.45'	S02°18'46"E	53.4899' GRANT COUNTY SURVEY NO. 1821
1	3	2,097.92'	S69°16'43"E	2,097.9276' GRANT COUNTY SURVEY NO. 1821
1	4	2,067.81'	S70°36'22"E	2,067.8663' GRANT COUNTY SURVEY NO. 1821
1	100 RESET	751.31'	S55°44'23"E	N/A
2	3	2,077.59'	S70°38'07"E	2,077.5815' GRANT COUNTY SURVEY NO. 1821
2	4	2,048.64'	S71°59'42"E	2,048.6870' GRANT COUNTY SURVEY NO. 1821
2	10	1,823.67'	S11°10'13"E	N/A
2	101	1,539.52'	S65°36'48"E	N/A
3	4	56.88'	N11°53'56"W	56.8925' GRANT COUNTY SURVEY NO. 1821
3	101	560.42'	N84°32'59"W	N/A
4	101	546.17'	S89°44'45"W	N/A
100 RESET	101	827.35'	S71°14'18"E	N/A
100 RESET	102	416.80'	S42°18'09"E	N/A
101	102	504.61'	S85°12'29"W	N/A

BASIS OF BEARING AND  
CONTROL NETWORK SCHEMATIC  
NOT TO SCALE

LEGEND	
	SET NETWORK POINT
	FOUND MONUMENT USED AS NETWORK POINT
	LINES OF OBSERVATION

REGISTERED  
PROFESSIONAL  
LAND SURVEYOR

*Robert E. Butler*

OREGON  
July 25, 1995  
ROBERT ERICH BUTLER  
2733

EXPIRES: 12/31/2013

NETWORK POINT COORDINATE TABLE

PT. NO.	GRID NORTHING'S	GRID EASTING	DATE	DESCRIPTION
NET 1	276293.368	8573403.753	6/20/2012	FOUND 5/8" IRON ROD WITH 1 1/2" ALUMINUM CAP, STAMPED "APA OR 2537 WA 35140 NET 1", FLUSH WITH THE GROUND
NET 2	276239.960	8573405.910	6/20/2012	FOUND 5/8" IRON ROD WITH 1 1/2" ALUMINUM CAP, STAMPED "APA OR 2537 WA 35140 NET 2", BURIED 4" BELOW GROUND
NET 3	275551.071	8575365.960	6/20/2012	FOUND 5/8" IRON ROD WITH 1 1/2" ALUMINUM CAP, STAMPED "APA OR 2537 WA 35140 NET 3", BURIED 3" BELOW GROUND
NET 4	275606.728	8575354.233	6/20/2012	FOUND 5/8" IRON ROD WITH 1 1/2" ALUMINUM CAP, STAMPED "APA OR 2537 WA 35140 NET 4", BURIED 1" BELOW GROUND
100 RESET	275870.415	8574024.704	6/20/2012	SET 5/8" X 30" IRON ROD WITH 1 1/2" DIA. ALUMINUM CAP STAMPED "ODOT, 100 RESET, 2012"
101	275604.305	8574808.072	6/20/2012	FOUND 5/8" IRON ROD WITH 1 1/2" DIA. ALUMINUM CAP INSCRIBED "ODOT 2001 101", FLUSH WITH THE GROUND
102	275562.152	8574305.225	6/20/2012	FOUND 5/8" IRON ROD WITH 1 1/2" DIA. ALUMINUM CAP INSCRIBED "ODOT 2001 102", FLUSH WITH THE GROUND

OREGON DEPARTMENT OF TRANSPORTATION

RIGHT-OF-WAY NETWORK MONUMENTATION MAP



COLES BRIDGE NO. 07696  
JOHN DAY HIGHWAY NO. 5  
(U.S. 26 & U.S. 395)  
GRANT COUNTY

ODOT REGION 5  
3012 ISLAND AVE.  
LA. GRANDE, OR. 97850-9497

JUNE 20, 2012  
SHEET 1 OF 2