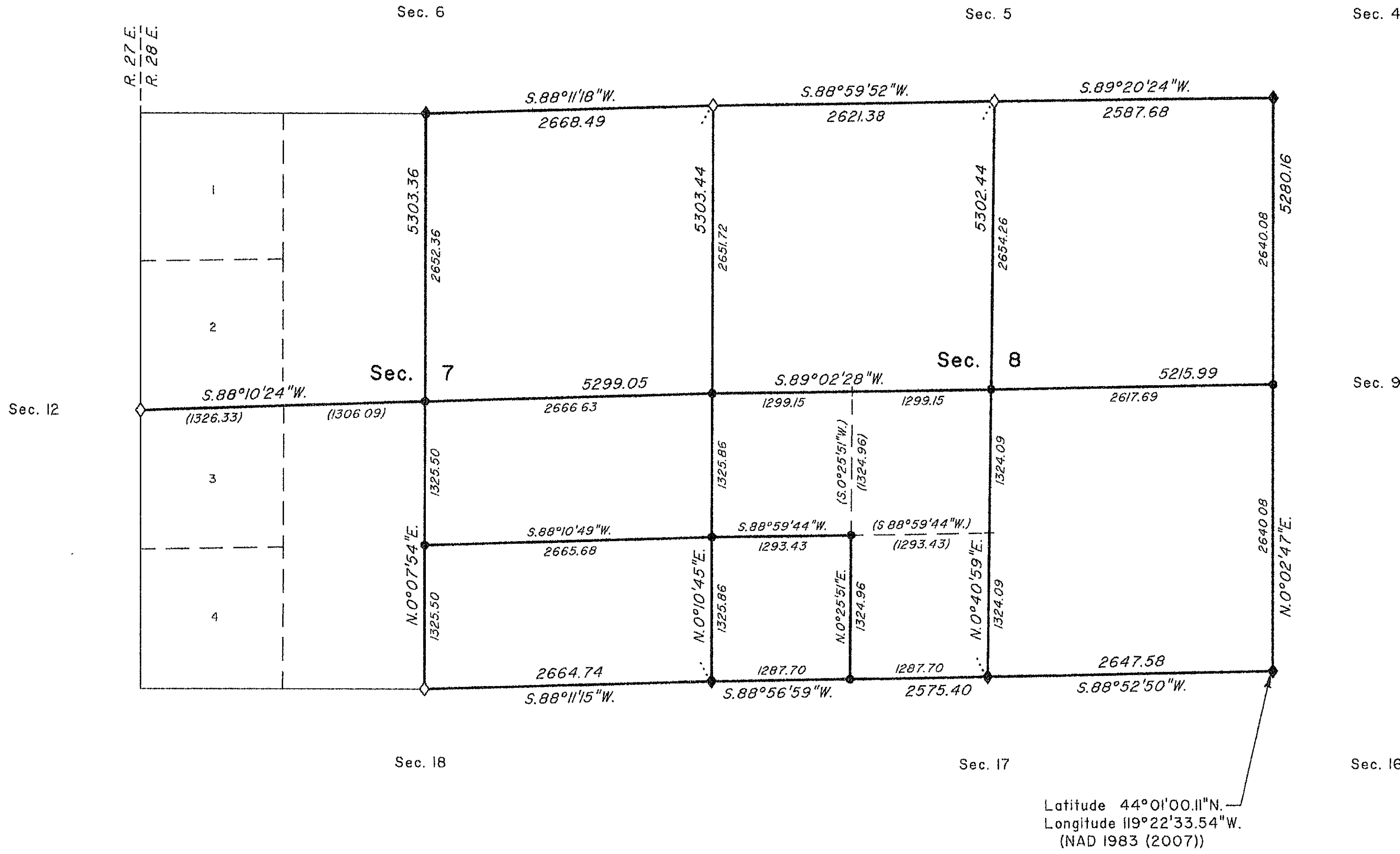
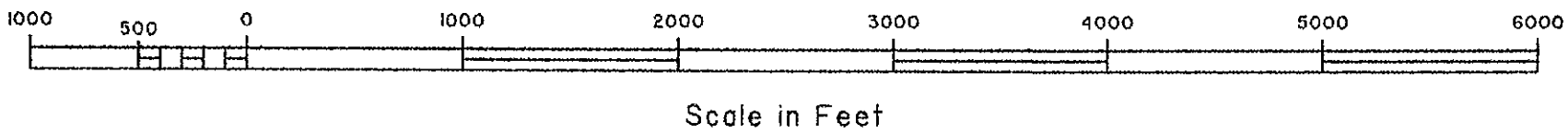


TOWNSHIP 18 SOUTH, RANGE 28 EAST, OF THE WILLAMETTE MERIDIAN, OREGON
DEPENDENT RESURVEY AND SUBDIVISION OF SECTIONS



LEGAL SUBDIVISION	OFFICIAL ACRES
SECTION 7	
SW 1/4 SE 1/4	40.53
SE 1/4 SE 1/4	40.53
SECTION 8	
SW 1/4 SW 1/4	39.26



A history of surveys, corner descriptions and other relevant information is contained in the field notes.

This plat represents the dependent resurvey of portions of the subdivisional lines, designed to restore the corners in their true original locations according to the best available evidence, and the subdivision of sections 7 and 8, T. 18 S., R. 28 E., Willamette Meridian, Oregon.

Official area based on the measurements of this survey have been returned for Federal interest land where indicated. Aliquot part legal subdivisions retain their aliquot characteristics and refer to precisely the same land as that which was previously identified by its original survey or description. A lot can only be subdivided by survey or supplemental plat. Except as indicated hereon, the lottings and areas are as shown on the plat approved August 2, 1884 and accepted August 20, 1884.

Survey executed by Nathan C. Erickson, Cadastral Surveyor, beginning June 15, 2010, and completed June 30, 2010, pursuant to special instructions approved June 3, 2010, for Group No. 2334, Oregon.

LEGEND

- ◊ Original corner previously remonumented
- ◆ Original corner remonumented this survey
- Corner established or reestablished this survey
- + Corner point calculated, no monument set
- () Calculated bearing and distance

UNITED STATES DEPARTMENT OF THE INTERIOR
BUREAU OF LAND MANAGEMENT
Portland, Oregon

This plat is strictly conformable to the approved field notes, and the survey, having been correctly executed in accordance with the requirements of law and the regulations of this Bureau, is hereby accepted.

For the Director
Mary J. M. Hartzel

Chief Cadastral Surveyor of Oregon

RECEIVED AND FILED
GRANT COUNTY SURVEYOR

AUG 19 2011

By: *[Signature]*

June 23, 2011
Date

OFFICIALLY FILED: 8/12/2011