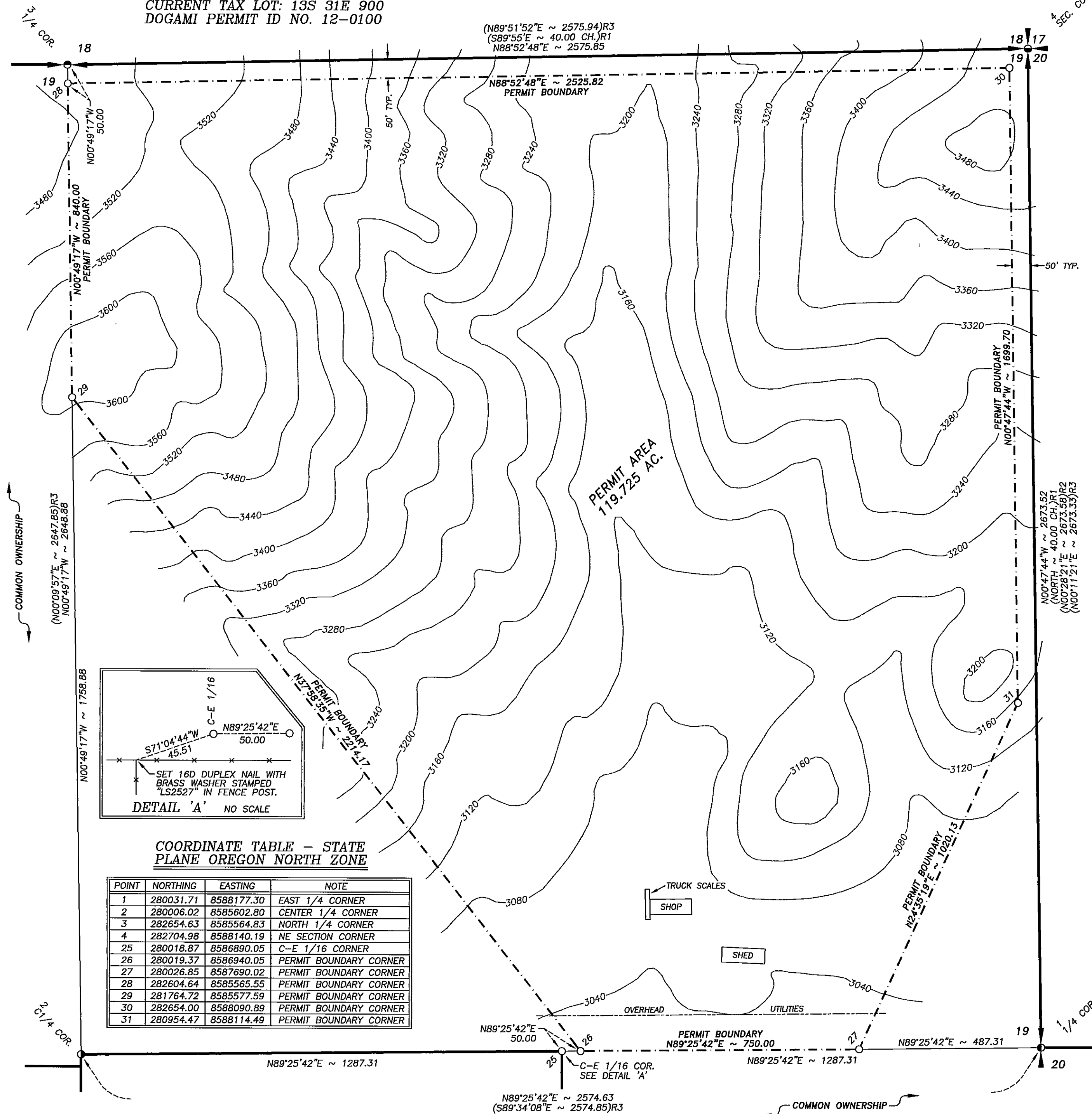


LOCATION MAP OF KING RANCH QUARRY

IN THE NE1/4 OF SECTION 19, T13S, R31E, W.M., GRANT COUNTY, OREGON
 CURRENT LANDOWNER: JESS W. FITZHUGH & DAVID J. BALDWIN
 CURRENT TAX LOT: 13S 31E 900
 DOGAMI PERMIT ID NO. 12-0100



COORDINATE TABLE - STATE PLANE OREGON NORTH ZONE

POINT	NORTHING	EASTING	NOTE
1	280031.71	8588177.30	EAST 1/4 CORNER
2	280006.02	8585602.80	CENTER 1/4 CORNER
3	282654.63	8585564.83	NORTH 1/4 CORNER
4	282704.98	8588140.19	NE SECTION CORNER
25	280018.87	8586890.05	C-E 1/16 CORNER
26	280019.37	8586940.05	PERMIT BOUNDARY CORNER
27	280026.85	8587690.02	PERMIT BOUNDARY CORNER
28	282604.64	8585565.55	PERMIT BOUNDARY CORNER
29	281764.72	8585577.59	PERMIT BOUNDARY CORNER
30	282654.00	8588090.89	PERMIT BOUNDARY CORNER
31	280954.47	8588114.49	PERMIT BOUNDARY CORNER

LEGEND

- FOUND 2 1/2" BRASS CAP ON IRON PIPE IN MOUND OF STONE SET PER MAP OF SURVEY NO. 304. ALL ACCESSORIES PER CORNER RESTORATION N-5 REMAIN. CAP IS MARKED "GRANT COUNTY SURVEYOR T13S R31E S18 S17 S19 S20 1973 PLS 598". FENCE CORNER RUNNING N-S & W BEARS APPROXIMATELY S80°W ~ 17.0 FEET FROM FOUND MONUMENT. SEE COORDINATE TABLE.
- FOUND 2 1/2" ALUMINUM CAP ON ALUMINUM PIPE IN MOUND OF STONE SET PER PARTITION PLAT NO. 99-15. ALL ACCESSORIES PER CORNER RESTORATION N-3 REMAIN. CAP IS MARKED "T13S R31E 1/4 S18 S19 1998 PLS 848". FENCE LINE RUNNING E-W IS APPROXIMATELY 5.5 FEET SOUTH. SEE COORDINATE TABLE.
- FOUND 2 1/2" BRASS CAP ON IRON PIPE AT FENCE CORNER RUNNING N & E SET PER MAP OF SURVEY NO. 1322. BT ACCESSORIES PER CORNER RESTORATION P-5 REMAIN - REBARS NOT SEARCHED FOR. CAP IS MARKED "T13S R31E 1/4 S19 S20 LS2632 1992". SEE COORDINATE TABLE.
- FOUND 2 1/2" ALUMINUM CAP ON ALUMINUM PIPE SET PER PARTITION PLAT NO. 99-15. ALL ACCESSORIES PER CORNER RESTORATION P-3 REMAIN. CAP IS MARKED "T13S R31E C1/4 S19 1998 PLS 848". FENCE CORNER RUNNING E-W & S IS APPROXIMATELY 33 FEET SOUTH. SEE COORDINATE TABLE.
- #○ SET 5/8" x 24" IRON ROD WITH YELLOW PLASTIC CAP MARKED "LS2527". REFER TO RESPECTIVE POINT NUMBER IN COORDINATE TABLE.
- PROPERTY BOUNDARY LINE.
- - - PERMIT BOUNDARY LINE. SET INTER VISIBLE 5' TALL STEEL FENCE POSTS ON LINE AT INTERVALS NOT EXCEEDING 200 FEET. PERMIT AREA = 119.725 ACRES.
- DIMENSION LINE.
- ()R1 RECORD DATA PER ORIGINAL GLO SURVEY BY JOHN B. DAVID UNDER CONTRACT NO. 131 DATED JULY 1869.
- ()R2 RECORD DATA PER MAP OF SURVEY NO. 1322 BY CARL J. STOUT FILED 09/22/94.
- ()R3 RECORD DATA PER PARTITION PLAT NO. 99-15 BY DOUGLAS M. FERGUSON FILED 06/17/99.
- DOGAMI STATE OF OREGON DEPARTMENT OF GEOLOGY AND MINERAL INDUSTRIES.

BASIS OF BEARINGS

BASE BEARING DETERMINED FROM THE SOUTH LINE OF THE NE1/4 OF SECTION 19 PER STATIC GPS OBSERVATIONS COLLECTED ON THE CENTER 1/4 CORNER AND THE EAST 1/4 CORNER. CONTINUOUS DATA WAS COLLECTED FOR 4 HOURS ON EACH POINT AND POST PROCESSED BY OPUS RESULTING IN THE FOLLOWING PARAMETERS. REAL TIME OBSERVATIONS WERE THEN USED AND INDEPENDENTLY CHECKED WITH CONVENTIONAL SURVEY METHODS.

CENTER 1/4 CORNER:
 LATITUDE: 44°25'30.51173" N.
 LONGITUDE: 119°01'54.92319" W.
 STATE PLANE NORTHING: 85346.006 M.
 STATE PLANE EASTING: 2616896.967 M.
 GEOID: GEOID09
 COMBINED SCALE: 0.99983395

EAST 1/4 CORNER:
 LATITUDE: 44°25'30.30268" N.
 LONGITUDE: 119°01'19.45317" W.
 STATE PLANE NORTHING: 85353.836 M.
 STATE PLANE EASTING: 2617681.678 M.
 GEOID: GEOID09
 COMBINED SCALE: 0.99983641

NARRATIVE

THE PURPOSE OF THIS SURVEY WAS TO DEFINE THE LIMITS OF DEPARTMENT OF GEOLOGY AND MINERAL INDUSTRIES (DOGAMI) PERMIT NO. 12-0100 BY MONUMENTING THE CORNERS AND POSTING THE BOUNDARIES. STATE PLANE COORDINATES WERE UTILIZED THIS SURVEY PER DOGAMI REQUIREMENTS. RECORD SURVEYS INCLUDED ORIGINAL GLO, MOS 304, MOS 1322, MOS 1544 AND PARTITION PLAT NO. 99-15. FOUND MONUMENTS WERE TIED AND HELD AT THE NORTH 1/4 CORNER, NORTHEAST SECTION CORNER AND EAST 1/4 CORNER OF THE SECTION AS NOTED HEREON. THESE CONTROLLED THE NORTH AND EAST PROPERTY BOUNDARIES OF THIS PORTION OF TAX LOT 900 AS SHOWN. THE CENTER 1/4 CORNER WAS ALSO FOUND AND HELD AS NOTED AND THEN THE C-E 1/16 CORNER WAS CALCULATED PER INSTRUCTIONS. THE C-E 1/16 CORNER WAS SET IN ORDER TO MARK THIS PORTION OF THE SOUTH PROPERTY BOUNDARY. THE PERMIT BOUNDARY WAS ESTABLISHED PER THE LANDOWNERS INSTRUCTIONS AND SUBSEQUENTLY MARKED PER DOGAMI REQUIREMENTS.

GENERAL NOTES

- CURRENT GRANT COUNTY LAND USE ZONING FOR THIS PORTION OF THE PARCEL IS MUR (MULTIPLE USE RANGE).
- CONTOURS SHOWN ARE APPROXIMATE ONLY. THEY WERE BASED UPON A USGS QUAD MAP OVERLAY.

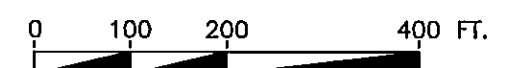
RECEIVED AND FILED
 GRANT COUNTY SURVEYOR

JUN 20 2011

BY: *[Signature]*
 REGISTERED
 PROFESSIONAL
 LAND SURVEYOR

Henry D. Stichter 6/14/11
 OREGON
 JULY 25, 1991
 JERRY D. STICHLER
 2527
 RENEWAL 6/30/12

SCALE 1" = 200'



PREPARED FOR:
 TIDEWATER CONTRACTORS, INC.
 P.O. BOX 1956
 BROOKINGS, OREGON 97415

PREPARED BY:
 PRECISION LAND SURVEYING, INC.
 P.O. BOX 2062
 REDMOND, OREGON 97756
 (541) 548-6092
 JUNE 14, 2011 SHEET 1 OF 1

DRAWN BY: J.S. JOB NO. 11/13
 EDSC: KR PERMIT ACAD: 1113FBNDY

MAP OF SURVEY NO. 1924