

NARRATIVE

SW¼ AND SE¼ SEC. 21, T. 13 S., R. 30 E., W.M.  
NW¼ AND NE¼ SEC. 28, T. 13 S., R. 30 E., W.M.  
GRANT COUNTY, OREGON

PURPOSE

THE PURPOSE OF THIS SURVEY IS TO UTILIZE ODOT 'S HORIZONTAL CONTROL NETWORK AS  
DEFINED IN O.R.S.209.155 TO: 1) RESOLVE THE CENTERLINES AND EXISTING RIGHT-OF-WAY LINES  
FOR PORTIONS OF THE JOHN DAY HIGHWAY AND THE PENDLETON - JOHN DAY HIGHWAY, 2) SHOW  
NEWLY ACQUIRED RIGHT-OF-WAY ALONG THIS HIGHWAY ALIGNMENT, AND 3) SHOW RECOVERED MONUMENTS.

BASIS OF BEARINGS/ COORDINATES

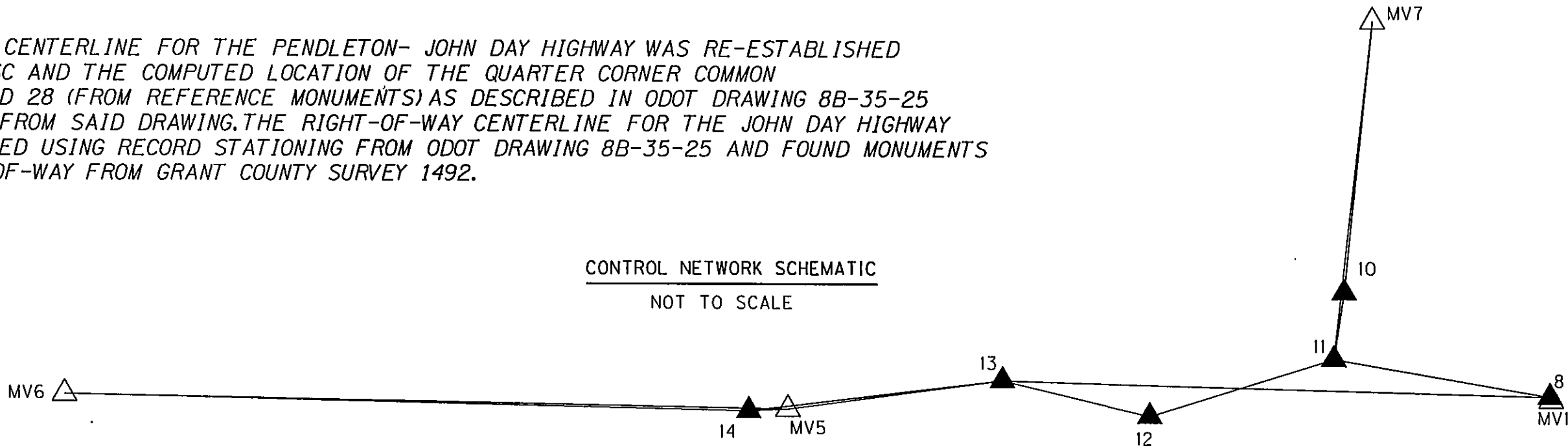
THE BASIS OF BEARINGS FOR THIS SURVEY IS THE OREGON COORDINATE SYSTEM (OCS) OF 1983, NORTH ZONE.  
DATA WAS PROCESSED TO A LOCAL DATUM PLANE (LDP) RELATIVE TO OCS WITH RESPECT TO THE LOCAL  
LATITUDE AND GROUND ELEVATIONS. THE COORDINATES SHOWN HEREON ARE LDP COORDINATES REPRESENTING  
GROUND DISTANCES. TO CONVERT BACK TO OCS, MULTIPLY THE LDP VALUES BY 0.99984256.

REFERENCE MATERIALS

THE ODOT RIGHT-OF-WAY MAPS USED FOR THIS SURVEY INCLUDE MAPS 3B-17-14, 7B-20-06, AND 8B-35-25 AND  
ODOT FILES 21715 AND 25891. GRANT COUNTY MAPS FILED WITH THE GRANT COUNTY SURVEYOR AND USED  
FOR THIS SURVEY INCLUDE COUNTY SURVEY NUMBERS 386, 425, 515, 625, 819, 1492 AND THE CORNER  
RESTORATION SHEET FOR THE QUARTER CORNER COMMON TO SECTIONS 21 AND 28.

RESOLUTION

THE RIGHT-OF-WAY CENTERLINE FOR THE PENDLETON- JOHN DAY HIGHWAY WAS RE-ESTABLISHED  
USING MONUMENT PSC AND THE COMPUTED LOCATION OF THE QUARTER CORNER COMMON  
TO SECTIONS 21 AND 28 (FROM REFERENCE MONUMENTS) AS DESCRIBED IN ODOT DRAWING 8B-35-25  
AND RECORD DATA FROM SAID DRAWING. THE RIGHT-OF-WAY CENTERLINE FOR THE JOHN DAY HIGHWAY  
WAS RE-ESTABLISHED USING RECORD STATIONING FROM ODOT DRAWING 8B-35-25 AND FOUND MONUMENTS  
ALONG THE RIGHT-OF-WAY FROM GRANT COUNTY SURVEY 1492.



LEGEND	
	FOUND NETWORK POINT
	SET NETWORK POINT

PT. NO.	LDP NORTHING	LDP EASTING	STATION	OFFSET	DATE	DESCRIPTION & REFERENCE DOCUMENTS
MV1	276,962.88	8,566,033.01	12+02.96	25.60 RT.	6/25/07	FOUND 8" LONG SPIRAL CONC. SPIKE
MV5	276,947.87	8,564,805.64	1410+73.38	18.93 RT.	6/25/07	FOUND 8" LONG SPIRAL CONC. SPIKE
MV6	276,970.02	8,563,642.65	1399+10.94	24.23 LT.	6/25/07	FOUND 8" LONG SPIRAL CONC. SPIKE
MV7	277,572.28	8,565,746.63	524+19.39	1379 LT.	6/25/07	FOUND MAG. NAIL IN PAVEMENT
8	276,969.04	8,566,032.89	12+02.95	19.44 RT.	6/15/10	SET 5/8" X 30" IRON ROD W/ ALUM. CAP MKD. "ODOT"
10	277,136.82	8,565,701.47	528+56.88	23.94 RT.	6/15/10	SET 5/8" X 30" IRON ROD W/ ALUM. CAP MKD. "ODOT"
11	277,029.32	8,565,685.07	1419+54.14	46.61 LT.	6/15/10	SET 5/8" X 30" IRON ROD W/ ALUM. CAP MKD. "ODOT"
12	276,937.77	8,565,389.56	1416+57.02	39.56 RT.	6/15/10	SET 5/8" X 30" IRON ROD W/ ALUM. CAP MKD. "ODOT"
13	276,994.27	8,565,150.85	1414+19.38	21.22 RT.	6/15/10	SET 5/8" X 30" IRON ROD W/ ALUM. CAP MKD. "ODOT"
14	276,944.82	8,564,742.21	1410+09.91	20.84 RT.	6/15/10	SET 5/8" X 30" IRON ROD W/ ALUM. CAP MKD. "ODOT"

RECEIVED AND FILED  
GRANT COUNTY SURVEYOR

FEB 25 2011

BY:

ENGLISH OREGON DEPARTMENT OF TRANSPORTATION  
RIGHT-OF-WAY NETWORK  
MONUMENTATION MAP  
US 26: MAIN ST. SIDEWALKS AND  
STREETSCAPE (MT, VERNON)  
JOHN DAY HIGHWAY  
GRANT COUNTY  
FOR ODOT REGION 5  
3012 ISLAND AVENUE  
LA GRANDE, OR 97850  
NOVEMBER 22, 2010  
NOT TO SCALE  
SHEET 1 OF 2