

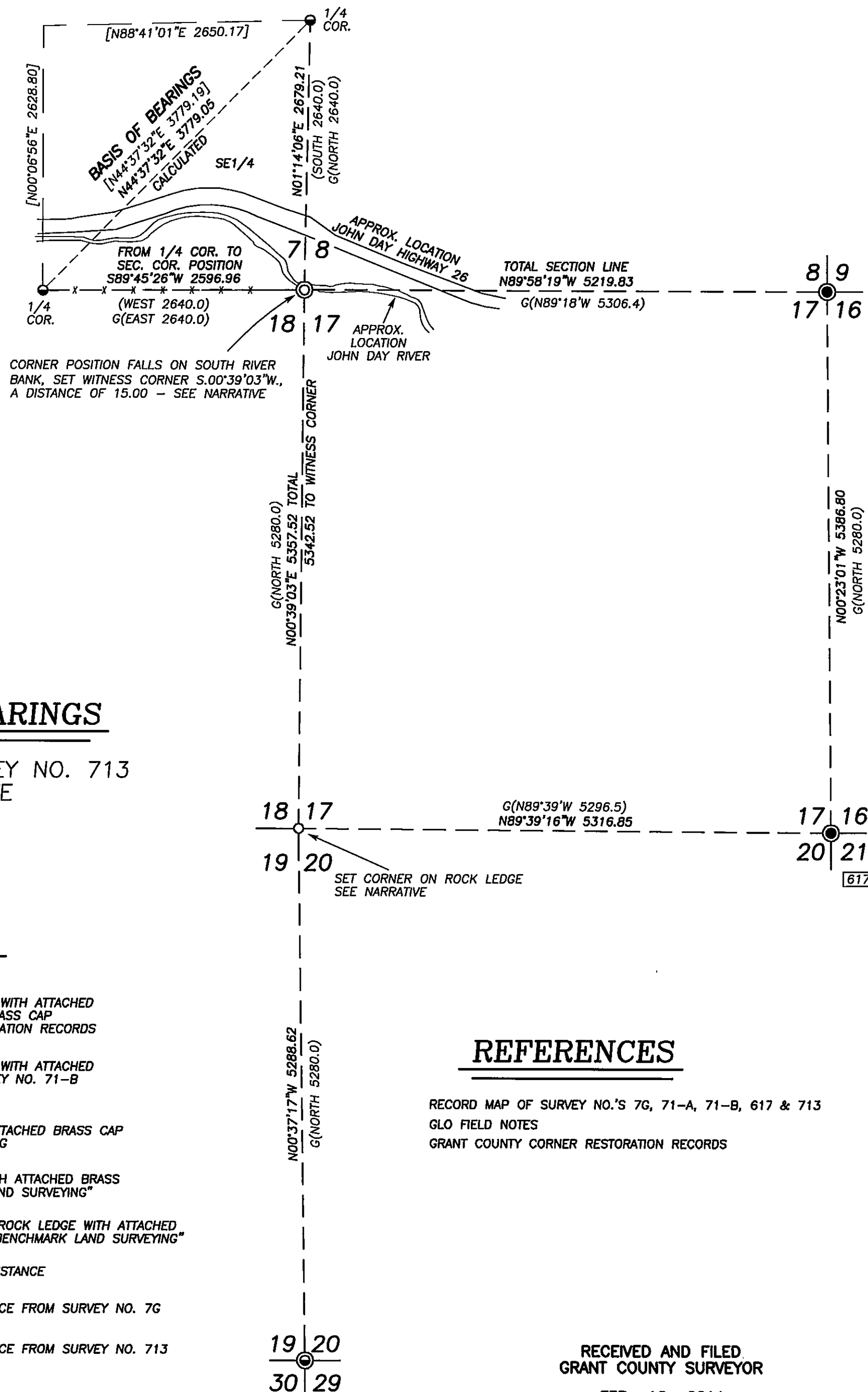


## BASIS OF BEARINGS

RECORD MAP OF SURVEY NO. 713  
SEE NARRATIVE

## LEGEND

- FOUND 1 1/2" GALV. IRON PIPE WITH ATTACHED GRANT COUNTY SURVEYOR BRASS CAP  
SEE COUNTY CORNER RESTORATION RECORDS
- ⊙ FOUND 2 1/2" GALV. IRON PIPE WITH ATTACHED BLM BRASS CAP FROM SURVEY NO. 71-B
- FOUND 1" IRON PIPE WITH ATTACHED BRASS CAP  
FROM RECORD SURVEY NO. 7G
- ⊙ SET 1 1/2" GALV. IRON PIPE WITH ATTACHED BRASS CAP MARKED "BENCHMARK LAND SURVEYING"
- SET 5/8"x6" IRON PIN INTO ROCK LEDGE WITH ATTACHED 2" ALUMINUM CAP MARKED "BENCHMARK LAND SURVEYING"
- G ( ) GLO RECORD BEARING AND DISTANCE
- ( ) RECORD BEARING AND DISTANCE FROM SURVEY NO. 7G
- [ ] RECORD BEARING AND DISTANCE FROM SURVEY NO. 713
- FOUND MONUMENT FROM RECORDED SURVEY NO.
- X—X FENCE LINE



## REFERENCES

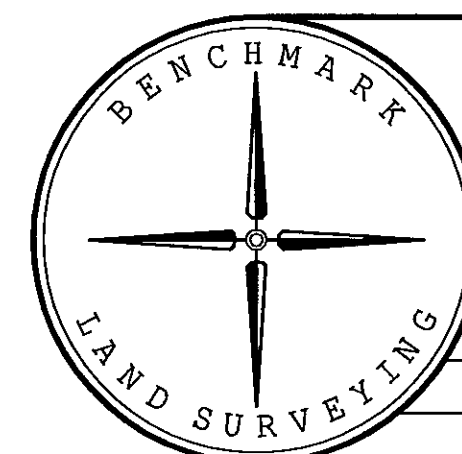
RECORD MAP OF SURVEY NO.'S 7G, 71-A, 71-B, 617 & 713  
GLO FIELD NOTES  
GRANT COUNTY CORNER RESTORATION RECORDS

RECEIVED AND FILED  
GRANT COUNTY SURVEYOR  
FEB 16 2011

BY: *[Signature]*

REGISTERED  
PROFESSIONAL  
LAND SURVEYOR

OREGON  
JULY 9, 2002  
MICHAEL C. SPRINGER  
#70918  
EXPIRES: 6/30/2012



## NARRATIVE

THIS SURVEY WAS PERFORMED AT THE REQUEST OF JIM DOVENBERG. THE PURPOSE OF THIS SURVEY WAS TO MONUMENT AND POST WITH LATH AND FLAGGING, THE EAST HALF OF THE SECTION LINE BETWEEN SECTIONS 7 AND 18, T.13S., R.28E., W.M.

A SEARCH WAS MADE OF THE AVAILABLE EVIDENCE PERTAINING TO THIS SURVEY. I FOUND THE FOLLOWING RECORD SURVEYS:

THE ORIGINAL GLO SURVEY BY WILLIAM BYARS, DEPUTY SURVEYOR IN JULY 1873. BYARS SUBDIVIDED TOWNSHIP 13S., R.28E.

SURVEY NO. 7G BY VERNON GLAZE IN 1914. DURING HIS SURVEY, GLAZE REMONUMENTED OR ESTABLISHED MANY CORNERS IN THE VICINITY OF THIS SURVEY INCLUDING THE S1/4, E1/4 AND SE CORNERS OF SECTION 7.

SURVEY NO.'S 71-A AND 71-B BY HANS THIELSEN, CADASTRAL SURVEYOR FOR THE BLM IN 1957. DURING HIS SURVEY, THIELSEN REMONUMENTED OR REESTABLISHED MANY CORNERS IN THE AREA INCLUDING THE SE CORNER OF SECTION 19.

SURVEY NO. 617 BY ROBERT BAGETT, PLS IN JUNE 1980. DURING HIS SURVEY, BAGETT FOUND AND REMONUMENTED THE SE CORNER OF SECTION 17.

SURVEY NO. 713 BY DOUGLAS FERGUSON, PLS IN APRIL 1982. DURING HIS SURVEY, FERGUSON LOCATED THE GLAZE MONUMENTS AT THE E1/4 CORNER AND S1/4 CORNER OF SECTION 7.

WE SEARCHED FOR, BUT DID NOT FIND THE GLAZE IRON PIPE MONUMENT AT THE NE CORNER OF SECTION 18 OR THE GLO MONUMENTS SET BY BYARS AT THE E1/4 CORNER SECTION 19 AND AT THE SE CORNER AND E1/4 CORNER OF SECTION 18.

BYARS FIELD NOTES STATE THAT HE SET THE SE CORNER OF SECTION 18 5280.0 FEET NORTH OF THE SE CORNER OF SECTION 19. THE CORNER WAS SET ON A ROCK LEDGE IN A LARGE MOUND OF STONE. I DID NOT FIND THE ORIGINAL MARKED STONE, BUT I DID FIND THE ROCK LEDGE MENTIONED IN BYARS' FIELD NOTES. I MEASURING TO THE NEAREST FOUND MONUMENTS TO THE SOUTH AND EAST, TO VERIFY THE POSITION OF THE LEDGE. THE LEDGE IS APPROXIMATELY 20 FEET LONG AND SIX TO EIGHT FEET WIDE. I SET THE NEW MONUMENT SHOWN HEREON NEAR THE MID POINT OF THE LEDGE AND APPROXIMATELY TWO FEET FROM THE EDGE.

I DETERMINED THE NE CORNER OF SECTION 18 TO BE LOST. I CALCULATED THE POSITION USING DOUBLE PROPORTIONATE METHOD BETWEEN THE MONUMENTS AT THE E1/4 CORNER SECTION 7 AND THE SE CORNER SECTION 18 AND BETWEEN THE S1/4 CORNER SECTION 7 AND THE SE CORNER SECTION 8, ACCORDING TO THE 2009 BLM MANUAL OF SURVEYING INSTRUCTIONS. THE CALCULATED POSITION FALLS ON THE FACE OF A BOULDER ON THE SOUTH BANK OF THE JOHN DAY RIVER. DO TO THE QUESTIONABLE STABILITY OF THE BOULDER, I SET A WITNESS CORNER S.00°39'05"W., 15.00 FEET.

PER MR. DOVENBERG'S INSTRUCTIONS, I POSTED THE LINE BETWEEN THE NE CORNER AND N1/4 CORNER OF SECTION 18.

THE BASIS OF BEARINGS FOR THIS SURVEY IS THE CALCULATED BEARING BETWEEN THE FOUND GLAZE MONUMENTS AT THE S1/4 CORNER AND E1/4 CORNER OF SECTION 7 BASED ON THE COURSES AND DISTANCES SHOWN ON RECORD SURVEY NO. 713: N.44°37'32"E., 3779.05 FEET.

SEE CORNER RESTORATION RECORDS FOR DETAILS ON THE SECTION CORNERS SET HEREON AND ACCESSORIES.

BENCHMARK LAND SURVEYING  
217 N. CANYON BLVD. JOHN DAY, OREGON  
2101 MAIN STREET, STE 223 BAKER CITY, OREGON  
541-575-1251 ~ 800-699-0516

MAP OF SURVEY  
DEPENDANT RESURVEY  
OF THE EAST 1/2 OF THE NORTH LINE OF SECTION 18,  
T.13S., R.28E., W.M.,  
GRANT COUNTY, OREGON

|                 |               |
|-----------------|---------------|
| SURVEYED FOR    | JIM DOVENBERG |
| SURVEYED BY     | MCS & JLH     |
| Scale: 1"=1000' | Drawn by: MCS |

RECORD MAP OF SURVEY NO. 1908