

*SURVEY OF OCHOCO NATIONAL FOREST BOUNDARY LINES IN THE SW 1/4 OF SECTION 14, IN THE NE 1/4 OF SECTION 19, IN THE NW 1/4 OF SECTION 20, IN THE SE 1/4 OF SECTION 27, IN THE E 1/2 OF SECTION 28, IN THE W 1/2 OF SECTION 31 AND IN THE NE 1/4 OF SECTION 34, TOWNSHIP 16 SOUTH, RANGE 26 EAST, W.M., GRANT COUNTY, OREGON
W.O. 09-3921 WILLOW CADASTRAL SURVEY CON. NO. AG-04NO-D-09-0012*

LEGEND

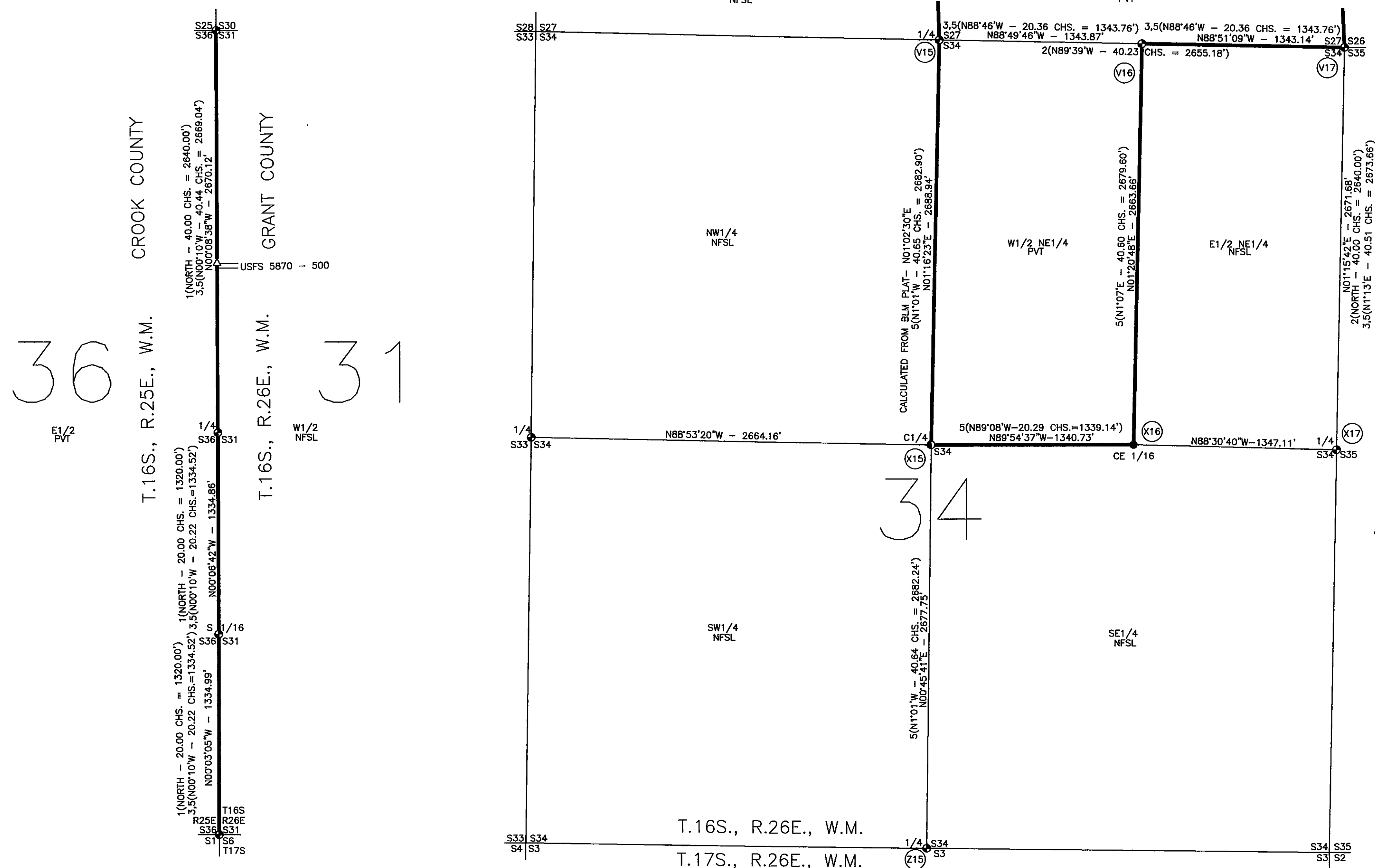
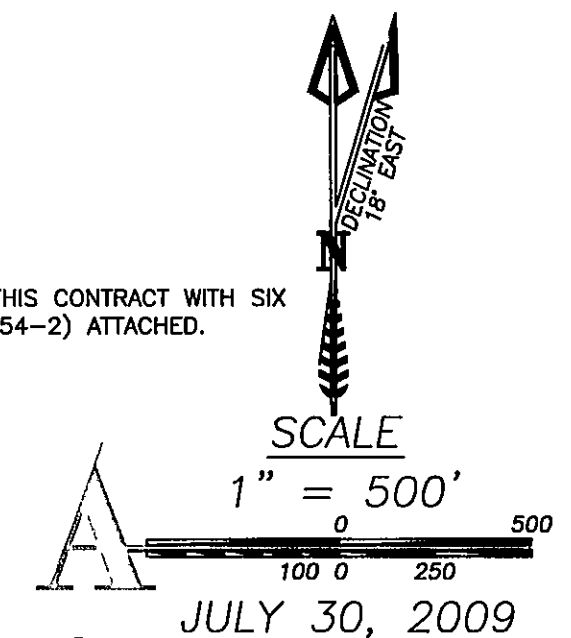
- SET 5/8 INS. X 30 INS. LONG IRON ROD WITH 3-1/4 INS. ALUMINUM CAP STAMPED AS SHOWN ON CORNER SUMMARY AT POSITION OF PALMER MONUMENT.
- ① FOUND 2-1/2 INS. O.D. GALVANIZED PIPE WITH 2-1/2 INS. BRASS CAP STAMPED AS SHOWN ON CORNER SUMMARY AS PER C.S. 62 BY M. A. PALMER, LS350, DATED 1964.
- ② FOUND 2-1/2 INS. O.D. GALVANIZED PIPE WITH 3-1/4 INS. BRASS CAP STAMPED AS SHOWN ON CORNER SUMMARY AS PER BLM DEPENDENT RESURVEY UNDER GROUP 359 BY C. ALBERT WHITE, DATED OCTOBER 18, 1957, PERFORMED 1959-1960, APPROVED MAY 1, 1962.

- 1() ORIGINAL GENERAL LAND OFFICE RECORD BY JASPER WILKINS, DEPUTY SURVEYOR, UNDER CONTRACT NO. 189 DATED JUNE 6, 1873.
- 2() ORIGINAL GENERAL LAND OFFICE RECORD BY ALONZO GESNER, DEPUTY SURVEYOR, UNDER CONTRACT NO. 206 DATED JULY 10, 1874.
- 3() RECORD AS PER BLM SURVEY BY C. ALBERT WHITE, CADASTRAL SURVEYOR, UNDER GROUP 359 OREGON DATED OCTOBER 18, 1957 AND APPROVED MAY 1, 1962.
- 5() RECORD AS PER C.S. 62 BY M. A. PALMER, LS350, RECORDED 1964.

(V19) CORNER MONUMENT NUMBER - SEE CORNER SUMMARY FOR INFORMATION

— INDICATES OCHOCO NATIONAL FOREST BOUNDARY LINES POSTED UNDER THIS CONTRACT WITH SIX FEET LONG ALUMINUM POSTS WITH NATIONAL FOREST BOUNDARY SIGNS (54-2) ATTACHED.

NFSL NATIONAL FOREST SYSTEM LAND
PVT PRIVATE LANDS
CHS. CHAINS
C.S. COUNTY SURVEY
Δ USFS LOCATION POSTER ON ROAD



REGISTERED
PROFESSIONAL
LAND SURVEYOR
David B. Armstrong
9/30/10 OREGON
AUGUST 22, 1975
DAVID B. ARMSTRONG
1028
Revised 12/31/11

ARMSTRONG
surveying & engineering, inc.
established 1977
SHEET 4 OF 7
DRG. NO. 10-3921.DWG
W.O. 09-3921
GRANT COUNTY SURVEY 1899