



LEGEND

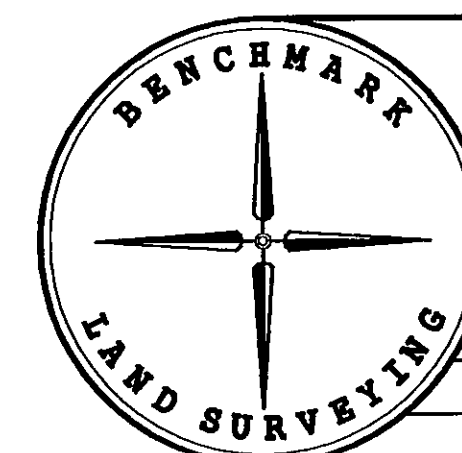
- ## BASIS OF BEARINGS

REFERENCES

RECEIVED AND
FILED
Sept. 23, 2009
OFFICE OF COUNTY SURVEYOR

[Signature]

ATTEST: *[Signature]*



<p align="center">MAP OF SURVEY</p> <p align="center">SITUATED IN THE SW1/4 SECTION 7, T.13S., R.33E., W.M., GRANT COUNTY, OREGON</p>		
SURVEYED FOR	KELLY AND BARBARA VOIGT	
SURVEYED BY	MCS & JLH	9/18/2009
Scale: 1"=200'	Drawn by: MCS	

RECORD MAP OF SURVEY NO. 1878