

BASIS OF BEARINGS

RECORD MAP OF SURVEY NO. 1443
AS SHOWN

REFERENCES

- RECORD MAP OF SURVEY NO.'S 2G, 7G, 107, 1050, 1443 & 1478
- DEED RECORD INSTRUMENT NO. 072174
- RECORD LAND PARTITION PLAT NO. 2007-15
- GENERAL LAND OFFICE SURVEY RECORDS
- GRANT COUNTY CORNER RESTORATION RECORDS

REGISTERED
PROFESSIONAL
LAND SURVEYOR

Jason L. Hatfield

OREGON
NOVEMBER 30, 2007
JASON L. HATFIELD
#69454
EXPIRES: 6/30/2011

RECEIVED AND
FILED

May 7, 2009
OFFICE OF COUNTY SURVEYOR

WRC

ATTEST: *Jason L. Hatfield*

LEGEND

- ⊕ FOUND 1" IRON PIPE WITH ATTACHED 2" BRASS CAP SET BY VERNON GLAZE FROM SURVEY NO. 7G
- ⊙ FOUND 2 1/2" ALUMINUM PIPE W/ ATTACHED 3 1/2" CAP FROM SURVEY NO. 1050 UNLESS OTHERWISE NOTED
- ⊙ SET 5/8"x30" IRON PIN WITH ATTACHED 2" ALUMINUM CAP MARKED "BENCHMARK LAND SURVEYING" AND WITH APPROPRIATE 1/4 CORNER DESIGNATIONS
- SET 5/8"x30" IRON PIN WITH ATTACHED YELLOW PLASTIC CAP MARKED BENCHMARK SURVEYING
- () G.L.O. RECORD BEARING AND DISTANCE FROM CONTRACT NO. 131
- 1() G.L.O. RECORD BEARING AND DISTANCE FROM CONTRACT NO. 185
- 2() G.L.O. RECORD BEARING AND DISTANCE FROM CONTRACT NO. 194
- 6[] RECORD BEARING AND DISTANCE FROM SURVEY NO. 7G
- [] RECORD BEARING AND DISTANCE FROM SURVEY NO. 107
- 1[] RECORD BEARING AND DISTANCE FROM SURVEY NO. 1050
- 2[] RECORD BEARING AND DISTANCE FROM SURVEY NO. 1443
- 3[] RECORD BEARING AND DISTANCE FROM SURVEY NO. 1478
- FOUND MONUMENT FROM RECORDED SURVEY NO. □

NARRATIVE

THIS SURVEY WAS PERFORMED AT THE REQUEST OF SARAH WHISENHUNT. THE PURPOSE OF THIS SURVEY WAS TO LOCATE AND MARK WITH PROPER MONUMENTS, THE NORTH-SOUTH CENTER OF SECTION LINE AND A PORTION OF THE EAST LINE OF THE W1/2W1/2E1/2NE1/4 OF SECTION 36, T.12S., R.26E., W.M.

A SEARCH WAS MADE OF THE AVAILABLE RECORDS PERTAINING TO THIS SURVEY. FIELD MEASUREMENTS WERE MADE TO LOCATE EXISTING MONUMENTS FROM RECORD SURVEY NO. 2G, 7G, 1050, 1443 AND 1478.

DURING SURVEY NO. 2G PERFORMED BY VERNON GLAZE IN 1913, GLAZE'S FIELD NOTES INDICATE THAT HE OCCUPIED THE W1/4 CORNER OF SAID SECTION 36 WHILE SUBDIVIDING SECTION 35. HIS PLAT NOTES THAT THE CORNER WAS BURIED IN THE COUNTY ROAD AND THAT THERE WERE WITNESS ROCKS ON EACH SIDE OF THE ROAD. WE SEARCHED FOR, BUT FOUND NO REMAINING EVIDENCE OF THIS CORNER OR THE ACCESSORIES NOTED IN SURVEY 2G. I ESTABLISHED THE POSITION BY SINGLE PROPORTIONATE MEASURE BETWEEN THE FOUND MONUMENTS AT THE NW CORNER AND THE SW CORNER OF SAID SECTION 36, AS SHOWN.

THE SOUTHEAST CORNER OF SECTION 36 WAS MONUMENTED BY DOUGLAS FERGUSON, PLS DURING SURVEY NO. 1050, FILED IN 1988. WE FOUND THIS MONUMENT DISTURBED, AND REESTABLISHED ITS POSITION BASED ON THE RECORD PINS FERGUSON SET AS ACCESSORIES TO THIS CORNER. WE ALSO FOUND A VERNON GLAZE MONUMENT N57°W 1.4 FEET FROM FERGUSON'S CORNER POSITION. GLAZE'S CAP WAS NOT ORIENTED CORRECTLY, AND APPEARS TO HAVE BEEN RESET BY A LAYMEN. FERGUSON'S RECORD STATES THAT HE FOUND A 1 1/2" PIPE IN THE MOUND LOOSE, BUT MAKES NO MENTION OF A GLAZE BRASS CAP. ALTHOUGH GLAZE'S RECORD STATES THAT HE HAD MONUMENTED THIS CORNER DURING SURVEY 7G, IT IS APPARENT THAT GLAZE'S MONUMENT HAS SINCE BEEN MOVED AND THEREFOR I DO NOT ACCEPT IT.

THE SOUTH QUARTER CORNER OF SECTION 36 WAS REESTABLISHED BY ELTON SAUNDERS, PLS DURING SURVEY NO. 107. I FIND NO REMAINING EVIDENCE OF THIS CORNER, AS IT FALLS IN A PLOWED FIELD. I ESTABLISH ITS POSITION BY SINGLE PROPORTIONATE MEASURE BETWEEN THE FOUND MONUMENTS FROM SURVEY NO. 1050 AT THE SE CORNER AND THE SW CORNER OF SAID SECTION 36, AS SHOWN.

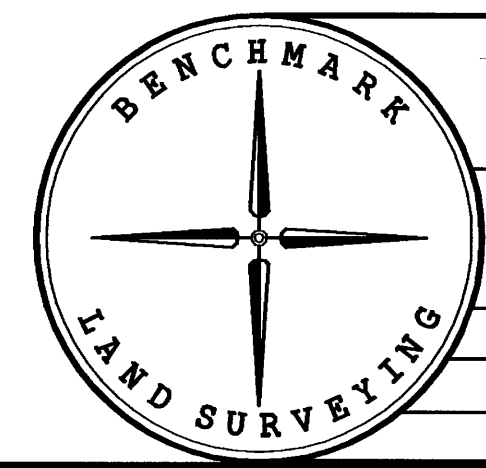
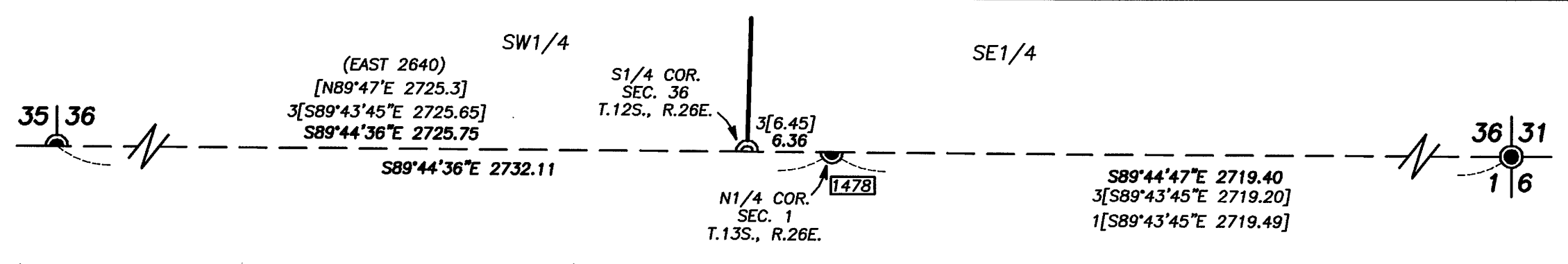
I SUBDIVIDED SECTION 36 IN ACCORDANCE WITH THE METHODS OUTLINED IN THE 1973 B.L.M. MANUAL OF INSTRUCTIONS. WE SET MONUMENTS AT POSITIONS ACCORDING TO THE EVIDENCE FOUND, AS SHOWN HEREON.

WE POSTED THE WEST LINE OF THE SE1/4 AND THE EAST LINE OF THE W1/2W1/2E1/2NE1/4 BETWEEN MONUMENTS USING STEEL FENCE POSTS.

SEE CORNER RESTORATION RECORDS FILED IN THE OFFICE OF THE GRANT COUNTY SURVEYOR, WHICH ARE AN INTEGRAL PART OF THIS SURVEY, DETAILING NEW MONUMENTS SET WITH NEW CORNER ACCESSORIES.

DETAIL

SCALE: 1"=10'



BENCHMARK LAND SURVEYING 217 N. CANYON BLVD. JOHN DAY, OREGON 2101 MAIN STREET, STE 223 BAKER CITY, OREGON 541-575-1251 ~ 800-699-0516		
MAP OF SURVEY DEPENDANT RESURVEY AND SUBDIVISION OF SECTION 36, T.12S., R.26E., W.M. GRANT COUNTY, OREGON		
SURVEYED FOR	SARAH WHISENHUNT	
SURVEYED BY	JLH & MCS	5/5/2009
Scale: 1"=500'	Drawn by: JLH	