

NARRATIVE

THIS SURVEY WAS PERFORMED AT THE REQUEST OF JESSE MADDEN. THE PURPOSE OF THIS SURVEY WAS TO LOCATE AND MONUMENT THE CORNERS OF THE SW1/4SE1/4NE1/4 AND THE NE1/4SE1/4, SECTION 26, T.13S., R.31E., W.M.

A SEARCH WAS MADE OF THE AVAILABLE RECORDS PERTAINING TO THIS SURVEY. FIELD MEASUREMENTS WERE MADE TO LOCATE EXISTING MONUMENTS FROM RECORD SURVEY NO.'S 361 AND 1609. WE ALSO RECOVERED TWO 10\"X10\"X5\" CONCRETE POST MONUMENTS AT THE N1/16 CORNER AND AT THE NE1/16 CORNER THAT HAVE BEEN ACCEPTED LOCALLY FOR MANY YEARS. BOTH OF THESE POSTS HAD FENCE WIRE STRUNG TO THEM, AND WERE LEANING BADLY. WE TIED THE CENTER OF THE POSTS AT GROUND LEVEL. THE CONDITION OF THESE MONUMENTS MAY ACCOUNT FOR THE DIFFERENCE IN MY FOUND MEASUREMENTS VERSUS THE RECORD MEASUREMENTS. I ACCEPT THE POSITION OF THESE CONCRETE POSTS AS WELL AS THE FOUND MONUMENTS FROM THE ABOVE MENTIONED SURVEYS.

THE BUREAU OF LAND MANAGEMENT PERFORMED A DEPENDENT RESURVEY AND SUBDIVISION OF SECTION 28 IN 1971, WHICH WAS FILED IN THE COUNTY SURVEYOR'S RECORDS AS MAP OF SURVEY NO. 286. THIS SURVEY WAS CONTESTED BY THE GRANT COUNTY SURVEYOR, AS WELL AS THE CITY OF CANYON CITY, THE CITY OF JOHN DAY AND GRANT COUNTY. THIS WAS DUE TO THE FACT THAT SEVERAL ORIGINAL CORNER MONUMENTS WHICH HAVE BEEN LOCALLY ACCEPTED FOR MANY YEARS WERE NOT CONSIDERED IN THE B.L.M. SURVEY. THESE CORNERS WERE CONSIDERED LOST BY THE B.L.M., AND PROPORTIONATE MEASURE WAS UTILIZED TO REESTABLISH THEM. A RELIANCE UPON THESE B.L.M. CORNERS COULD POTENTIALLY CLOUD THE TITLES OF MANY LANDOWNERS WHOSE DESCRIPTIONS ARE TIED TO THE ORIGINAL MONUMENTS. I FOUND MONUMENTS FROM THE B.L.M. SURVEY AT THE S1/16TH, SE1/16TH, AND CE1/16TH CORNERS, WHICH I DO NOT ACCEPT, AS SHOWN HEREON.

I SUBDIVIDED THE SE1/4NE1/4 AND THE SE1/4 OF SAID SECTION 26 IN ACCORDANCE WITH THE METHODS OUTLINED IN THE 1973 B.L.M. MANUAL OF INSTRUCTIONS. WE SET MONUMENTS AT POSITIONS ACCORDING TO THE EVIDENCE FOUND, AS SHOWN HEREON.

SEE CORNER RESTORATION RECORDS FILED IN THE OFFICE OF THE GRANT COUNTY SURVEYOR, DETAILING NEW MONUMENTS SET WITH NEW CORNER ACCESSORIES.

BASIS OF BEARINGS

RECORD MAP OF SURVEY NO. 1690
AS SHOWN

REGISTERED
PROFESSIONAL
LAND SURVEYOR

Jason L. Hatfield
OREGON
NOVEMBER 30, 2007
JASON L. HATFIELD
#69454

EXPIRES: 6/30/2009

LEGEND

- FOUND 1½\" GALV. IRON PIPE WITH ATTACHED GRANT COUNTY SURVEYOR BRASS CAP FROM SURVEY NO. 361
- ⊙ FOUND 2½\" ALUMINUM PIPE WITH ATTACHED ALUMINUM CAP FROM SURVEY NO. 1690
- FOUND 10\"X10\" CONCRETE POST AT 1/16TH CORNER
- ⊘ SET 5/8\"X30\" IRON PIN WITH ATTACHED 2\" ALUMINUM CAP MARKED \"BENCHMARK LAND SURVEYING\" AND WITH APPROPRIATE 1/16 CORNER DESIGNATIONS
- SET 5/8\"X30\" IRON PIN WITH ATTACHED YELLOW PLASTIC CAP MARKED \"BENCHMARK SURVEYING\"
- () G.L.O. RECORD BEARING AND DISTANCE
- [] RECORD BEARING AND DISTANCE FROM SURVEY NO. 1191
- [] RECORD BEARING AND DISTANCE FROM SURVEY NO. 1690
- X—X FENCE LINE

REFERENCES

RECORD MAP OF SURVEY NO.'S 286, 361, 404, 1191, 1211, 1603 & 1690

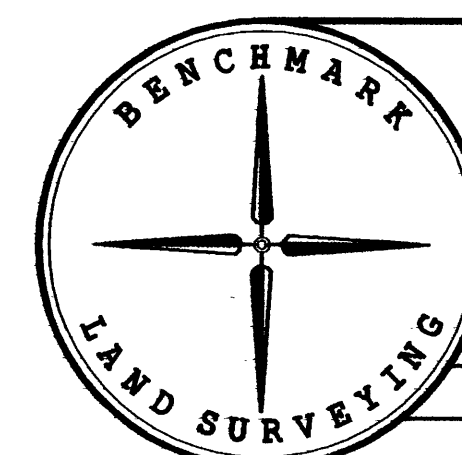
DEED RECORD INSTRUMENT NO.'S 971048 & 080339

DEED RECORD BOOK 76 PAGE 507
BOOK 90 PAGE 561

RECEIVED AND
FILED

April 16, 2009
OFFICE OF COUNTY SURVEYOR

ATTEST: *Jason L. Hatfield*



BENCHMARK LAND SURVEYING
217 N. CANYON BLVD. JOHN DAY, OREGON
2101 MAIN STREET, STE 223 BAKER CITY, OREGON
541-575-1251 ~ 800-699-0516

MAP OF SURVEY
SUBDIVISION OF THE NE1/4 AND THE SE1/4 OF SECTION 26,
T.13S., R.31E., W.M.,
GRANT COUNTY, OREGON

SURVEYED FOR	JESSE MADDEN
SURVEYED BY	JLH & MCS
Scale: 1\"=300'	Drawn by: JLH

RECORD MAP OF SURVEY NO. 1862