

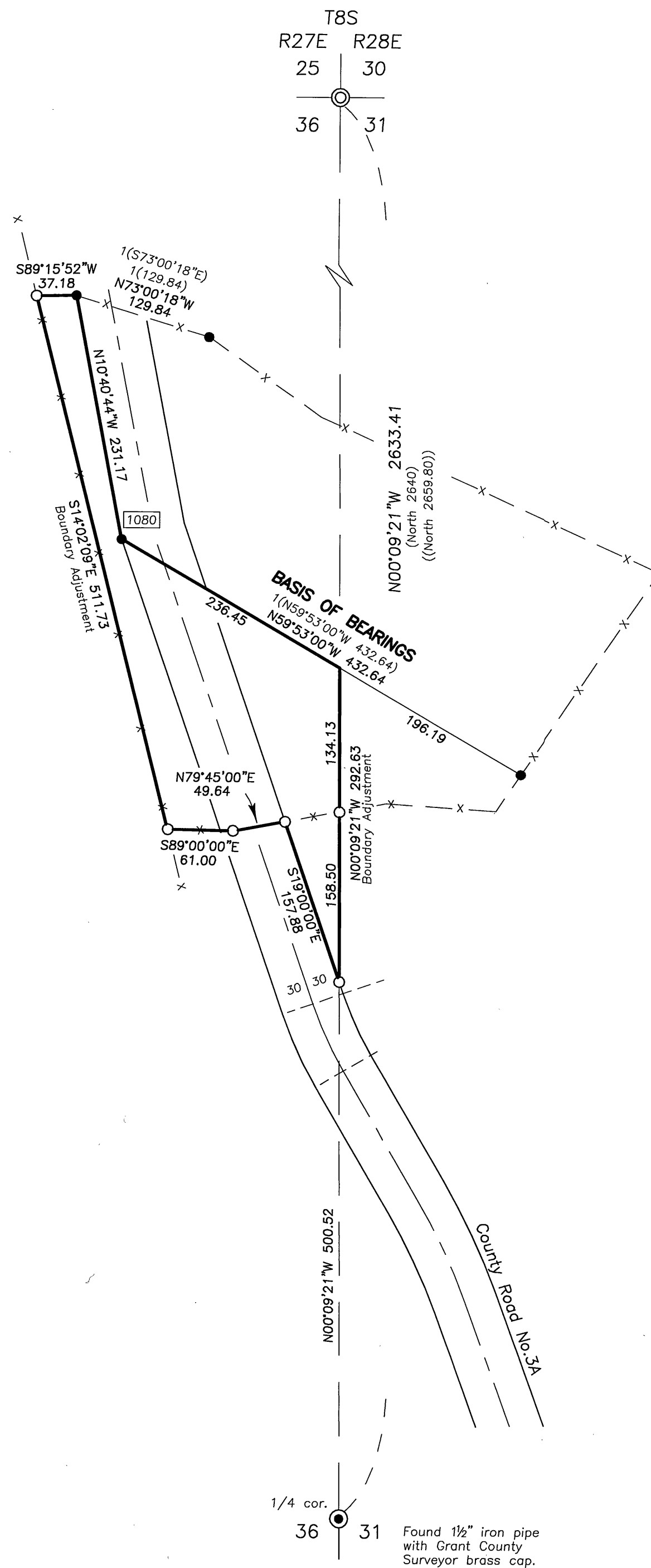
Scale 1"=1000'

RECEIVED AND
FILED

January 3, 2009

OFFICE OF COUNTY SURVEYOR

Attest:



1/4 cor.
36 31

Found 1 1/2" iron pipe with Grant County Surveyor brass cap.

Scale 1"=100'

BASIS OF BEARINGS
Survey No. 1663

LEGEND

- Found 1 1/2" iron pipe with Grant County Surveyor brass cap.
- Found 5/8" iron pin with attached yellow plastic cap, see Survey No. 1080.
- ⊙ Set 2 1/2" aluminum pipe with attached 3 1/2" alum. cap, see corner restoration sheet file separately.
- Set 5/8"x30" iron pin with attached red plastic cap marked CORNERSTONE SURVEYING, INC.
- X—X Fence Line
- () GLO record bearing and distance, Arron York, 1878.
- (()) GLO record bearing and distance, Henry Meldrum, 1881.
- 1() Survey No. 1080 record bearing and distance.
- 2() Survey No. 1663 record bearing and distance.
- Found monument, see record map of survey number shown in box.

NARRATIVE

This survey was performed at the request of Shannon Bravos, on behalf of the City of Monument. The purpose of this survey was to monument the boundaries shown for a proposed boundary adjustment between Jack Cavender and the City of Monument.

A search was made of the available records pertaining to this survey and for the appurtenant monuments shown hereon. The fence lines were located and monuments were set at the angle points for the proposed boundary.

I proportioned the position of the NW corner of Section 31 in 2003, see Survey No. 1663. In 2004 the county surveyor found original corner evidence at the NW corner of Section 30 and re-monumented the position. During this survey I tied the brass cap at the NW corner of Section 30 and at the W1/4 corner of Section 31. I used the broken boundary adjustment method to position the NW corner of Section 31 and set a new monument. See the corner restoration records for details of the monument set and the accessories taken.

REGISTERED
PROFESSIONAL
LAND SURVEYOR

OREGON
SEPT 19, 1995
JACK L. WATSON
2734

Renewal Date 6/30/2010



CORNERSTONE SURVEYING, Inc.
233 S. Canyon Blvd., John Day, Oregon 97845
(541) 575-1813

MAP OF SURVEY
PROPOSED BOUNDARY ADJUSTMENT
SITUATED IN THE NE1/4 OF SECTION 36
T8S, R27E, W.M.
GRANT COUNTY, OREGON

SURVEYED FOR: **City of Monument**

SURVEYED BY: Jack Watson

SURVEY COMPLETED: 1/14/2009

MAP OF SURVEY NO. 1857