

TOWER PARCEL AND EASEMENT LINE SURVEY

A TOWER PARCEL AND EASEMENT LINE SURVEY
LOCATED IN PARCEL 1 OF PARTITION PLAT 97-06,
RECORDS OF GRANT COUNTY, OREGON, LOCATED IN
THE SOUTHEAST ¼ OF SECTION 21, TOWNSHIP 13
SOUTH, RANGE 30 EAST, WILLAMETTE MERIDIAN.

SURVEY FOR

RANDY WINDLINX
SPECIALTY TOWER SERVICES, INC.
P.O. BOX 9491
BEND, OR 97708
(541) 383-1429

SURVEY BY

HANLEY ENGINEERING, INC.
THOMAS J. HANLEY, PLS 1817
P.O. BOX 701
BAKER CITY, OR 97814
(541) 523-3803

SURVEYED THROUGH AUGUST 15, 2008

LEGEND

- SET 5/8" X 30" IRON ROD WITH YELLOW PLASTIC CAP MARKED "HANLEY ENGR PLS 1817".
- FOUND 5/8" REBAR WITH RED PLASTIC CAP MARKED "CORNERSTONE SURVEYING, INC." AS PER PARTITION PLAT 97-06.
- × CALCULATED POSITION, NO MONUMENT SET.
- () RECORD DATA AS PER PARTITION PLAT 97-06.

NARRATIVE

WE WERE EMPLOYED BY RANDY WINDLINX TO COMPLETE THE REQUIREMENTS OF THIS EASEMENT BOUNDARY SURVEY. SEARCH IN THE FIELD LOCATED AND HELD EXISTING MONUMENTATION DESCRIBED IN PARTITION PLAT NO. 97-06. EASEMENT BOUNDARY AND MONUMENTS WERE SET TO CLIENT'S INSTRUCTIONS. SURVEY WAS PERFORMED USING A PENTAX III-10 TOTAL STATION.

SURVEYOR'S CERTIFICATE

I, THOMAS J. HANLEY, A REGISTERED PROFESSIONAL LAND SURVEYOR IN THE STATE OF OREGON, DO HEREBY CERTIFY THAT I HAVE CORRECTLY SURVEYED AND MARKED ON THE GROUND WITH PROPER MONUMENTATION IN ACCORDANCE WITH O.R.S. CHAPTER 92, AN ACCESS AND UTILITY EASEMENT LOCATED IN THE SOUTHEAST ¼ OF SECTION 21, TOWNSHIP 13 SOUTH, RANGE 30 EAST, WILLAMETTE MERIDIAN, MORE PARTICULARLY DESCRIBED AS FOLLOWS:

TOWER PARCEL

COMMENCING AT THE SOUTHEAST CORNER OF PARCEL 2 OF PARTITION PLAT NO. 97-06; THENCE NORTH 39°05'52" EAST A DISTANCE OF 1260.68 FEET TO THE POINT OF BEGINNING; THENCE NORTH 87°46'46" EAST A DISTANCE OF 50.00 FEET; THENCE NORTH 02°13'14" WEST A DISTANCE OF 50.00 FEET; THENCE SOUTH 87°46'46" WEST A DISTANCE OF 50.00 FEET; THENCE SOUTH 02°13'14" EAST A DISTANCE OF 50.00 FEET TO THE POINT OF BEGINNING.

ACCESS EASEMENT

AN ACCESS EASEMENT DESCRIBED AS FOLLOWS:

A 20.00 FEET WIDE ACCESS EASEMENT ALONG THE FOLLOWING CENTERLINE: COMMENCING AT THE SOUTHEAST CORNER OF PARCEL 2 OF PARTITION PLAT NO. 97-06; THENCE NORTH 39°05'52" EAST A DISTANCE OF 1260.68 FEET; THENCE NORTH 87°46'46" EAST A DISTANCE OF 50.00 FEET; THENCE NORTH 02°13'14" WEST A DISTANCE OF 50.00 FEET; THENCE SOUTH 87°46'46" WEST A DISTANCE OF 10.00 FEET TO THE POINT OF BEGINNING; THENCE NORTH 02°13'14" WEST A DISTANCE OF 23.37 FEET; THENCE NORTH 47°24'32" EAST A DISTANCE OF 34.62 FEET; THENCE NORTH 66°13'08" EAST A DISTANCE OF 48.85 FEET; THENCE NORTH 34°13'49" EAST A DISTANCE OF 70.98 FEET; THENCE NORTH 31°57'20" EAST A DISTANCE OF 70.39 FEET; THENCE NORTH 29°02'50" EAST A DISTANCE OF 69.32 FEET; THENCE NORTH 22°59'58" EAST A DISTANCE OF 62.98 FEET; THENCE NORTH 12°59'09" EAST A DISTANCE OF 51.32 FEET; THENCE NORTH 10°35'55" EAST A DISTANCE OF 154.33 FEET; THENCE NORTH 02°58'46" EAST A DISTANCE OF 30.42 FEET; THENCE NORTH 24°11'07" WEST A DISTANCE OF 23.72 FEET; THENCE NORTH 60°36'34" WEST A DISTANCE OF 29.96 FEET; THENCE SOUTH 85°50'36" WEST A DISTANCE OF 26.66 FEET; THENCE SOUTH 62°38'18" WEST A DISTANCE OF 62.78 FEET; THENCE SOUTH 58°56'18" WEST A DISTANCE OF 138.84 FEET; THENCE SOUTH 40°24'49" WEST A DISTANCE OF 323.75 FEET; THENCE SOUTH 35°31'34" WEST A DISTANCE OF 188.05 FEET; THENCE SOUTH 38°15'11" WEST A DISTANCE OF 173.08 FEET; THENCE SOUTH 36°49'04" WEST A DISTANCE OF 151.34 FEET; THENCE SOUTH 23°42'19" WEST A DISTANCE OF 55.32 FEET; THENCE SOUTH 28°59'31" WEST A DISTANCE OF 44.82 FEET; THENCE SOUTH 40°30'49" WEST A DISTANCE OF 90.83 FEET; THENCE SOUTH 32°28'15" WEST A DISTANCE OF 28.85 FEET; THENCE SOUTH 01°00'11" WEST A DISTANCE OF 55.35 FEET; THENCE SOUTH 28°12'25" EAST A DISTANCE OF 53.70 FEET; THENCE SOUTH 48°16'32" EAST A DISTANCE OF 25.74 FEET; THENCE SOUTH 64°52'37" EAST A DISTANCE OF 34.78 FEET; THENCE SOUTH 53°51'16" EAST A DISTANCE OF 42.40 FEET; THENCE SOUTH 08°34'07" EAST A DISTANCE OF 14.64 FEET; THENCE SOUTH 21°43'11" WEST A DISTANCE OF 20.31 FEET; THENCE SOUTH 40°30'42" WEST A DISTANCE OF 43.48 FEET; THENCE SOUTH 38°48'06" WEST A DISTANCE OF 19.60 FEET; THENCE SOUTH 07°11'15" WEST A DISTANCE OF 31.32 FEET; THENCE SOUTH 09°23'16" EAST A DISTANCE OF 23.08 FEET; THENCE SOUTH 23°52'32" WEST A DISTANCE OF 28.83 FEET; THENCE SOUTH 42°20'44" WEST A DISTANCE OF 33.24 FEET; THENCE SOUTH 72°48'58" WEST A DISTANCE OF 75.88 FEET; THENCE SOUTH 38°03'21" WEST A DISTANCE OF 23.49 FEET; THENCE SOUTH 15°08'56" EAST A DISTANCE OF 27.07 FEET; THENCE SOUTH 56°39'11" EAST A DISTANCE OF 40.00 FEET TO THE POINT OF TERMINUS.

UTILITY EASEMENT

A UTILITY EASEMENT DESCRIBED AS FOLLOWS:

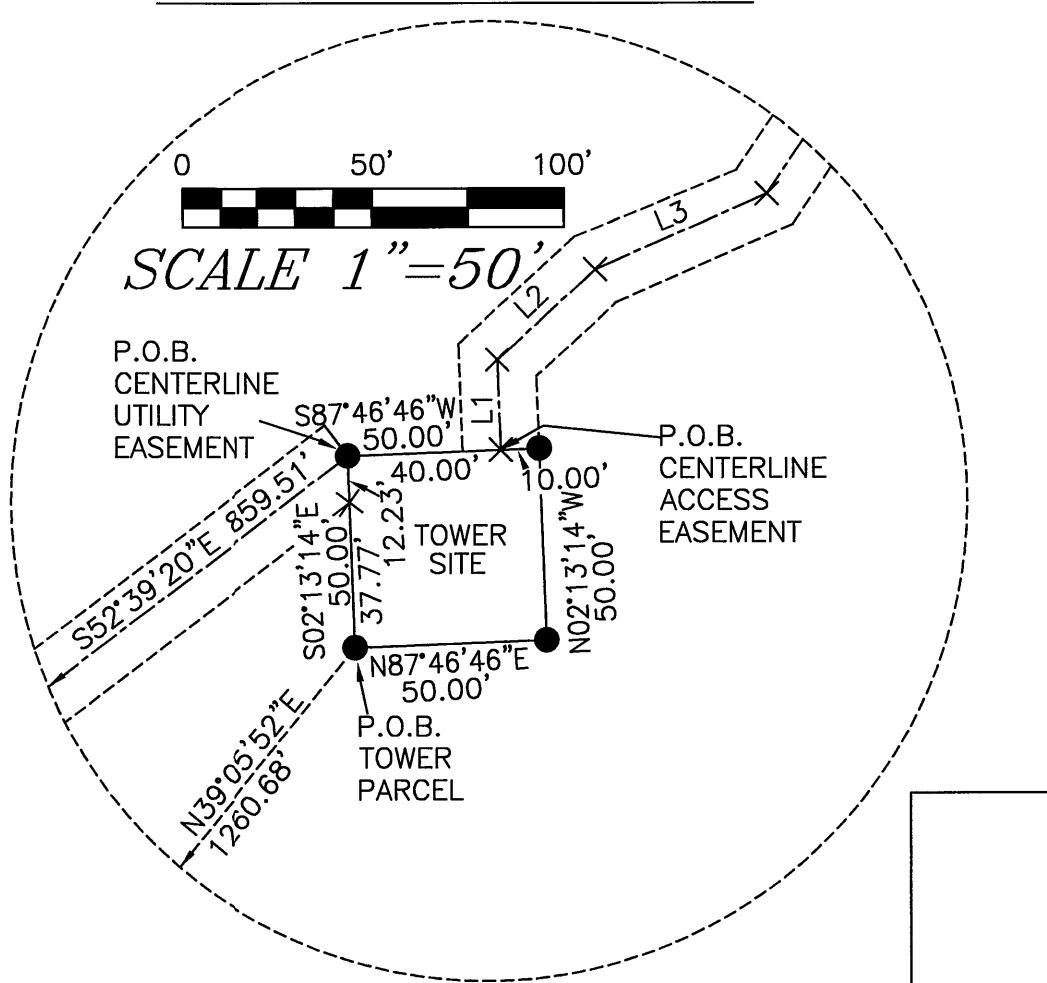
A 20.00 FEET WIDE UTILITY EASEMENT ALONG THE FOLLOWING CENTERLINE: COMMENCING AT THE SOUTHEAST CORNER OF PARCEL 2 OF PARTITION PLAT NO. 97-06; THENCE NORTH 39°05'52" EAST A DISTANCE OF 1260.68 FEET; THENCE NORTH 02°13'14" WEST A DISTANCE OF 50.00 FEET TO THE POINT OF BEGINNING; THENCE SOUTH 52°39'20" WEST A DISTANCE OF 859.51 FEET.

TOGETHER WITH A UTILITY EASEMENT DESCRIBED AS FOLLOWS:

A 20.00 FEET WIDE ACCESS AND UTILITY EASEMENT ALONG THE FOLLOWING CENTERLINE: COMMENCING AT THE SOUTHEAST CORNER OF PARCEL 2 OF PARTITION PLAT NO. 97-06; THENCE NORTH 39°05'52" EAST A DISTANCE OF 1260.68 FEET; THENCE NORTH 02°13'14" WEST A DISTANCE OF 50.00 FEET; THENCE SOUTH 52°39'20" WEST A DISTANCE OF 859.51 FEET; THENCE NORTH 13°45'49" WEST A DISTANCE OF 30.00 FEET TO THE POINT OF BEGINNING; THENCE SOUTH 13°45'49" EAST A DISTANCE OF 519.33 FEET TO THE POINT OF TERMINUS.

SUBJECT TO ANY EXISTING EASEMENTS OR RIGHT OF WAYS.

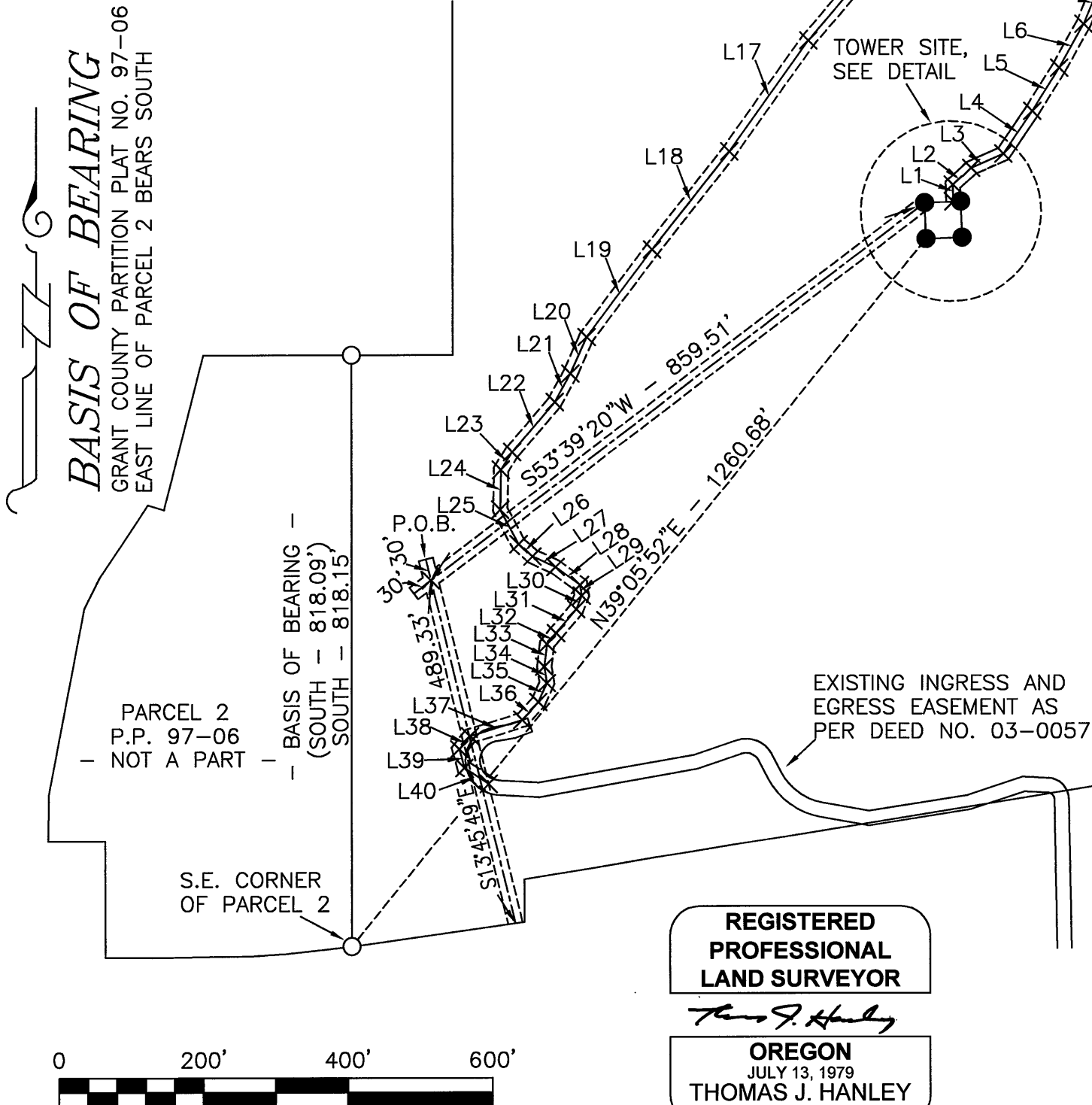
TOWER SITE DETAIL



ACCESS EASEMENT CENTERLINE DATA					
LINE	BEARING	DISTANCE	LINE	BEARING	DISTANCE
L1	N02°13'14"W	23.37'	L21	S28°59'31"W	44.82'
L2	N47°24'32"E	34.62'	L22	S40°30'49"W	90.83'
L3	N66°13'08"E	48.85'	L23	S32°28'15"W	28.85'
L4	N34°13'49"E	70.98'	L24	S01°00'11"W	55.35'
L5	N31°57'20"E	70.39'	L25	S28°12'25"E	53.70'
L6	N29°02'50"E	69.32'	L26	S48°16'32"E	25.74'
L7	N22°59'58"E	62.98'	L27	S64°52'37"E	34.78'
L8	N12°59'09"E	51.32'	L28	S53°51'16"E	42.40'
L9	N10°35'55"E	154.33'	L29	S08°34'07"E	14.64'
L10	N02°58'46"E	30.42'	L30	S21°43'11"W	20.31'
L11	N24°11'07"W	23.72'	L31	S40°30'42"W	43.48'
L12	N60°36'34"W	29.96'	L32	S38°48'06"W	19.60'
L13	S85°50'36"W	26.66'	L33	S07°11'15"W	31.32'
L14	S62°38'18"W	62.78'	L34	S09°23'16"E	23.08'
L15	S58°56'18"W	138.84'	L35	S23°52'32"W	28.83'
L16	S40°24'49"W	323.75'	L36	S42°20'44"W	33.24'
L17	S35°31'34"W	188.05'	L37	S72°48'58"W	75.88'
L18	S38°15'11"W	173.08'	L38	S38°03'21"W	23.49'
L19	S36°49'04"W	151.34'	L39	S15°08'56"E	27.07'
L20	S23°42'19"W	55.32'	L40	S56°39'11"E	40.00'

REFERENCES

GRANT COUNTY PARTITION PLAT NO. 97-06
DITCH EASEMENT, BOOK I, PAGE 788
UTILITY EASEMENT, BOOK 79 PAGE 69
WATER LINE EASEMENT, BOOK 107, PAGE 620
UTILITY EASEMENT, BOOK 107, PAGE 738
UTILITY EASEMENT, BOOK 107, PAGE 739
EASEMENT, BOOK 123, PAGE 838
EASEMENT, BOOK 123, PAGE 843
ACCESS EASEMENT NO. 03-0057
NOTE: ALL EASEMENTS ARE RECORDS OF GRANT CO.



REGISTERED
PROFESSIONAL
LAND SURVEYOR

THOMAS J. HANLEY
JULY 13, 1979
1817

RECEIVED AND
FILED

SEPT. 2, 2008
OFFICE OF COUNTY SURVEYOR
Attest: [Signature]

S21S22
S28S27

Renews June 30, 2009

SHEET 1 OF 1

MAP OF SURVEY NO. 1845