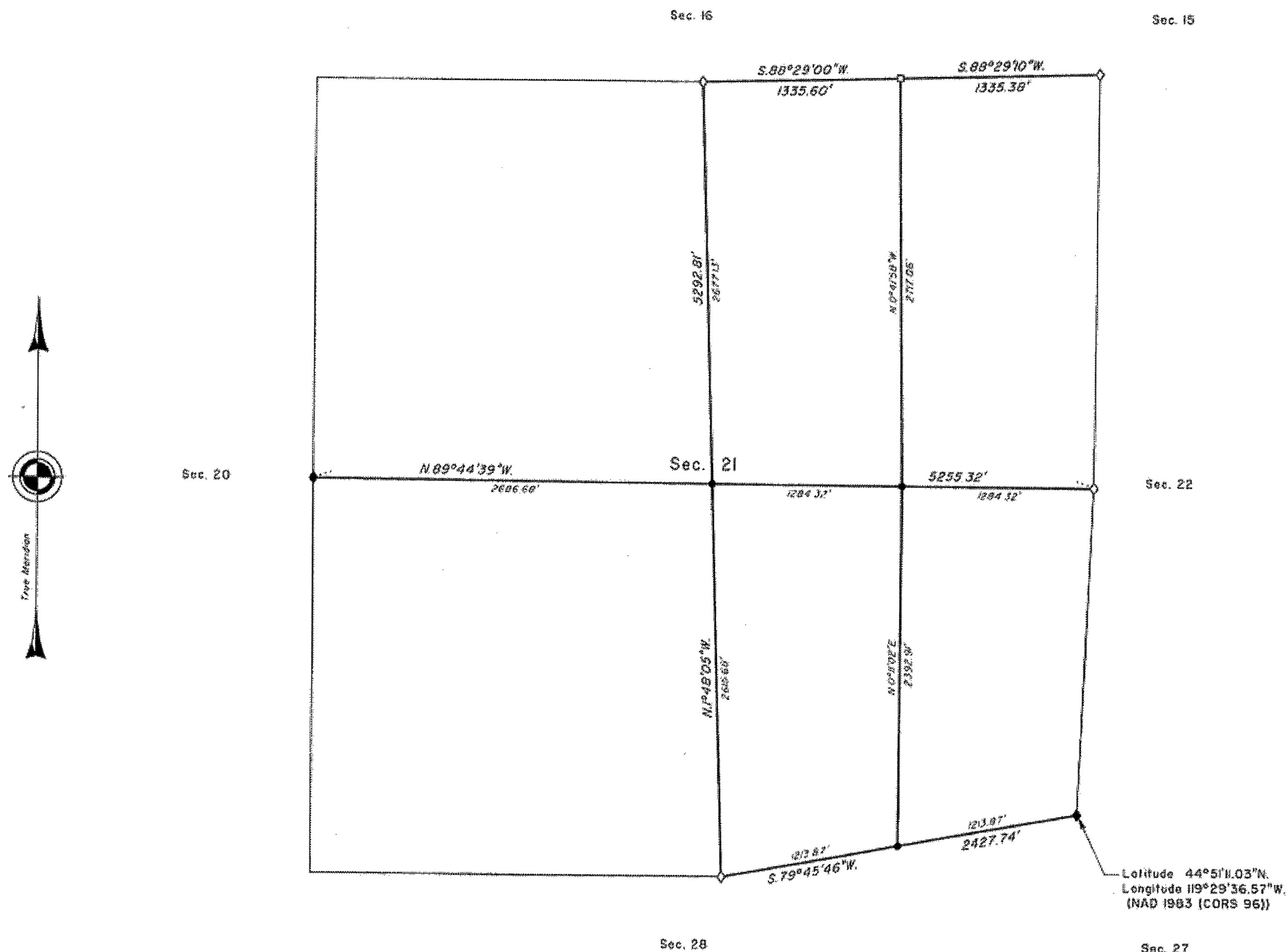


TOWNSHIP 8 SOUTH, RANGE 27 EAST, OF THE WILLAMETTE MERIDIAN, OREGON

DEPENDENT RESURVEY AND SUBDIVISION OF SECTION 21



A history of surveys is contained in the field notes.

This plat represents a dependent resurvey of a portion of the subdivisional lines, T. 8 S., R. 27 E., Willamette Meridian, Oregon, designed to restore the corners in their true original locations according to the best available evidence, and the subdivision of section 21.

Measured distances and directions have been adjusted by computer software that incorporates a least squares adjustment routine. The adjusted bearings and distances are reported to the nearest second and 0.01 foot.

The lottings and areas are as shown on the plat approved September 4, 1879.

The survey was executed by Kenneth W. Saveland, Cadastral Surveyor, beginning August 7, 2006, and completed May 8, 2007, pursuant to Special Instructions dated July 19, 2006, and Supplemental Special Instructions dated March 30, 2007, under Group Number 2148, Oregon.

LEGEND

- ◊ Original corner previously remonumented
- ◆ Original corner remonumented this survey
- Corner previously established or reestablished
- Corner established or reestablished this survey

UNITED STATES DEPARTMENT OF THE INTERIOR
BUREAU OF LAND MANAGEMENT

Portland, Oregon

September 28, 2007

This plat is strictly conformable to the approved field notes, and the survey, having been correctly executed in accordance with the requirements of law and the regulations of this Bureau, is hereby accepted.

For the Director

Mary J. M. Hantel

Chief Cadastral Surveyor of Oregon

RECEIVED AND
FILED

DEC. 4, 2007
OFFICE OF COUNTY SURVEYOR
Attest: *[Signature]*