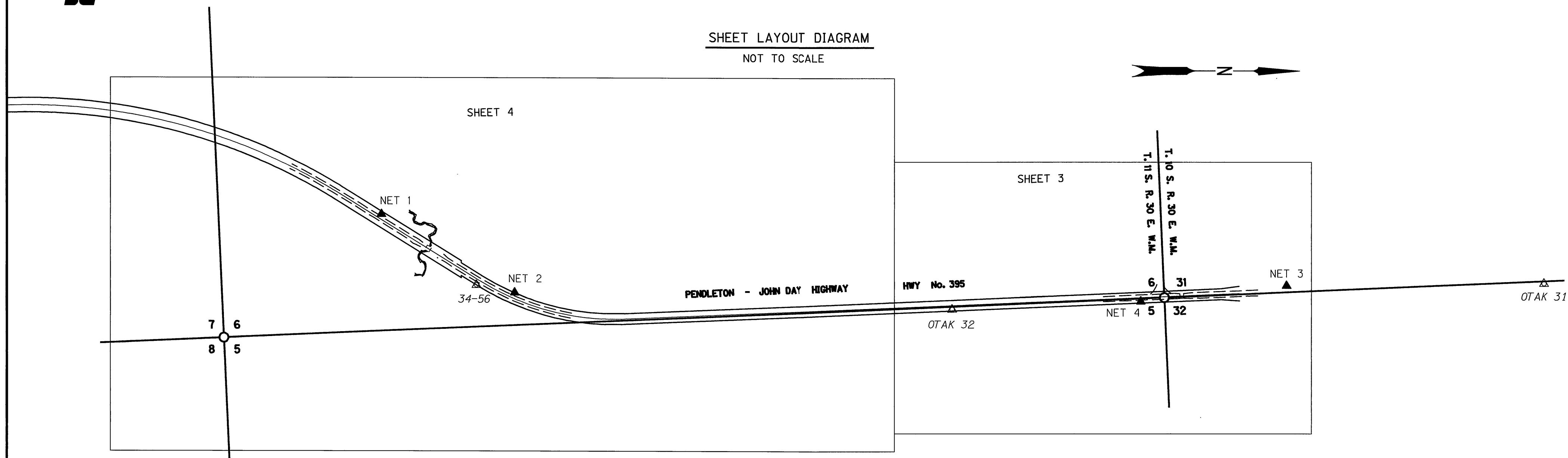




S.E.  $\frac{1}{4}$  SEC. 31, S.W.  $\frac{1}{4}$  SEC. 32, T.10S. R.30E. W.M.  
E. $\frac{1}{2}$ SEC. 6, W. $\frac{1}{2}$ SEC. 5, N.E.  $\frac{1}{4}$  SEC. 7 T.11S. R.30E. W.M.

**SHEET LAYOUT DIAGRAM**  
NOT TO SCALE



**SURVEYOR'S NARRATIVE**

THE PURPOSE OF THIS SURVEY IS TO RESOLVE THE LOCATION OF THE EXISTING CENTER LINE AND RIGHT-OF-WAY OVER A PORTION OF THE PENDLETON - JOHN DAY HIGHWAY (OREGON HIGHWAY 395) FROM STATION 373+00 TO 435+00. THIS SURVEY ESTABLISHES A HORIZONTAL AND VERTICAL CONTROL NETWORK IN PREPARATION FOR THE REPLACEMENT OF BRIDGE 06204, OVER SMITH CREEK, IN THE COMMUNITY OF FOX, GRANT COUNTY, OREGON AND BRIDGE 06205, OVER FOX CREEK, 0.75 MILES SOUTH OF THE COMMUNITY OF FOX.

THIS SURVEY UTILIZES THE LOCAL DATUM PLANE (LDP) FROM THE OTAK MONUMENTATION SURVEY, RECORDED AS SURVEY NO. 1221, GRANT COUNTY SURVEY RECORDS. THE LDP IS RELATIVE TO THE OREGON COORDINATE SYSTEM (OCS), NORTH ZONE, NAD 27. THE LDP COORDINATES DEFINE TRUE GROUND DISTANCES. TO RETURN THE COORDINATES TO GRID, MULTIPLY BOTH THE NORTH AND EAST COORDINATE BY 0.99971199.

THE HIGHWAY CENTER LINE IN THE VICINITY OF BRIDGE 6204 WAS RESOLVED BY LOCATING MONUMENTATION FROM THE ABOVE CITED SURVEY AND USING THOSE MONUMENTS TO CONTROL THE CENTER LINE LOCATION AS SHOWN ON THE OREGON DEPARTMENT OF TRANSPORTATION, (ODOT), RIGHT-OF-WAY MAP 10B-1-2. THE MONUMENTS AS LOCATED WERE FOUND TO BE IN AGREEMENT WITH THE OTAK MAP AND THE PHYSICAL LOCATION OF THE HIGHWAY AGREES WITH THE GEOMETRY DESCRIBED ON 10B-1-2.

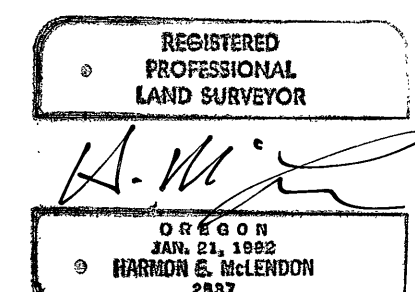
THE CENTER LINE OF THE HIGHWAY IN THE VICINITY OF BRIDGE 06205, (FOX CREEK), WAS NOT AS CLEARLY DEFINED. MAP 10B-1-2 TERMINATES AT THE TOWNSHIP LINE BETWEEN TOWNSHIP 10 AND 11 SOUTH. THE HIGHWAY STATIONING RUNS, IN TYPICAL ODOT FASHION, FROM NORTH TO SOUTH, ENDING AT ENGINEER'S STATION 377+18.50 P.O.T. THE HIGHWAY CENTER LINE RUNNING SOUTH FROM THAT POINT IS DESCRIBED ON ODOT RIGHT-OF-WAY MAP 5B-31-4 AND ITS STATIONING RUNS FROM SOUTH TO NORTH AND IS EXPRESSED IN DIFFERENT STATION VALUES WITH NO EQUIVALENT VALUES, (STATION EQUATIONS) EXPRESSED ON EITHER MAP. AFTER CONSULTATION WITH THE CLIENT, (OREGON BRIDGE DEVELOPMENT PARTNERSHIP), IT WAS DECIDED TO CONTINUE THE STATIONING FROM MAP 10B-2-1 SOUTH FROM THE TOWNSHIP LINE THROUGH THE LIMITS OF THE PROJECT. THE GEOMETRY OF THE CENTER LINE WAS CALCULATED FROM MAP 5B-31-4 AND ROTATED TO FIT THE PROJECT BEARING BASE, (CS #1221), AND THE PHYSICAL LOCATION OF THE HIGHWAY CENTER LINE AND THE EXISTING RIGHT-OF-WAY FENCES. RIGHT-OF-WAY WIDTHS WERE DETERMINED FROM ODOT RIGHT-OF-WAY FILES AND WERE FOUND TO BE IN AGREEMENT WITH EXISTING FENCES.

BEARINGS USED ON THIS SURVEY ARE BASED UPON THE OREGON STATE PLANE COORDINATE SYSTEM, NORTH ZONE, NAD27 AS DEFINED BY MONUMENTATION RECOVERED FROM GRANT COUNTY SURVEY #1221.

THE VERTICAL COMPONENT OF THE NETWORK WAS ESTABLISHED BY DIFFERENTIAL LEVELING FROM THE NATIONAL GEODETIC SURVEY BENCHMARK "34-56", (PID#QC0233), ELEVATION = 4380.99 (NAVD88).

THE SURVEY WORK WAS PERFORMED IN OCTOBER OF 2006 AND FEBRUARY OF 2007. THE CONTROL NETWORK WAS SET, AND A LEAST SQUARES ADJUSTMENT WAS PERFORMED. THE EQUIPMENT USED WERE TOPCON DUAL FREQUENCY GPS RECEIVERS, A TRIMBLE 5603DR200+ TOTAL STATION, AND A TRIMBLE DINI 12 DIGITAL LEVEL.

LEGEND	
▲	NETWORK POINT
△	FOUND MONUMENT USED AS NETWORK POINT



Reviews 12/31/08

**RECEIVED AND  
FILED**

*Aug 30, 2007*  
OFFICE OF COUNTY SURVEYOR  
Attest: *[Signature]*

**ANDERSON-PERRY & ASSOCIATES**  
1901 N. FIR ST., LA GRANDE, OR. 97850

HORIZONTAL CONTROL, RECOVERY AND RETRACEMENT SURVEY  
BRIDGE 06204, SMITH CREEK AND BRIDGE 06205, FOX CREEK  
HIGHWAY 395, (OR 28), MP 98.31 AND MP 99.13,  
GRANT COUNTY

FOR O.B.D.P. & O.D.O.T. REGION 5  
1165 UNION ST. NE STE 200  
SALEM, OR., 97301

AUGUST, 2007  
SCALE: AS SHOWN  
SHEET 1 OF 4

*MAP OF SURVEY NO. 1819*