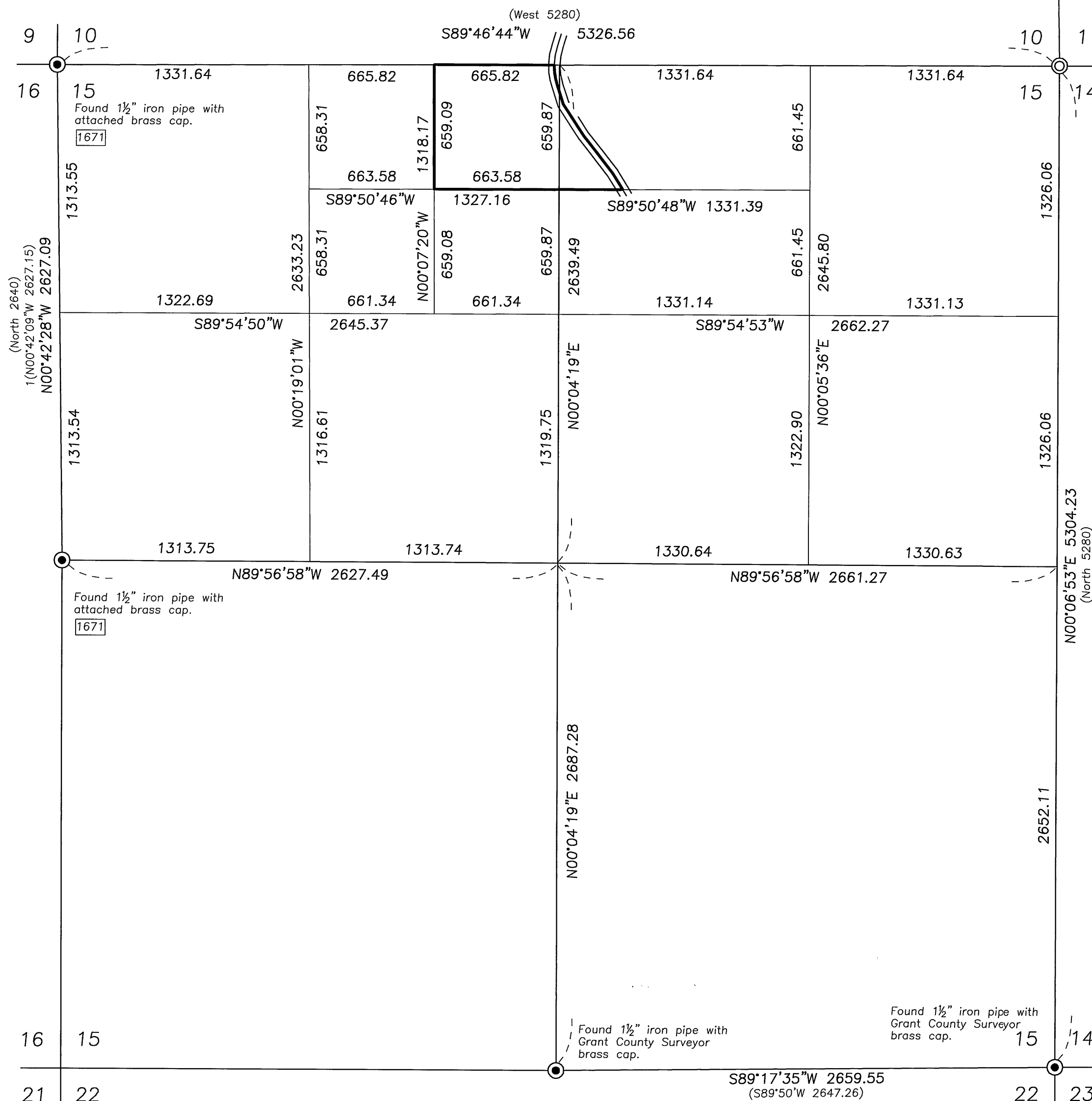


T13S, R31E, W.M.

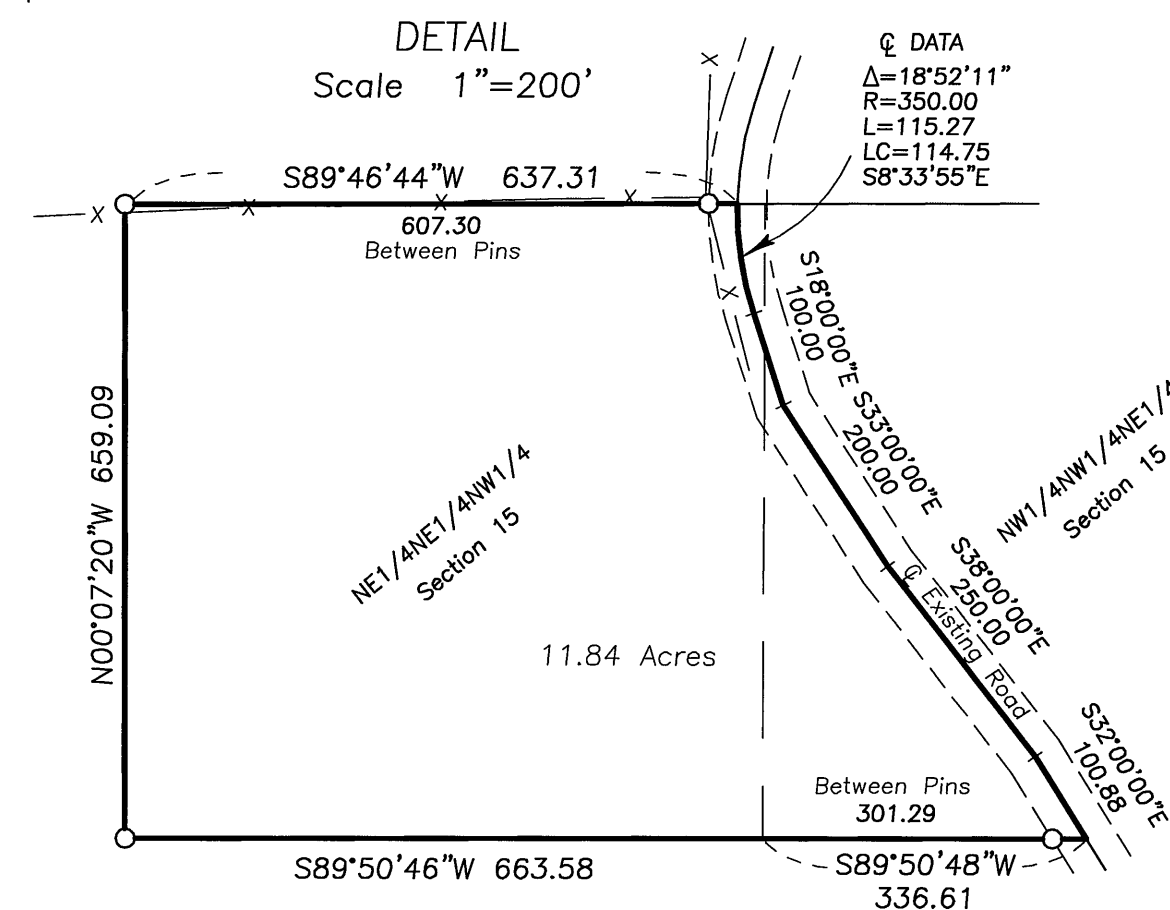
Scale 1"=500'



LEGEND

- Found iron pipe with attached brass cap as shown.
- Set 5/8"x30" iron pin with attached red plastic cap marked CORNERSTONE SURVEYING, INC.
- ⊙ Set 2 1/2" aluminum pipe with attached 3/4" aluminum cap, see corner restoration sheets for details.
- x—x Fence Line
- () GLO record bearing and distance.
- 1() Survey No. 1671 record bearing and distance.
- Found monument, see record map of survey number shown in box.

DETAIL
Scale 1"=200'



NARRATIVE

This survey was performed at the request of Dave Barntish. The purpose of this survey was to survey and monument the boundaries of Parcel 1 of Land Partition Plat No. 2005-12.

This survey was performed using static GPS receivers and Electronic Total Station. The GPS survey was made in NAD 83 state plane coordinates, Oregon north zone. The state plane bearings were rotated clockwise 01°05'16" to true north near the S1/4 corner of Section 15, T13S, R31E. All bearings are relative to this local north meridian.

A search was made of the available records pertaining to this survey. Field measurements were made to locate the existing monuments shown, the fence lines and the center line of the existing road which is shown. I searched for the original corner stone monuments at the N1/4 corner, W1/4 corner and at the NE corner of Section 15. I also searched for the original corner stones at the S1/4 corner, E1/4 corner, and at the SE and NW corners of Section 11. I did not find the original corner stones at these locations. I found old fence corners at the NW and SE corners of Section 11. The fences running north-south are still up and being used. The fences running east-west at both corner locations are no longer up, although I found very old rock jacks that were used when the fences were up. I accept the fence corners as the best available evidence of these corner locations. The corner positions of the N1/4 corner, E1/4 corner and the NE corner of Section 15 are proportioned. Section 15 was subdivided in the usual manner to establish the north, west and south boundaries of the NE1/4NE1/4NW1/4 and the NW1/4NW1/4NE1/4 of Section 15. The center of the existing road was located for the eastern boundary of Parcel 1 of Partition No. 2005-12. See the corner restoration sheets filed in the office of the Grant County Surveyor for the corners of section 11 established in this survey.

CORNERSTONE SURVEYING, Inc.
233 S. Canyon Blvd., John Day, Oregon 97845
(541) 575-1813

RECEIVED AND
FILED

JUNE 22, 2007
OFFICE OF COUNTY SURVEYOR
Attest: *[Signature]*

REGISTERED
PROFESSIONAL
LAND SURVEYOR
[Signature]
OREGON
SEPT 19, 1995
JACK L. WATSON
2734
Renewal Date 6/30/2008

MAP OF SURVEY
OF PARCEL 1 OF LAND PARTITION NO. 2005-12
SITUATED IN THE NE1/4 AND IN THE NW1/4
OF SECTION 15, T13S, R31E, W.M.
GRANT COUNTY, OREGON
SURVEYED FOR: Dave Barntish
SURVEYED BY: Jack Watson Date: 6/13/2007
DRAWN BY: Jack Watson

MAP OF SURVEY NO. 1811