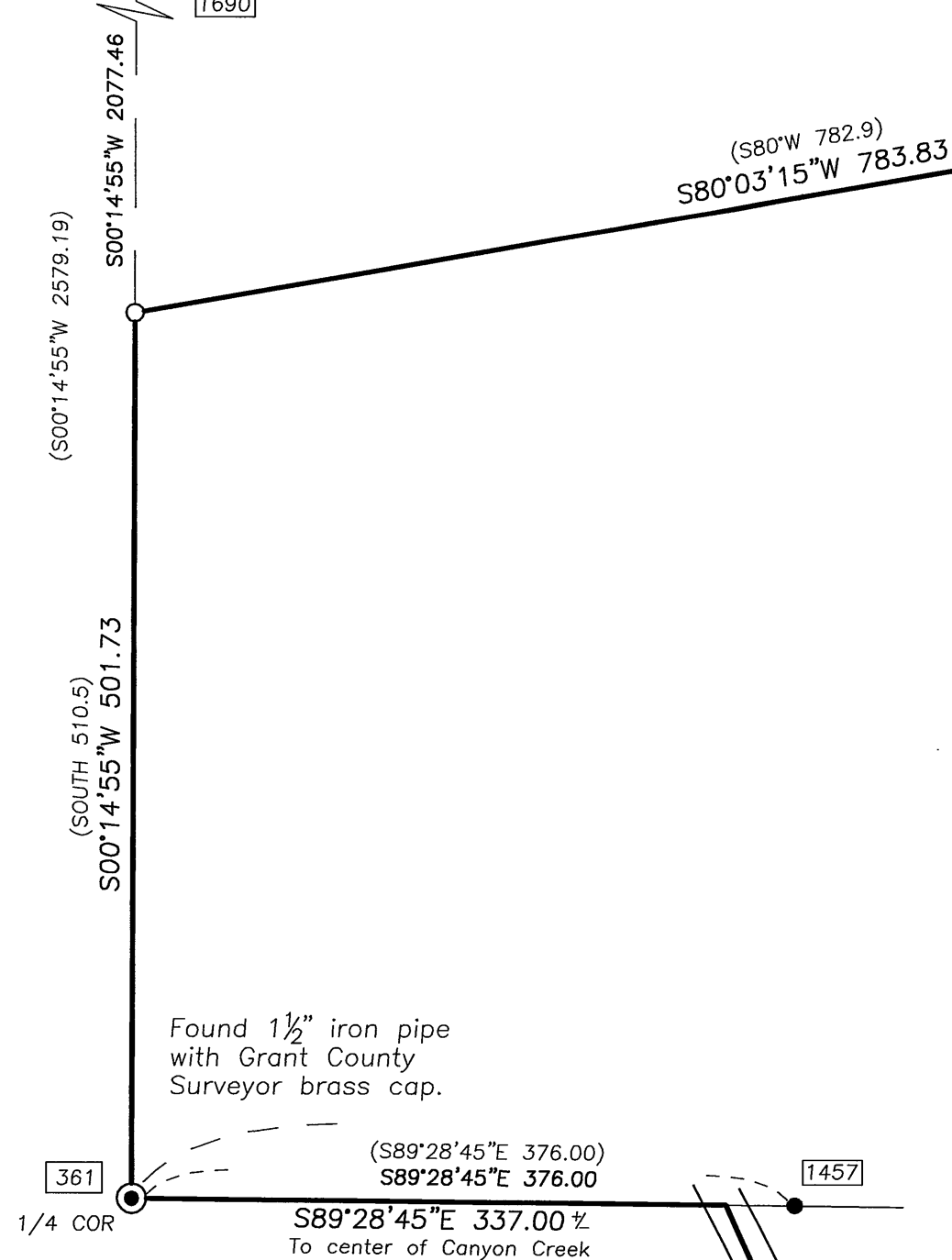


C1/4 COR
SECTION 26
Found 2 1/2" alum. pipe
with alum. cap
1690



20.27 Acres

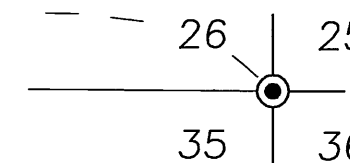
BASIS OF BEARINGS

(S89°50'W 2643.3) GLO
(S89°28'45"E 2709.90)
S89°28'45"E 2709.90

ROW DATA
Δ=1'01.12"
R=3467.91
L=667.00
LC=665.97
N14°11'54"W
(L=667.0)

Record & Data
Δ=3854'00"
R=3507.91
L=2381.7

T13S R31E



Found 2 1/2" alum. pipe
with alum. cap
1690

ROW DATA
Δ=7'05.47"
R=3467.91
L=429.52
LC=429.24
N5°08'24"W

Found 3" brass disk set in
concrete cylinder.
USBPR Mon. No. 17

SOUTH
115.00
S03°00'00"E
125.00
S10°00'00"E
90.00
S23°00'00"E
112.11

S23°00'00"E
112.11
Pin is offset
N89°56'31"W, 30.7%
Between Pins
442.31
S89°56'31"E 475.01
(West)

SE corner of lot 3
Highway Addition
Pin is offset
N89°56'31"W, 2.00

N01°35'31"W 279.27
N01°35'31"W 1425.06
(S01°39'E 1426.4)
Highway Drawing No. 8B-3-31

Found concrete cylinder
the brass cap is missing.
USBPR Mon. No. 15

RECEIVED AND
FILED

Nov. 3, 2006
OFFICE OF COUNTY SURVEYOR
JACK L. WATSON

REGISTERED
PROFESSIONAL
LAND SURVEYOR

JACK L. WATSON
2734
SEP 19, 1995
OREGON

Renewal Date 6/30/2008

CORNERSTONE SURVEYING, Inc.

233 S. Canyon Blvd., John Day, Oregon 97845
(541) 575-1813

MAP OF SURVEY SITUATED IN THE SE1/4 OF SECTION 26 AND IN THE NE1/4 OF SECTION 35, T13S, R31E, W.M. A PORTION IS IN THE CITY OF CANYON CITY GRANT COUNTY, OREGON	
SURVEYED FOR: SCHOOL DISTRICT NO. 3	
SURVEYED BY : Jack Watson	Date: 10/26/2006
DRAWN BY : Jack Watson	

MAP OF SURVEY NO. 1782