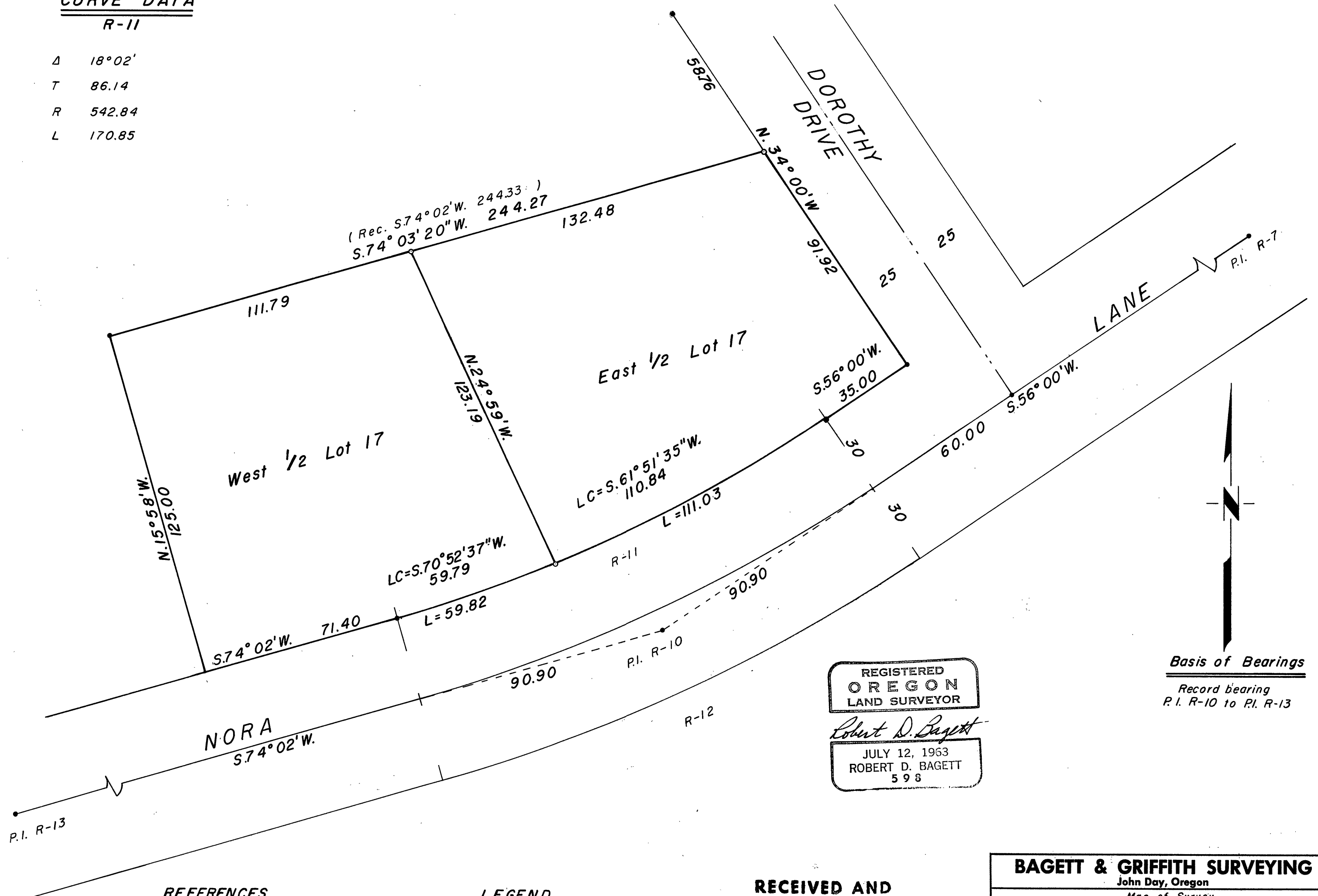


CURVE DATA
R-11

Δ 18°02'
T 86.14
R 542.84
L 170.85



Basis of Bearings
Record bearing
P.I. R-10 to P.I. R-13

REGISTERED
OREGON
LAND SURVEYOR
Robert D. Baggett
JULY 12, 1963
ROBERT D. BAGETT
598

REFERENCES
HALL ACRES SUBDIVISION PLAT

LEGEND
• Fd. monument of record.
○ Set 1/2" x 24" iron pin.

RECEIVED AND
FILED
MAY 14 1970
JOHN LIVEIRA, County Clerk
By _____ Deputy

BAGETT & GRIFFITH SURVEYING		
John Day, Oregon		
Map of Survey		
East 1/2 of Lot 17 BLK.2		
HALL ACRES SUBDIVISION		
Grant County, Oregon		
SURVEYED FOR	Joe West	
SURVEYED BY	R.D.B.	Apr. 7, 1970
Scale: 1" = 30'	Drawn by: R.D.B.	Apr. 9, 1970