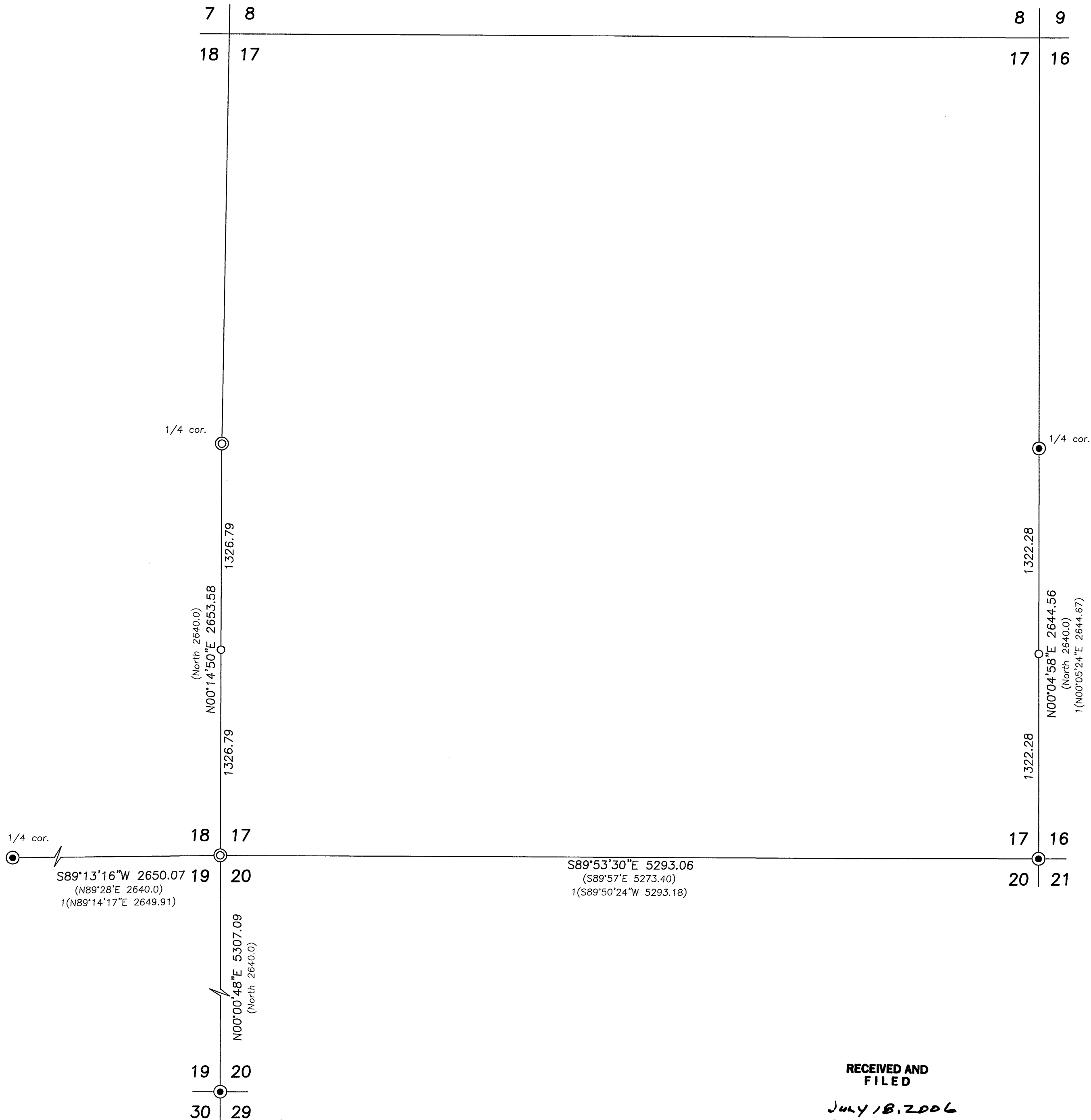


T11S R30E



Scale 1"=500'

LEGEND

- Found 2½" aluminum pipe with attached 3" aluminum cap, see Survey No. 955.
- Set 5/8"x30" iron pin with attached 2" aluminum cap marked CORNERSTONE SURVEYING, INC. and the corner designation.
- ⊙ Set 2½"x30" aluminum pipe with attached 3½" aluminum cap marked CORNERSTONE SURVEYING, INC. and the corner designation, see Corner Restoration records for details.
- () GLO record bearing and distance.
- 1() Survey No. 955 record bearing and distance.

NARRATIVE

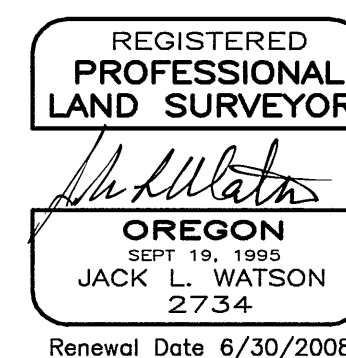
This survey was performed at the request of Philip Wirth, on behalf of Five Springs Ranch, LLC. The purpose of this survey was to establish the S1/16 corners on the east and west lines of Section 17.

This survey was performed using static GPS receivers and Electronic Total Station. The bearings for this survey are based on the GPS survey. The GPS survey was made in NAD 83 state plane coordinates, Oregon north zone. The state plane bearings were rotated clockwise 00°57'32" to true north near the NE corner of the NW1/4NE1/4 Section 18, T11S, R30E. All bearings are relative to this local north meridian.

A search was made of the available records pertaining to this survey. Field measurements were made to locate the monuments shown. I searched for the original corner monument at the W1/4 corner of Section 17 and found the marked corner stone. I accepted the marked stone and re-monumented the corner position with an aluminum pipe monument, see the corner restoration sheet for details. I also searched for the original corner monument at the S1/4 corner and the SW corner of Section 17 and at the W1/4 corner of Section 20. These monuments were not found. I positioned the SW corner of Section 17 at double proportion. The 1/16th corners were set in accordance with the BLM manual of surveying instructions.

RECEIVED AND
FILED

JULY 18, 2006
OFFICE OF COUNTY SURVEYOR
Attest: *[Signature]*



CORNERSTONE SURVEYING, Inc.
233 S. Canyon Blvd., John Day, Oregon 97845
(541) 575-1813

MAP OF SURVEY SECTION 17 T11S, R30E, W.M.	
GRANT COUNTY, OREGON	
SURVEYED FOR: Five Springs Ranch, LLC	
SURVEYED BY : Jack Watson	Date: 6/21/2006
DRAWN BY : Jack Watson	

MAP OF SURVEY NO. 1767