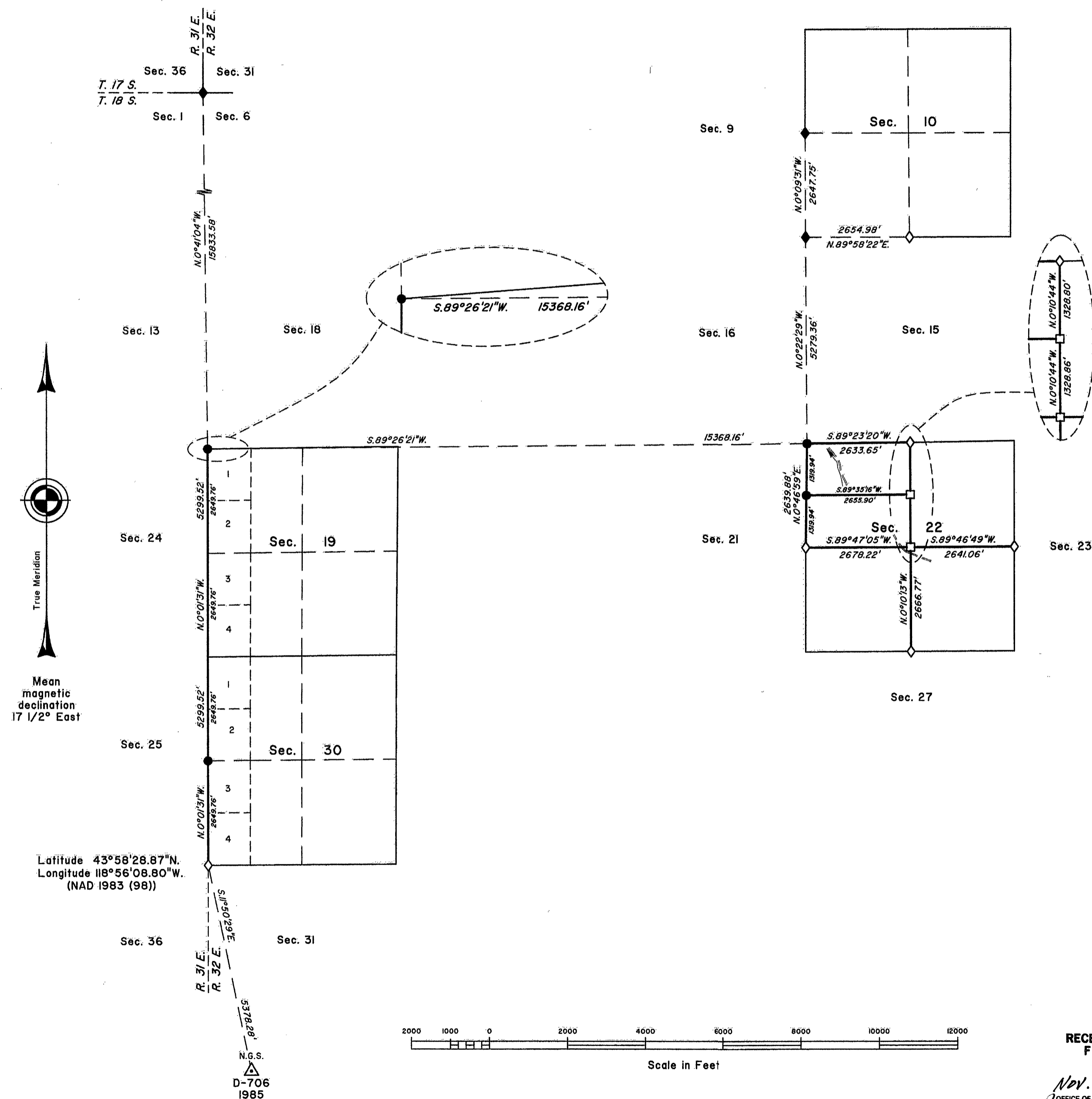


TOWNSHIP 18 SOUTH, RANGE 32 EAST, OF THE WILLAMETTE MERIDIAN, OREGON

DEPENDENT RESURVEY AND SUBDIVISION OF SECTION 22



A history of surveys is contained in the field notes.

This plat represents a dependent resurvey of a portion of the west boundary and subdivisional lines, T. 18 S., R. 32 E., Willamette Meridian, Oregon, designed to restore the corners in their true original locations according to the best available evidence, and the subdivision of section 22.

Measured distances and directions have been adjusted by Cadastral Measurement Management (CMM), computer software that incorporates a least squares adjustment routine. The adjusted bearings and distances are reported to the nearest second and 0.01 foot.

The lottings and areas are as shown on the plat approved November 28, 1883.

The survey was executed by Bryan S. Seibold, Cadastral Surveyor, beginning June 19, 2001, and completed July 24, 2001, pursuant to Special Instructions dated April 16, 2001, under Group Number 1982, Oregon.

Timber in this area consists of pine, juniper, and mountain mahogany.

The tie to the geodetic control station is reported as mean bearing and sea level distance.

UNITED STATES DEPARTMENT OF THE INTERIOR
BUREAU OF LAND MANAGEMENT

Portland, Oregon October 17, 2003

This plat is strictly conformable to the approved field notes, and the survey, having been correctly executed in accordance with the requirements of law and the regulations of this Bureau, is hereby accepted.

For the Director

Mary J. M. Hartzel

Chief Cadastral Surveyor of Oregon

RECEIVED AND
FILED

NOV. 24, 2004
OFFICE OF COUNTY SURVEYOR
Altest: [Signature]