

**MAP OF SURVEY TO LOCATE THE
N-S CENTER OF SECTION LINE,
SECTION 32, T.12S., R.31E., W.M.
GRANT COUNTY, OREGON
COMPLETED APRIL 1, 2004**

NARRATIVE

THIS SURVEY WAS PERFORMED AT THE REQUEST OF RON SMITH IN ORDER TO LOCATE THE NORTH-SOUTH CENTER OF SECTION LINE OF SECTION 32, T.12S., R.31E., W.M. FOR FENCING.

SECTION 32 WAS ORIGINALLY SURVEYED BY JOHN B. DAVID UNDER G.L.D. CONTRACT NO. 131 DATED JUNE 8, 1869.

THE SE CORNER IS FOUND TO BE MONUMENTED BY DOUGLAS M. FERGUSON FROM ORIGINAL EVIDENCE AS SHOWN ON GRANT COUNTY MAP OF SURVEY 785, FILED AUGUST 29, 1983. THE SW CORNER WAS ALSO MONUMENTED BY MR. FERGUSON, AT PROPORTIONATE MEASURE, AS SHOWN ON SAID MAP OF SURVEY 785.

THE NE AND NW CORNERS ARE FOUND TO BE MONUMENTED BY DUANE GRIFFITH FROM ORIGINAL EVIDENCE AS SHOWN ON GRANT COUNTY MAP OF SURVEY NO. 859, FILED FEBRUARY 11, 1985. NO MEASUREMENT IS SHOWN BETWEEN THESE MONUMENTS ON SAID MAP NO. 859.

THE ORIGINAL EVIDENCE AT THE N1/4 CORNER IS NOT RECOVERED THIS SURVEY AND IS MONUMENTED AT PROPORTIONATE MEASURE FROM THE ABOVE SAID MONUMENTS AT THE NE & NW CORNERS.

THE ORIGINAL EVIDENCE AT THE S1/4 CORNER IS NOT RECOVERED AND IS MONUMENTED BASED ON THE CALCULATED POSITION SHOWN ON THE ABOVE SAID MAP OF SURVEY 785.

THE MONUMENTS SHOWN BELOW IN DETAILS 1 & 2, AS SET BY JACK WATSON ON GRANT COUNTY MAP OF SURVEY NO. 1601, FILED JULY 18, 2001, ARE NOT ACCEPTED ON THIS SURVEY. REFER TO GRANT COUNTY MAP OF SURVEY 1609, FILED SEPTEMBER 6, 2001, REBUTTING MAPS OF SURVEY 1601 AND 1607. FOR CLARITY, THE RECORD MEASUREMENTS FROM SAID MAP NO. 1601 ALONG THE SOUTH AND WEST LINES OF SECTION 32 ARE NOT SHOWN ON THIS SURVEY.

LEGEND

- MONUMENT OF RECORD, SEE NOTE NEAR SYMBOL
- SET 2-1/2" DIA. X30" ALUMINUM PIPE WITH 3" DIA. ALUMINUM CAP. SEE 'CERTIFIED RECORD OF LAND CORNER MONUMENTATION' FILED WITH THIS SURVEY.
- ☒ CALCULATED POSITION, NOT MONUMENTED

(NO.) GRANT COUNTY MAP OF SURVEY NUMBER

(BEARING/DIST) BEARING/DISTANCE RETURNED BY JOHN B. DAVID UNDER G.L.D. CONTRACT NO. 131.

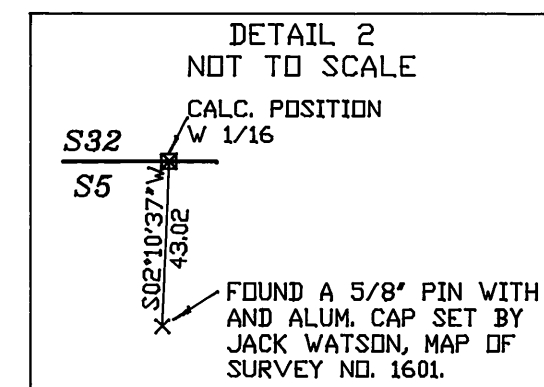
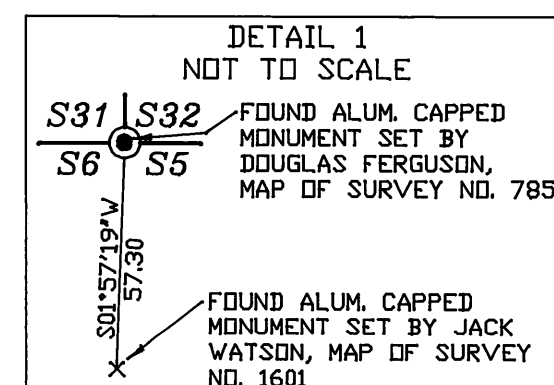
(BEARING/DIST) BEARING/DISTANCE AS SHOWN ON GRANT COUNTY MAP OF SURVEY NUMBER 785

BEARING/DIST BEARING/DISTANCE AS SHOWN ON GRANT COUNTY MAP OF SURVEY NUMBER 1601

—— SECTION LINES
—— SECTION CENTERLINE

REGISTERED
PROFESSIONAL
LAND SURVEYOR

OREGON
JULY 18, 1999
KENNETH H. DELANO JR.
49865
RENEWAL DATE:
01/01/2008

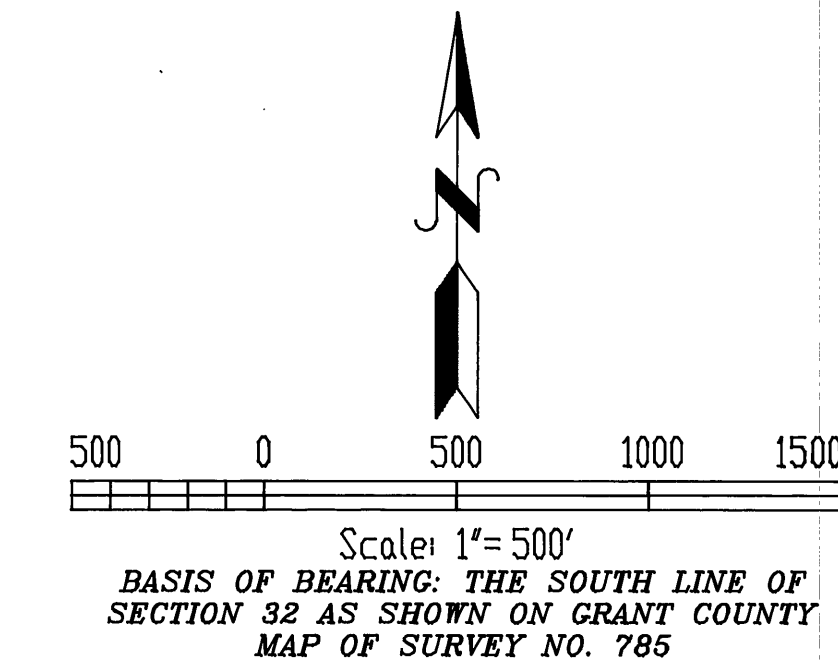


RECEIVED AND
FILED

MAY 17, 2004
OFFICE OF COUNTY SURVEYOR
Attest: *[Signature]*

SEE DETAIL 1 ABOVE
T.12S.

S31 S32
T.13S. S6 S5
R.31E.



Ferguson Surveying
Engineering

P.O. BOX 519, 210 E. MAIN
MT. VERNON, OR 97865
PHONE (541) 932-4520
FAX (541) 932-4430
EMAIL DFSE@ORTELCO.NET

FD. ALUMINUM CAPPED
MONUMENT.
(859)

N89°44'07"E, 2673.37
N89°47'17"E, 2673.24
(S89°27'W, 2646.93)

S29 S28
S32 S33

N00°43'05"E, 5285.37
(NORTH, 5280.00)

N00°56'56"E
5310.75

N01°10'40"E, 5335.89
N01°14'13"E, 5335.70
(NORTH, 5280.00)

CALC. POSITION W1/16
SEE DETAIL 2 ABOVE

S89°43'31"E, 2651.65
(S89°43'31"E, 2651.90)
(EAST, 2640.00)

S89°43'57"E, 2651.65
(S89°43'57"E, 2651.89)
(EAST, 2640.00)

S32 S33
S5 S4

GRANT COUNTY MAP OF SURVEY #1697