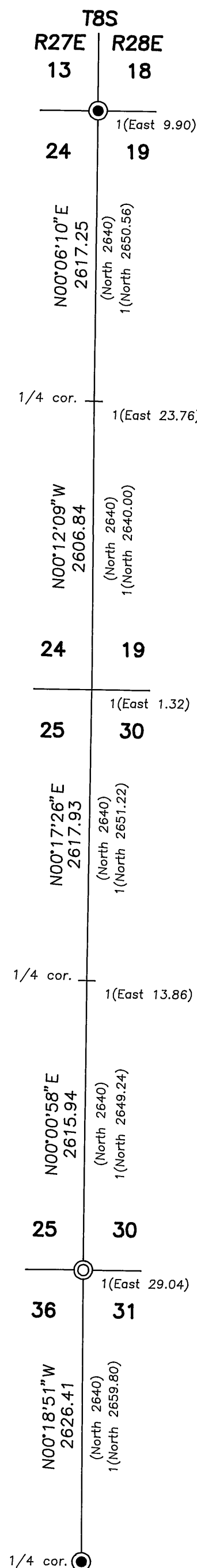




Scale 1"=1000'



RECEIVED AND  
FILED

MAY 2, 2003  
APPROVED BY COUNTY CLERK  
Robert D. B. [Signature]  
Attest: [Signature]

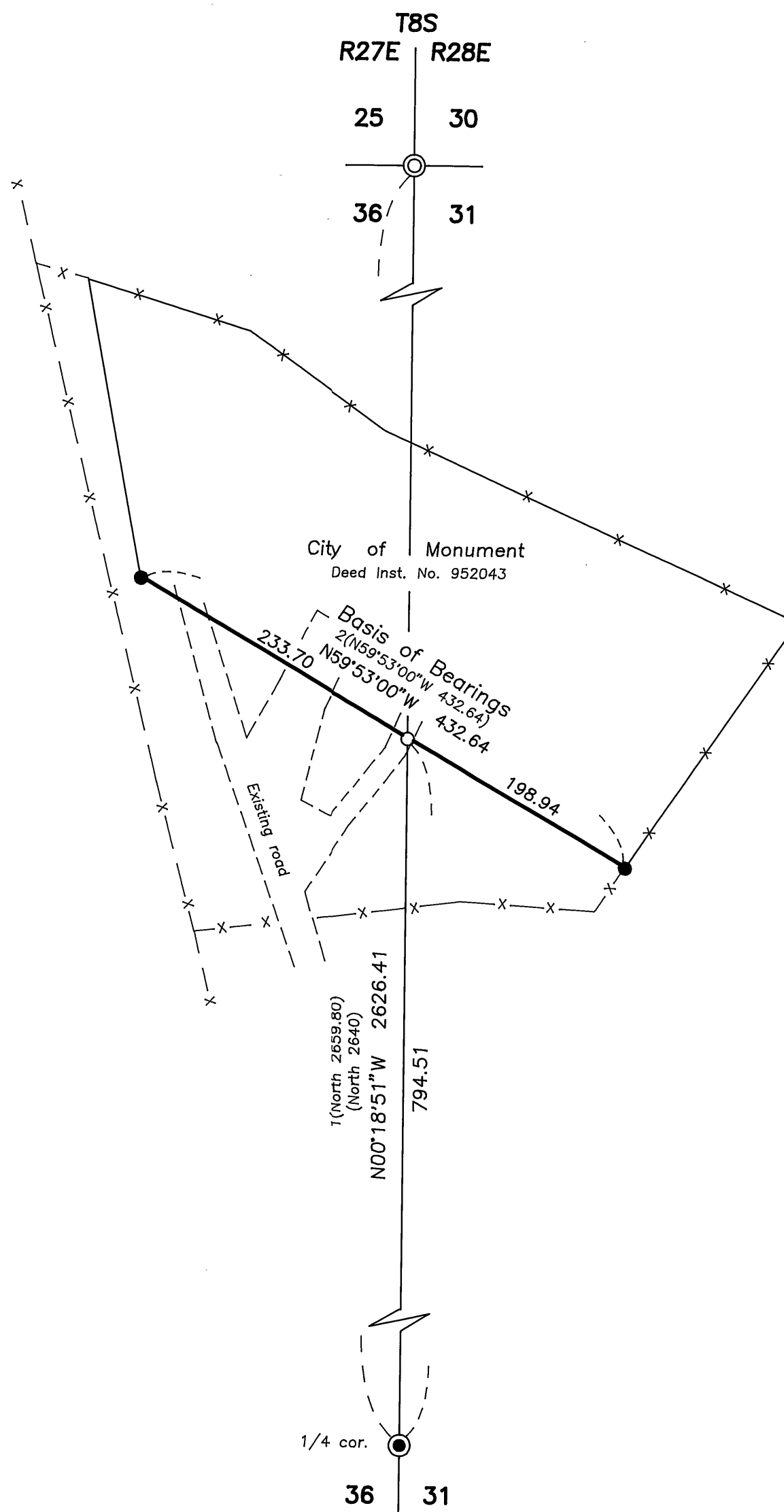
#### NARRATIVE

This survey was performed at the request of Jack Cavender. The purpose of this survey was to re-establish the NW corner of Section 31 and set a monument at the intersection of the section line and the south boundary of the City of Monument solid waste transfer site.

A search was made of the available records pertaining to this survey and for original monuments on the west line of Sections 19 and 30, T8S, R28E. The original survey along the west line of T8S, R28E, was performed by Aaron York, approved June 12, 1879. A re-tracement of this line was done by Henry Meldrum, approved November 23, 1881.

I found a Grant County Surveyor brass cap monument at the W1/4 corner of Section 31 and at the NW corner of Section 19 as shown. I did not find evidence of the original monuments at the SW corner, W1/4 corner or the NW corner of Section 30. Nor did I find evidence of the original monument at the W1/4 corner of Section 19. I used the re-tracement measurements and the irregular boundary adjustment method described in the 1973 BLM Manual of Surveying Instructions to proportion the NW corner of Section 31.

The boundary of the transfer site was monumented in August of 1989, see Survey No. 1080. I found the monuments on the south boundary of the transfer site and set a monument at the intersection with the west line of Section 31.



Scale 1"=100'

#### LEGEND

- Found 1 1/2" iron pipe with attached Grant County Surveyor brass cap.
- Found 5/8" iron pin with attached yellow plastic cap, see Survey No. 1080.
- Set 5/8"x30" iron pin with attached red plastic cap marked CORNERSTONE SURVEYING, INC.
- ⊙ Set 2 1/2" aluminum pipe with attached 3" alum. cap. See croner restoration records for details.
- X—X Fence Line
- ( ) GLO record bearing and distance, Arron York, 1878.
- 1( ) GLO record bearing and distance, Henry Meldrum, 1881.
- 2( ) Survey No. 1080 record bearing and distance.
- Found monument, see record map of survey number shown in box.

REGISTERED  
PROFESSIONAL  
LAND SURVEYOR

JACK L. WATSON  
2734

Renewal Date 6/30/2004



CORNERSTONE SURVEYING, Inc.

233 S. Canyon Blvd., John Day, Oregon 97845  
(541) 575-1813

MAP OF SURVEY  
SITUATED IN THE NE1/4 OF SECTION 36, T8S, R27E  
AND IN THE NW1/4 OF SECTION 31, T8S, R28E, W.M.

GRANT COUNTY, OREGON

SURVEYED FOR: Jack Cavender

SURVEYED BY: Jack Watson

Date: 04/15/2003

DRAWN BY: Jack Watson

MAP OF SURVEY ND. 1663